



**STONE MARTIN
BUILDERS**



Walden

Home Plan

Starting at \$480,199

SQ FT: 3,721

Beds: 5

Baths: 3.5

Garage: 2 Standard



Elevation E



Elevation F

ABOUT THIS PLAN

Methodical design, the "Walden" plan is unique in every way and offers different concepts than most other plans. Entertain in style where the elbow room is endless with an open feeling and limitless ranges. Dreamy primary suite makes arranging furniture a snap with massive wall space and soaring ceilings. The primary closet is larger than any bedroom in other plans and will take care of storing all necessities. Splendid kitchen is almost mesmerizing at first glance with its state of the art layout featuring custom angled granite island and stylish plumbing and lighting packages. Position the high capacity washer/dryer, as well as all cleaning gadgets in the oversized laundry room that allows a growing family another option for easy living. Loft area off the open hallway on the second floor fulfills the needs of a large family while allowing a place for the kids to hang out or provides a media/craft/home schooling room. Four spaciouly appealing bedrooms also situated on this floor complete the unbelievable design that is aimed at accommodating all needs in a family dwelling.

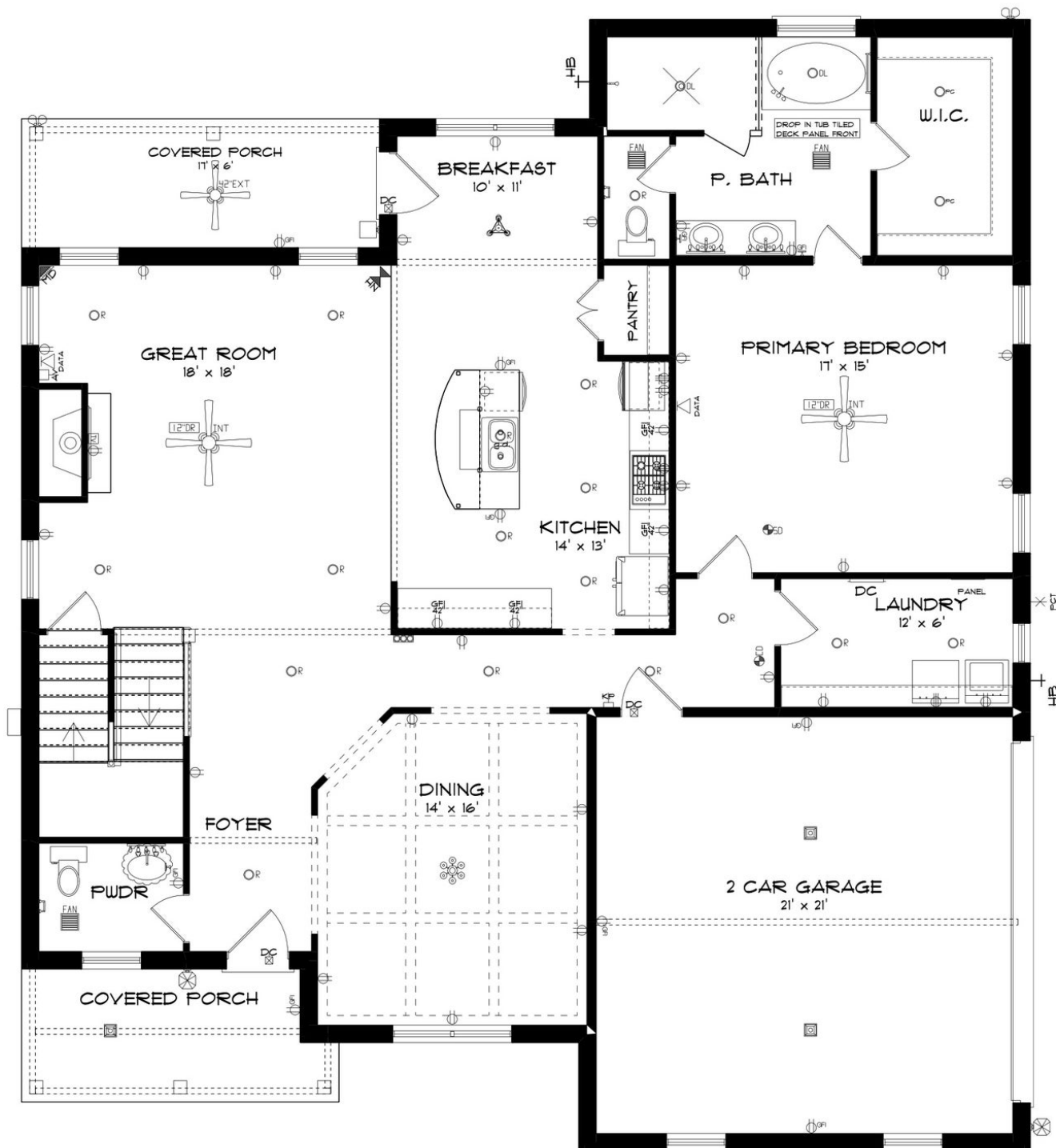
...Read More Online

Prices, plans, dimensions, features, specifications, materials, and availability of homes or communities are subject to change without notice or obligation. Illustrations are artists depictions only and may differ from completed improvements. All prices subject to change without notice. Please contact your sales associate before writing an offer.



**STONE MARTIN
BUILDERS**

FIRST FLOOR



Prices, plans, dimensions, features, specifications, materials, and availability of homes or communities are subject to change without notice or obligation. Illustrations are artists depictions only and may differ from completed improvements. All prices subject to change without notice. Please contact your sales associate before writing an offer.



This floor plan illustrates a 5-bedroom residence with a loft, multiple bathrooms, and a central hallway. The layout includes the following rooms and features:

- LOFT:** 14' x 29', featuring a central fan and a window.
- BEDROOM # 2:** 12' x 14', featuring a central fan and a window.
- BEDROOM # 3:** 11' x 15', featuring a central fan and a window.
- BEDROOM # 4:** 12' x 21', featuring a central fan and a window.
- BEDROOM # 5:** 14' x 20', featuring a central fan and a window.
- BATH:** Located between Bedroom #2 and Bedroom #3, featuring a toilet, sink, and fan.
- BATH:** Located between Bedroom #4 and Bedroom #5, featuring a toilet, sink, and fan.
- W.I.C. (Walk-In Closet):** Multiple locations, including one between Bedroom #2 and Bedroom #3, and another between Bedroom #4 and Bedroom #5.
- CLOSET:** Located between Bedroom #2 and Bedroom #3.
- 25' x 54' ATTIC STAIR:** Centrally located, with an "UP" arrow indicating the direction to the loft.
- HALLWAY:** A central hallway with a dashed line and arrows indicating the flow of traffic.
- Other Features:** The plan includes various doors, windows, and a central fan in each bedroom.

Prices, plans, dimensions, features, specifications, materials, and availability of homes or communities are subject to change without notice or obligation. Illustrations are artists depictions only and may differ from completed improvements. All prices subject to change without notice. Please contact your sales associate before writing an offer.



STONE MARTIN
BUILDERS

PLAN GALLERY