



**STONE MARTIN  
BUILDERS**



## **Walden**

### **Home Plan**

Starting at \$481,799

**SQ FT:** 3,721

**Beds:** 5

**Baths:** 3.5

**Garage:** 2 Standard



Elevation F

## **ABOUT THIS PLAN**

Methodical design, the "Walden" plan is unique in every way and offers different concepts than most other plans. Entertain in style where the elbow room is endless with an open feeling and limitless ranges. Dreamy primary suite makes arranging furniture a snap with massive wall space and soaring ceilings. The primary closet is larger than any bedroom in other plans and will take care of storing all necessities. Splendid kitchen is almost mesmerizing at first glance with its state of the art layout featuring custom angled granite island and stylish plumbing and lighting packages. Position the high capacity washer/dryer, as well as all cleaning gadgets in the oversized laundry room that allows a growing family another option for easy living. Loft area off the open hallway on the second floor fulfills the needs of a large family while allowing a place for the kids to hang out or provides a media/craft/home schooling room. Four spaciouly appealing bedrooms also situated on this floor complete the unbelievable design that is aimed at accommodating all needs in a family dwelling.

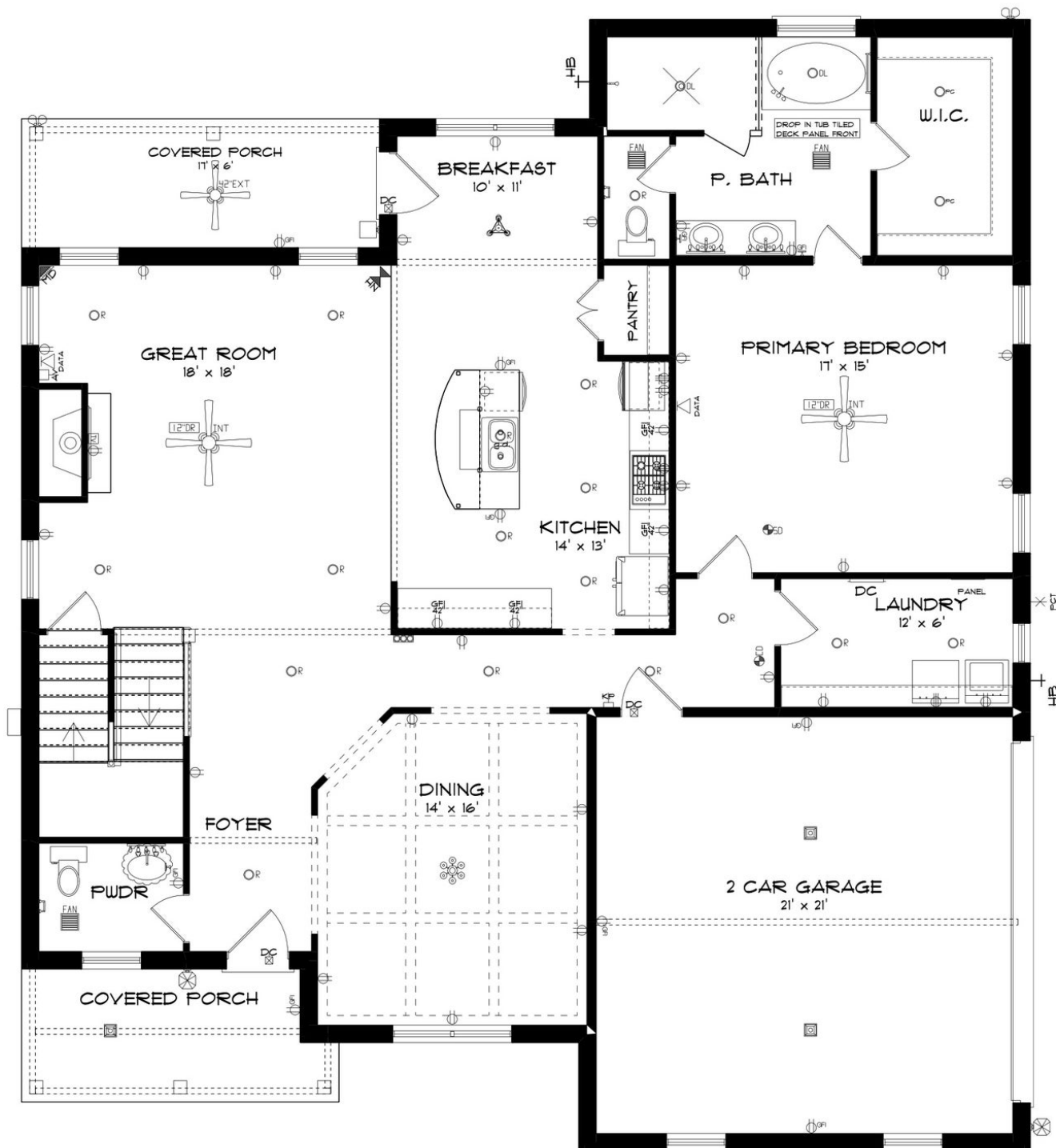
### **...Read More Online**

Prices, plans, dimensions, features, specifications, materials, and availability of homes or communities are subject to change without notice or obligation. Illustrations are artists depictions only and may differ from completed improvements. All prices subject to change without notice. Please contact your sales associate before writing an offer.



**STONE MARTIN  
BUILDERS**

## FIRST FLOOR



Prices, plans, dimensions, features, specifications, materials, and availability of homes or communities are subject to change without notice or obligation. Illustrations are artists depictions only and may differ from completed improvements. All prices subject to change without notice. Please contact your sales associate before writing an offer.



This is a detailed floor plan for a 5-bedroom house. The layout includes a central hallway with a staircase leading up to a 25' x 54' attic. The rooms are as follows:

- LOFT:** 14' x 29', located in the top left corner.
- BEDROOM # 1:** 12' x 14', located in the top center.
- BEDROOM # 2:** 11' x 15', located in the top right corner.
- BEDROOM # 3:** 14' x 20', located in the bottom center.
- BEDROOM # 4:** 12' x 21', located in the bottom right corner.
- BEDROOM # 5:** 12' x 14', located in the bottom left corner.

The plan also features several bathrooms, including a full bath with a tub, toilet, and sink, and several half-baths (W.I.C.). There are also closets, a linen closet, and a central staircase leading up to a 25' x 54' attic. The plan includes various architectural details such as doors, windows, and furniture placement.

Prices, plans, dimensions, features, specifications, materials, and availability of homes or communities are subject to change without notice or obligation. Illustrations are artists depictions only and may differ from completed improvements. All prices subject to change without notice. Please contact your sales associate before writing an offer.



**STONE MARTIN**  
**BUILDERS**

## PLAN GALLERY