



**STONE MARTIN  
BUILDERS**



**149 Whitner Drive  
Hazel Green, AL 35750  
Townsend Farm**

**\$289,900**

**Plan: Thrive Stanton**

**SQ FT: 2,023**

**Beds: 4**

**Baths: 2.5**

**Garage: 2**

## ABOUT THIS HOUSE

The "Stanton" floorplan is a mix of elegance and comfort, warm and welcoming as soon as you step through the front door. The foyer entrance splits to the left with a staircase leading up to the 4 spacious and private bedrooms, or straight forward, passing the entrance hall powder room, into the open great room, dining, and kitchen area. This beautiful and expansive kitchen is complete with brand new, stainless steel appliances, and a large island which provides plenty of room for friends and family to gather. From the kitchen area, you can access the large 2 car garage that is situated on the front of the house, allowing you to handle getting groceries for the household into your kitchen with ease. Upstairs, you will find 3 sizeable bedrooms, with the laundry room conveniently placed at the end of the hall. Across from the guest rooms, sits the large primary suite with an enormous walk-in closet. The connecting primary bath includes a double vanity sink and a garden tub/shower combo. The smart design of the Stanton plan makes for a great use of space, leaving room for comfortable living and memories to be created.

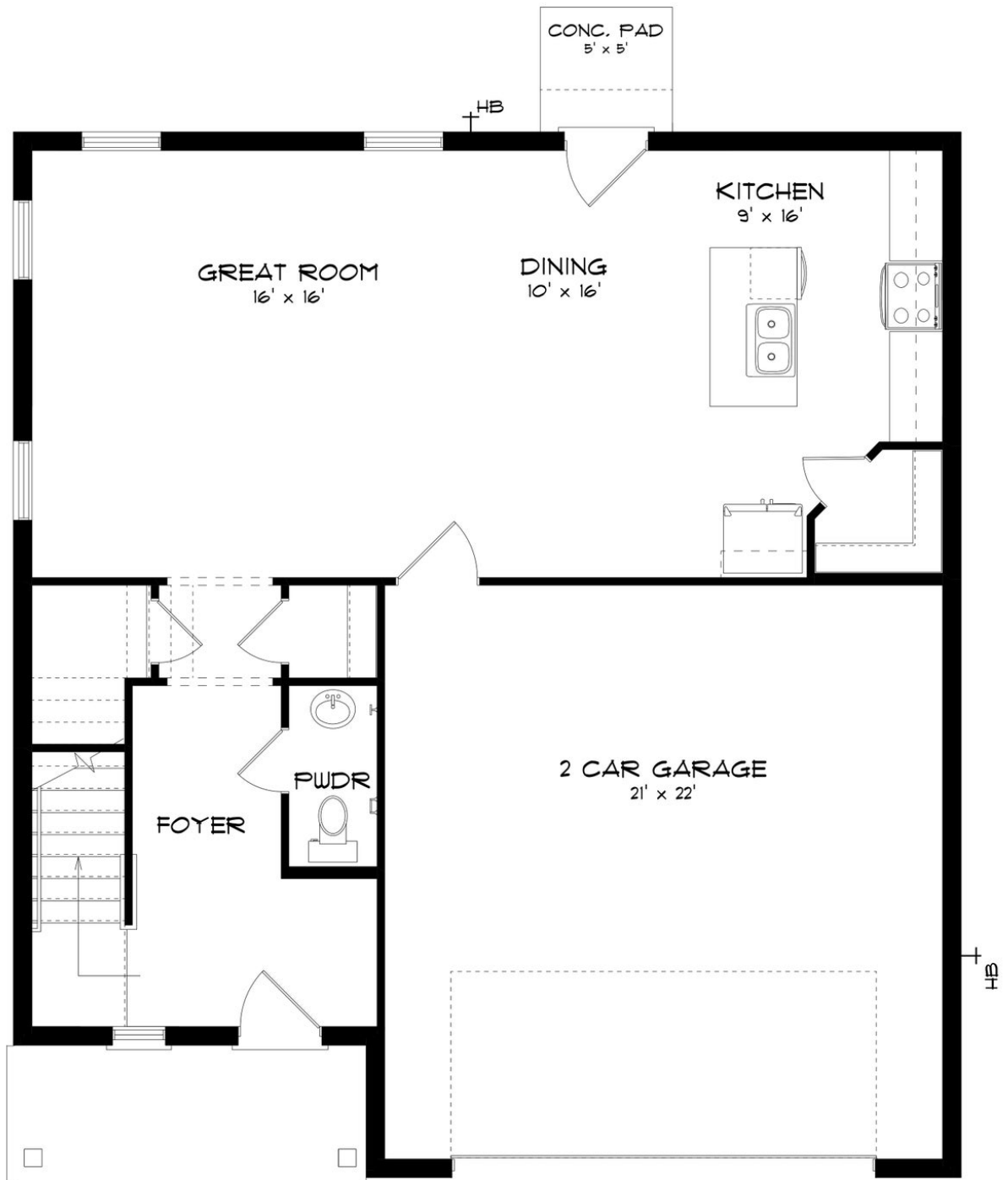
## ABOUT TOWNSEND FARM

Nestled in the heart of Hazel Green, Townsend Farm welcomes you to a unique blend of small-town charm and city convenience. Conveniently situated off Highway 231/431, this community offers the perfect balance of tranquility and accessibility. Enjoy the best of both worlds with Townsend Farm. Experience the warmth of a small-town atmosphere while being just moments away from shops, restaurants, and the bustling medical district. It's the ideal location for those seeking a peaceful retreat without sacrificing city conveniences. Embrace the leisurely pace of life at Townsend Farm. Surround yourself with quiet surroundings, indulge in a round of golf at the nearby links, or plan memorable family outings to the renowned Tate Farms. Choose from our well-designed ranch plans, tailored to provide comfort and solace after a long day. Whether you're starting a family or seeking a tranquil haven, Townsend Farm is the perfect community for your new home. Ready to experience the Stone Martin Builders difference? Schedule a visit to Townsend Farm and meet with our knowledgeable Sales Professionals. Explore available homes, envision your future, and embark on the journey to find your dream home in Hazel Green, AL.

Prices, plans, dimensions, features, specifications, materials, and availability of homes or communities are subject to change without notice or obligation. Illustrations are artists depictions only and may differ from completed improvements. All prices subject to change without notice. Please contact your sales associate before writing an offer.



# FIRST FLOOR (A)





## SECOND FLOOR (A)

