



**STONE MARTIN
BUILDERS**



**228 Haystack Drive
Huntsville, AL 35757
Clift Farm**

\$549,900

Plan: Magnolia

SQ FT: 2,670

Beds: 4

Baths: 3.5

Garage: 2

ABOUT THIS HOUSE

The Magnolia plan provides a seamless indoor-outdoor living space. This plan was designed as a porch-lover's paradise, with two porches that are easily accessible from the kitchen and great room. This 4 bedroom 3.5 bath design offers space for the whole family to enjoy. The serene sitting area in the primary bedroom allows a quiet escape from the stresses of everyday life. The second floor features room for all your guests. With 3 bedrooms and a bonus room, the Magnolia provides ample space for the whole family. The open kitchen concept allows for constant communication from the kitchen, dining area, and great room. The Magnolia features spaces the whole family will love!

ABOUT CLIFT FARM

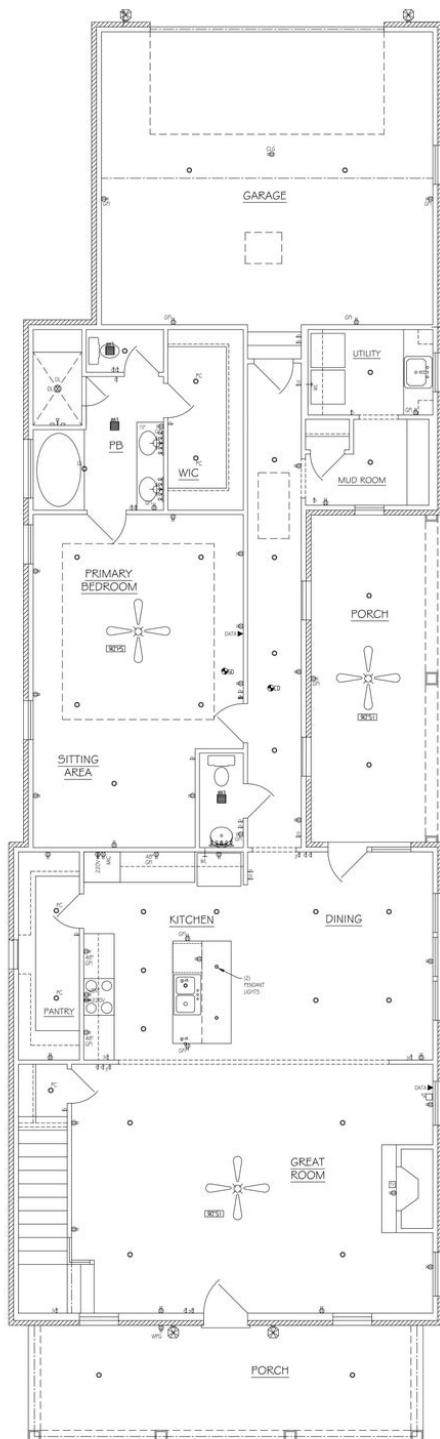
Stone Martin Builders wants to help you Spring into Savings on a new home! Ask a Sales Professional about our special incentives and new home savings! Welcome to Clift Farm, a captivating blend of southern charm and modern living rooted in the century-old Clift family farm. This mixed-use haven offers new construction homes with high-end finishes, each meticulously crafted for unique lifestyles. Immerse yourself in the inviting ambiance of southern style at Clift Farm, where expansive floorplans and meticulous design details redefine the essence of home. Crafted by Stone Martin Builders, our home designs feature gourmet kitchens as functional hubs and stylish focal points—a seamless fusion of form and function. Envision a home that mirrors your style while embracing cutting-edge technology. Experience integrated smart home connectivity, enhancing daily living with modern conveniences. Enjoy the proximity to Downtown Huntsville, ensuring cultural and entertainment delights are within easy reach. Clift Farm is designed for outdoor living, boasting nature trails winding through orchards—a peaceful retreat into the beauty of nature. The clubhouse, with its gym and pool, becomes a central spot for community fun and relaxation. The retail village, anchored by Publix, brings easy convenience with restaurants, event spaces, and workplaces, adding to the lively vibe of North Alabama's sought-after community. Ready to experience the Stone Martin Builders difference? Schedule a vis...

Prices, plans, dimensions, features, specifications, materials, and availability of homes or communities are subject to change without notice or obligation. Illustrations are artists depictions only and may differ from completed improvements. All prices subject to change without notice. Please contact your sales associate before writing an offer.



**STONE MARTIN
BUILDERS**

FIRST FLOOR

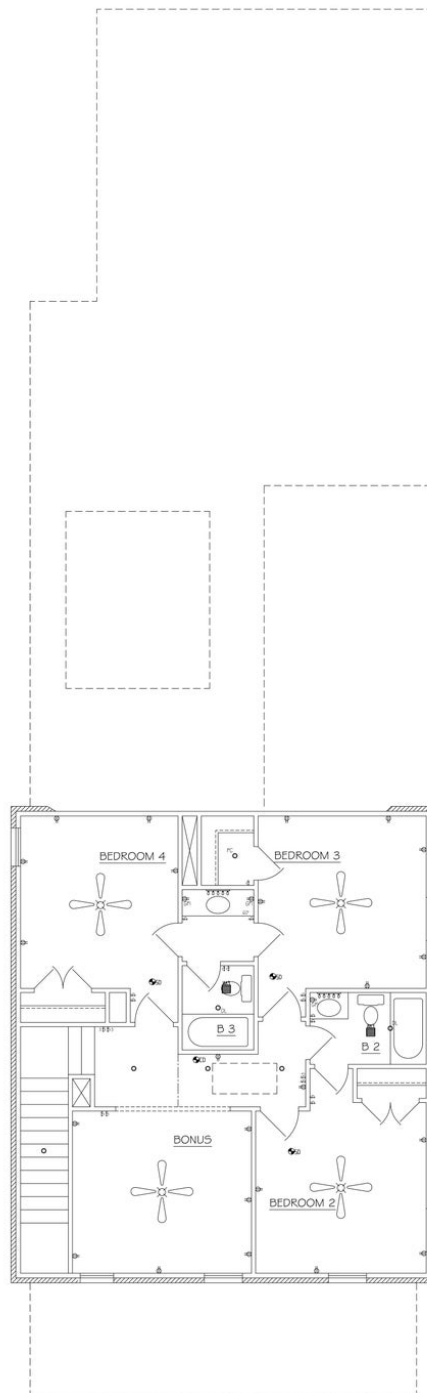


Prices, plans, dimensions, features, specifications, materials, and availability of homes or communities are subject to change without notice or obligation. Illustrations are artists depictions only and may differ from completed improvements. All prices subject to change without notice. Please contact your sales associate before writing an offer.



STONE MARTIN
BUILDERS

SECOND FLOOR



Prices, plans, dimensions, features, specifications, materials, and availability of homes or communities are subject to change without notice or obligation. Illustrations are artists depictions only and may differ from completed improvements. All prices subject to change without notice. Please contact your sales associate before writing an offer.