



**1290 Charleston Drive
Prattville, AL 36066
Glennbrooke**

\$455,629

Plan: Acadia II

SQ FT: 2,958

Beds: 4

Baths: 4.0

Garage: 2

ABOUT THIS HOUSE

The "Acadia II" floorplan is a spacious 4 bedroom and 4 bathroom plan, designed to maximize your living space. The distinguished foyer leads into a sectioned dining room that boasts coffered ceilings. This space is perfect for family dinners, game nights, or entertaining. The foyer also leads into an open kitchen, breakfast area and expansive great room. The kitchen includes a large granite island, granite countertops, stainless steel appliances and a convenient pantry. The primary retreat is equipped with double granite vanities, soaking tub, separate tiled shower and a spacious walk-in closet. The first floor is complete with 2 other bedrooms which share a jack and jill bathroom and an additional bedroom and bathroom. The second floor features a bonus room and bathroom, which can adapt to however you choose to use it!

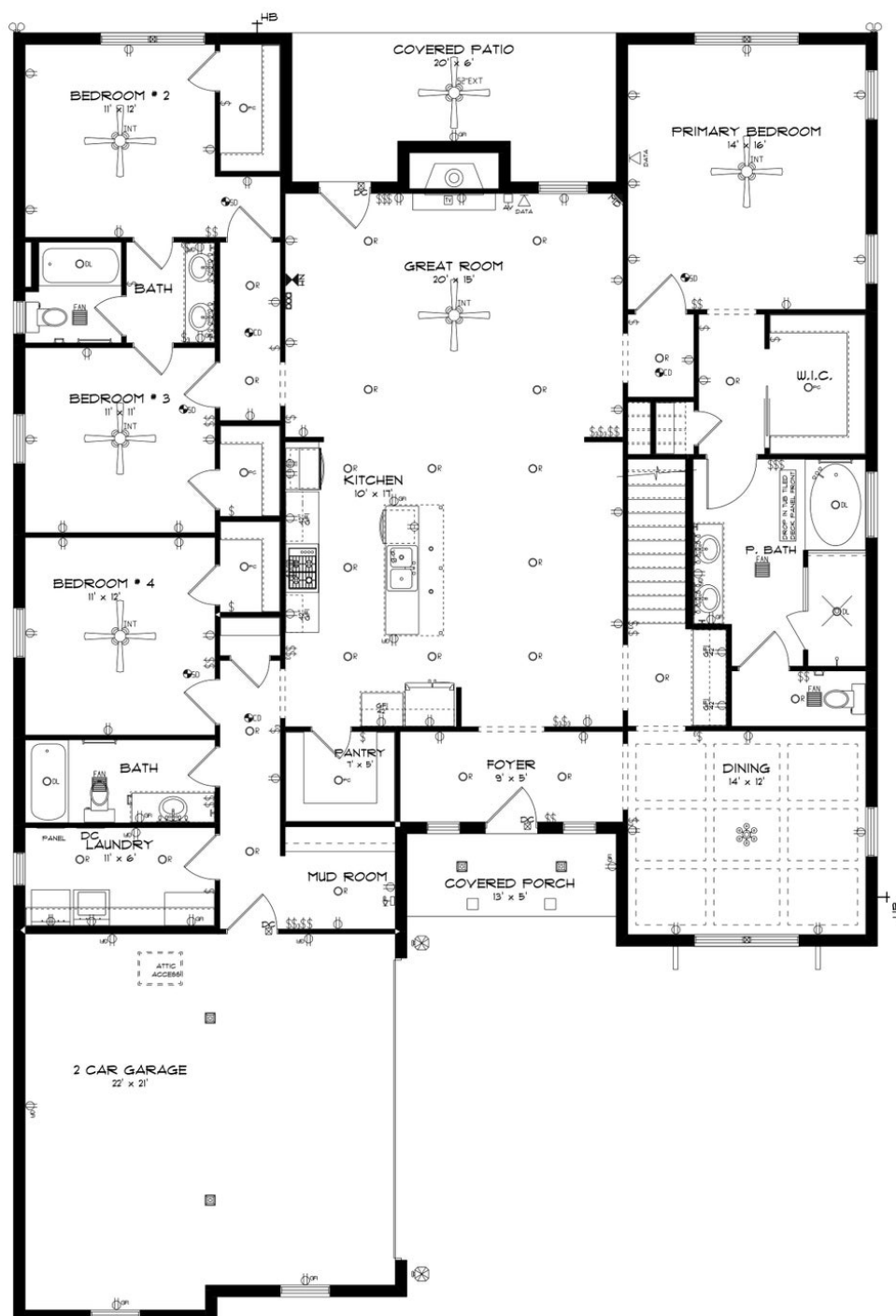
ABOUT GLENNBROOKE

Stone Martin Builders wants to help you Spring into Savings on a new home! Ask a Sales Professional about our special incentives and new home savings! Welcome to Glennbrooke, where modern living meets Southern charm in Prattville, Alabama. Nestled in a master-planned community, Glennbrooke offers new construction homes designed for the way you live. Conveniently located near shopping, dining, Gunter and Maxwell Air Force Bases, and downtown Montgomery, Glennbrooke provides easy access to all the essentials of modern living. Discover spacious floorplans with thoughtful design details, including gourmet kitchens and high-quality construction by Stone Martin Builders. Each home is crafted with energy efficiency in mind, ensuring comfort and cost savings for years to come. Experience the future with integrated smart home connectivity, enhancing your daily living experience with modern conveniences. From climate control to advanced security features, these technologies elevate your lifestyle while providing peace of mind. Cool off on hot summer days at the community pool, laugh and play at the playground, or enjoy family fun at the splash pad. Immerse yourself in the welcoming community of Glennbrooke, where neighbors become friends and the landscaping is meticulously maintained. With low yearly dues and a wealth of amenities, Glennbrooke offers a lifestyle that's hard to resist. Ready to experience the Stone Martin difference? Schedule a visit to Glennbrooke and meet with our kno...



**STONE MARTIN
BUILDERS**

FIRST FLOOR



Prices, plans, dimensions, features, specifications, materials, and availability of homes or communities are subject to change without notice or obligation. Illustrations are artists depictions only and may differ from completed improvements. All prices subject to change without notice. Please contact your sales associate before writing an offer.



Floor plan of a Bonus Room and Bath. The Bonus Room is 11' x 15' and features a ceiling fan, a window with a flower box, and a door labeled 'INT'. The Bath includes a bathtub with a drain (DL), a toilet, a sink, and a window with a flower box. The plan also shows a closet with a door labeled 'CD' and a door labeled 'OR'.

Prices, plans, dimensions, features, specifications, materials, and availability of homes or communities are subject to change without notice or obligation. Illustrations are artists depictions only and may differ from completed improvements. All prices subject to change without notice. Please contact your sales associate before writing an offer.