



**STONE MARTIN
BUILDERS**



Portsmouth

Home Plan

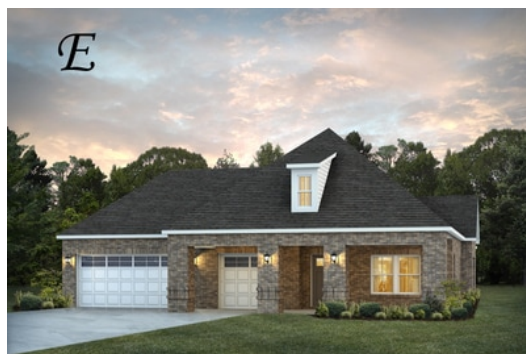
Starting at \$487,499

SQ FT: 2,793

Beds: 4

Baths: 3.0

Garage: 3 Standard



ELEVATION E



ELEVATION F

ABOUT THIS PLAN

Welcome to the "Portsmouth" plan - a true gem designed for harmonious living. The enchanting grand foyer entrance leads to a stunning kitchen with a large island and luxurious granite countertops, and it opens into the inviting dining space to create cherished memories.

The extraordinary great room with vaulted ceilings and a captivating fireplace sets a refined and welcoming ambiance. Step out to the rear covered patio, a peaceful retreat offering ample shade for outdoor relaxation. Tailor-made for multi-generational families, this 4-bedroom and 3-bath layout ensures individual space and togetherness. The primary suite, strategically located at the rear, features a detailed ceiling, serene soaking tub, separate shower, two elegant vanities, and a generous walk-in closet.

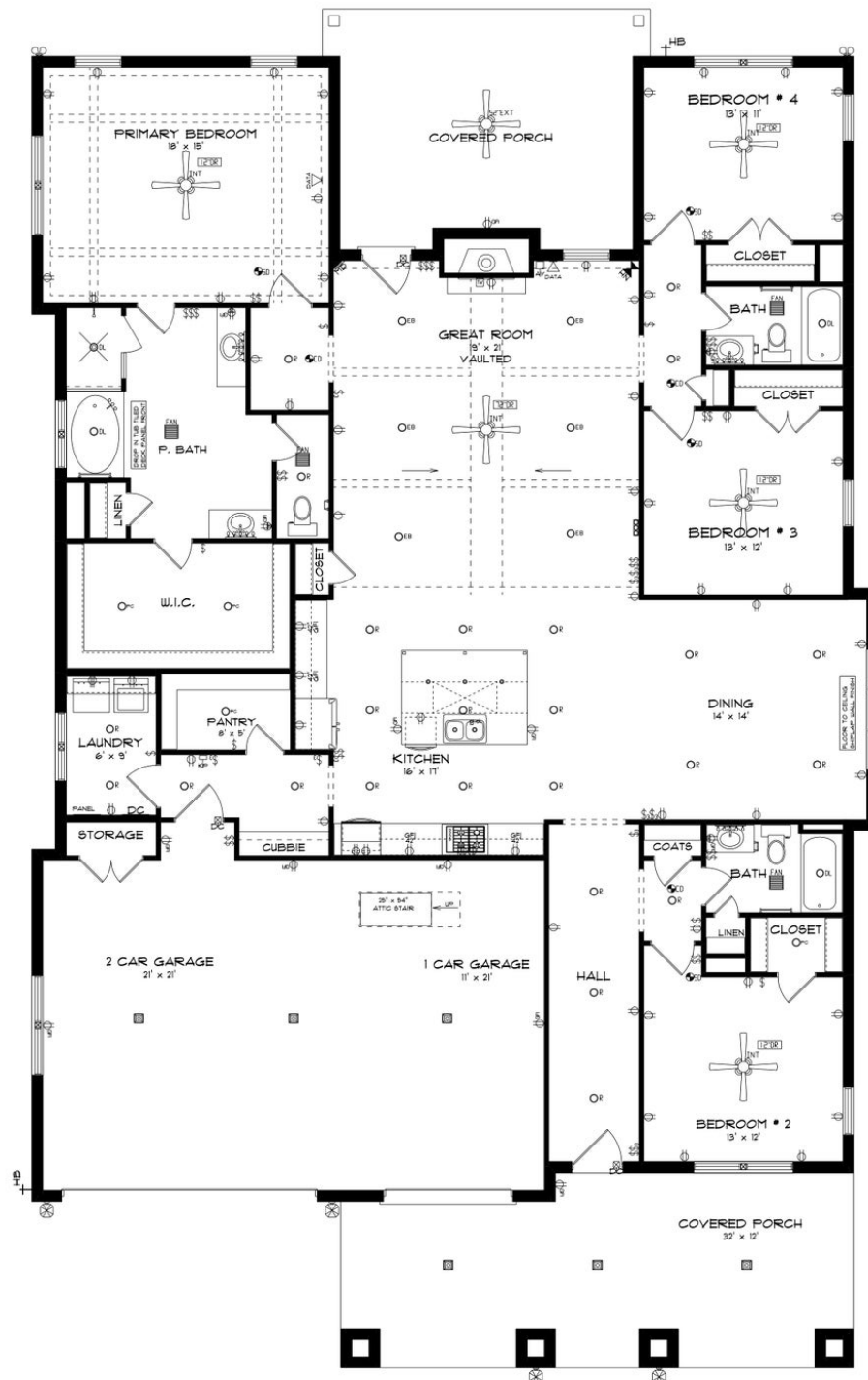
Completing this masterpiece is a 3-car garage with ample storage and hobby space. Elevate your living experience with a home designed to embrace family dynamics and create cherished moments. Welcome to your

[...Read More Online](#)

Prices, plans, dimensions, features, specifications, materials, and availability of homes or communities are subject to change without notice or obligation. Illustrations are artists depictions only and may differ from completed improvements. All prices subject to change without notice. Please contact your sales associate before writing an offer.



**STONE MARTIN
BUILDERS**



Prices, plans, dimensions, features, specifications, materials, and availability of homes or communities are subject to change without notice or obligation. Illustrations are artists depictions only and may differ from completed improvements. All prices subject to change without notice. Please contact your sales associate before writing an offer.



STONE MARTIN
BUILDERS

PLAN GALLERY