



**STONE MARTIN
BUILDERS**



**16618 Hampton Place
Athens, AL 35611**

Swan Woods

Plan: St James II

SQ FT: 3,135

Beds: 4

Baths: 4.0

Garage: 3

ABOUT THIS HOUSE

Introducing the St. James II floorplan - a heavenly abode designed for modern living. Step into the grand foyer leading to a stunning kitchen with granite countertops and an island, seamlessly connecting to the dining area. The expansive great room features hardwood floors, a cozy fireplace, and vaulted ceilings, perfect for gatherings. Retreat to the spacious covered back patio for relaxation. With a 3-car garage providing ample storage, this 4-bed, 4-bath plan offers versatility and charm, ideal for multi-generational living. Discover the epitome of comfort and luxury in the St. James II.

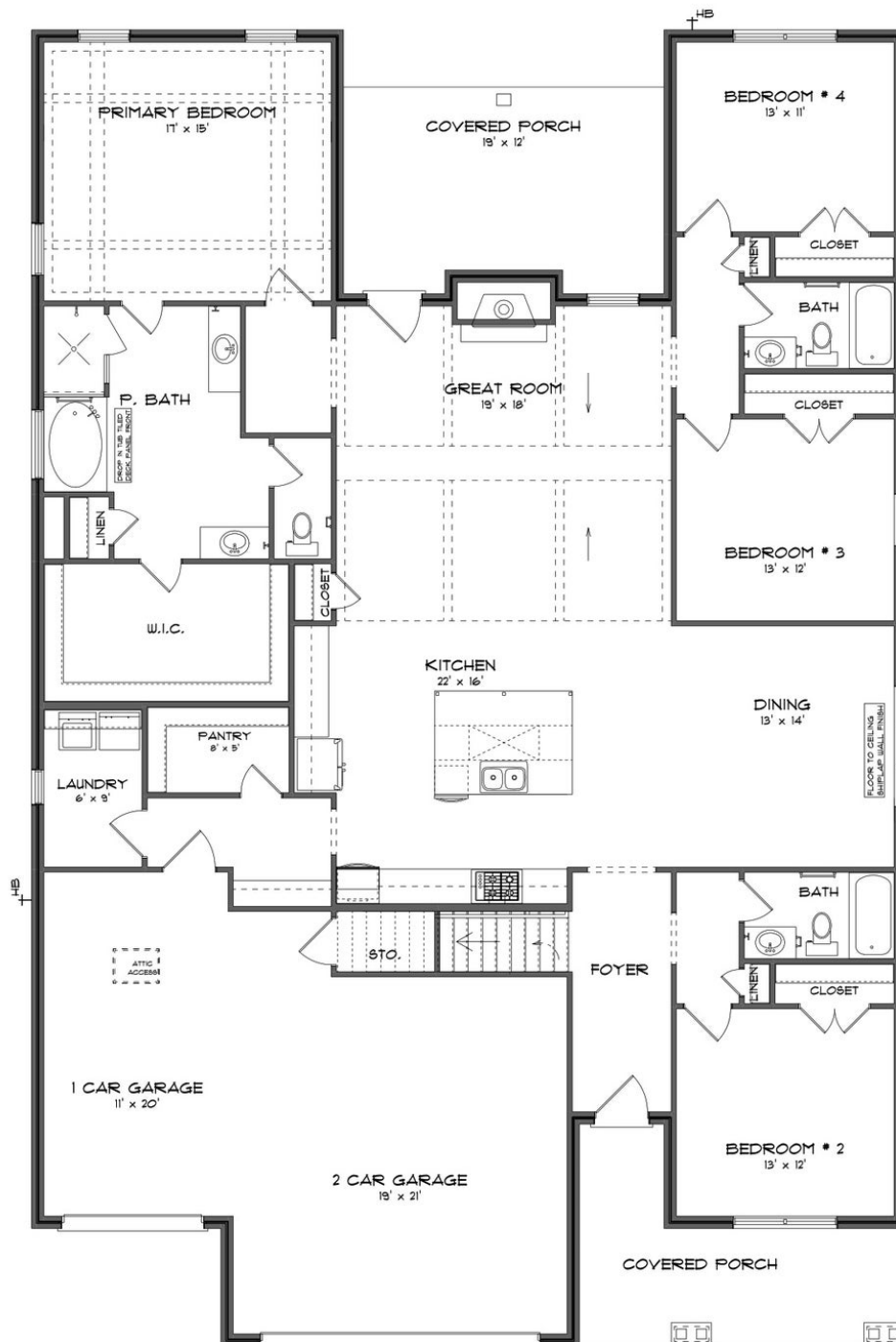
ABOUT SWAN WOODS

Stone Martin Builders wants to help you get into the game of homeownership! Ask a Sales Professional about our special incentives and new home savings! Welcome to Swan Woods, a captivating blend of southern charm and modern convenience in Athens, AL. Nestled off E Forrest St between Hwy 31 & Interstate 65, north of Hwy 72, this vibrant new home community by Stone Martin Builders offers convenient access to major highways and nearby amenities, ensuring an effortless lifestyle. Enjoy convenient access to retail and grocery options: Publix, Walgreens, Lowe's Home Improvement, and Walmart are all within reach. For those pining after a shopper's paradise, Huntsville's Bridge Street Town Center is approximately a 30-minute drive away. Experience the great outdoors at nearby parks and recreation areas such as Athens Sportsplex, Swan Creek Park, and Big Spring Park. Historic Downtown Athens offers an array of nightlife, dining, and cultural attractions through Athens Main Street. Discover spacious floorplans and thoughtful design details crafted to enhance your lifestyle. Gourmet kitchens, integrated smart home connectivity, and high-quality construction are hallmarks of Stone Martin Builders. Ready to experience the Stone Martin Builders difference? Schedule a visit to Swan Woods and consult with our knowledgeable Sales Professionals. Explore available homes, envision your future, and embark on the journey to find your ideal home in Limestone County, AL. Welcome home to Swan Woods...

Prices, plans, dimensions, features, specifications, materials, and availability of homes or communities are subject to change without notice or obligation. Illustrations are artists depictions only and may differ from completed improvements. All prices subject to change without notice. Please contact your sales associate before writing an offer.



FIRST FLOOR (F)



Prices, plans, dimensions, features, specifications, materials, and availability of homes or communities are subject to change without notice or obligation. Illustrations are artists depictions only and may differ from completed improvements. All prices subject to change without notice. Please contact your sales associate before writing an offer.



SECOND FLOOR (F)

