



**STONE MARTIN
BUILDERS**



**16646 Hamilton Place
Athens, AL 35611**

Swan Woods

Plan: Alexandria

SQ FT: 2,705

Beds: 4

Baths: 3.0

Garage: 2

ABOUT THIS HOUSE

The "Alexandria" is sure to provide a delightful living experience with its one-story design and easy access and flow from room to room. This Ranch-style home is sure to please! The appealing entry foyer is sophisticated yet open and joins the formal dining room and offers an additional room useful as a study or living room. The open vaulted great room and kitchen with large center granite island is made for entertaining. The unique primary suite offers a large bedroom area, functional primary bath with split granite vanities, garden/soaking tub and tiled shower with glass door and his and hers walk in closets. The additional three bedrooms provide plenty of closet space and two additional bathrooms. This highly desirable plan is perfect for multiple lifestyles.

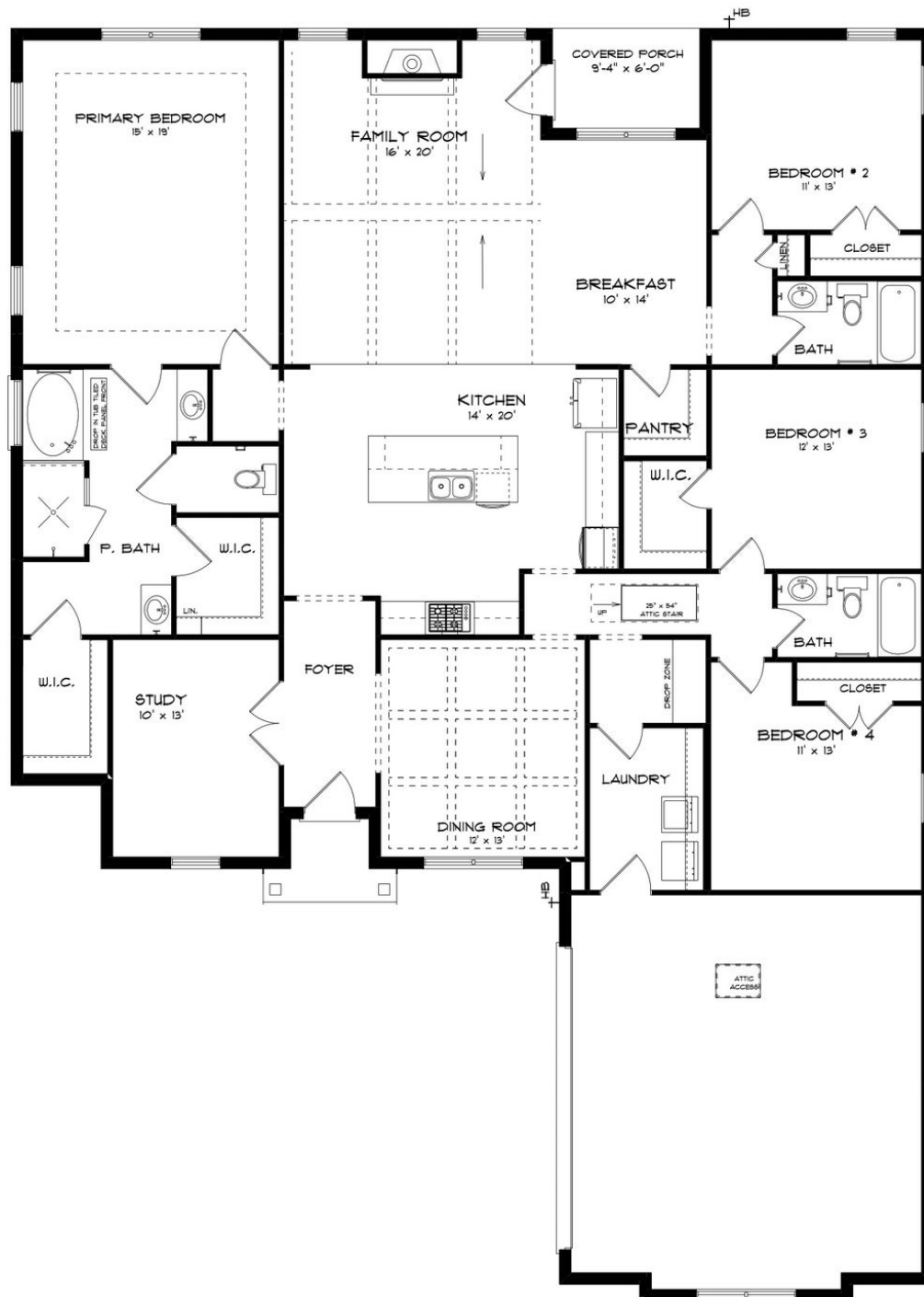
ABOUT SWAN WOODS

Stone Martin Builders wants to help you Splash into Savings on a new home! Ask a Sales Professional about our special incentives and new home savings! Welcome to Swan Woods, a captivating blend of southern charm and modern convenience in Athens, AL. Nestled off E Forrest St between Hwy 31 & Interstate 65, north of Hwy 72, this vibrant new home community by Stone Martin Builders offers convenient access to major highways and nearby amenities, ensuring an effortless lifestyle. Enjoy convenient access to retail and grocery options: Publix, Walgreens, Lowe's Home Improvement, and Walmart are all within reach. For those pining after a shopper's paradise, Huntsville's Bridge Street Town Center is approximately a 30-minute drive away. Experience the great outdoors at nearby parks and recreation areas such as Athens Sportsplex, Swan Creek Park, and Big Spring Park. Historic Downtown Athens offers an array of nightlife, dining, and cultural attractions through Athens Main Street. Discover spacious floorplans and thoughtful design details crafted to enhance your lifestyle. Gourmet kitchens, integrated smart home connectivity, and high-quality construction are hallmarks of Stone Martin Builders. Ready to experience the Stone Martin Builders difference? Schedule a visit to Swan Woods and consult with our knowledgeable Sales Professionals. Explore available homes, envision your future, and embark on the journey to find your ideal home in Limestone County, AL. Welcome home to Swan Woods—...

Prices, plans, dimensions, features, specifications, materials, and availability of homes or communities are subject to change without notice or obligation. Illustrations are artists depictions only and may differ from completed improvements. All prices subject to change without notice. Please contact your sales associate before writing an offer.



ELEVATION J



Prices, plans, dimensions, features, specifications, materials, and availability of homes or communities are subject to change without notice or obligation. Illustrations are artists depictions only and may differ from completed improvements. All prices subject to change without notice. Please contact your sales associate before writing an offer.