



**STONE MARTIN  
BUILDERS**

Contact Our Sales Associate

Cathy Fincher

334.246.0007 |

[donahueridge@stonemartinbuilders.com](mailto:donahueridge@stonemartinbuilders.com)



**1886 Waterfall Road**

**Auburn, AL 36830**

**Donahue Ridge**

**\$366,192**

**Plan:Deerfield**

**SQ FT:3,259**

**Beds:5**

**Baths:4.0**

**Garage:2**

## ABOUT THIS HOUSE

The coordinated and spacious Deerfield floorplan is a perfect option for a growing family, featuring large living areas and spacious bedrooms for privacy. Enter through the foyer into the stunning great room featuring elegant hardwood flooring and an attractive fireplace. The first floor also houses a graceful dining room well-suited for formal gatherings. This open floor plan flows from the great room into the breakfast room and spacious gourmet kitchen complete with a great island, granite countertops, and walk in pantry. A large bedroom connected to a full bath completes the first floor. The second floor truly is a private retreat from the large first floor living areas, featuring 3 bedrooms with large walk in closets, two full bathrooms and a magnificent master suite. The master bedroom is open and airy with 9 foot tray ceilings and a gorgeous master bathroom with separate shower and garden tub, plenty of storage space, and a double vanity. An enormous walk in closet completes this impeccable spa like sanctuary. Finishing the spacious upstairs is an appropriately placed laundry room for easy clean up and accessibility. The flowing balance and large size of the Deerfield is an absolute must for a growing family's comfort and needs.

...Read More Online

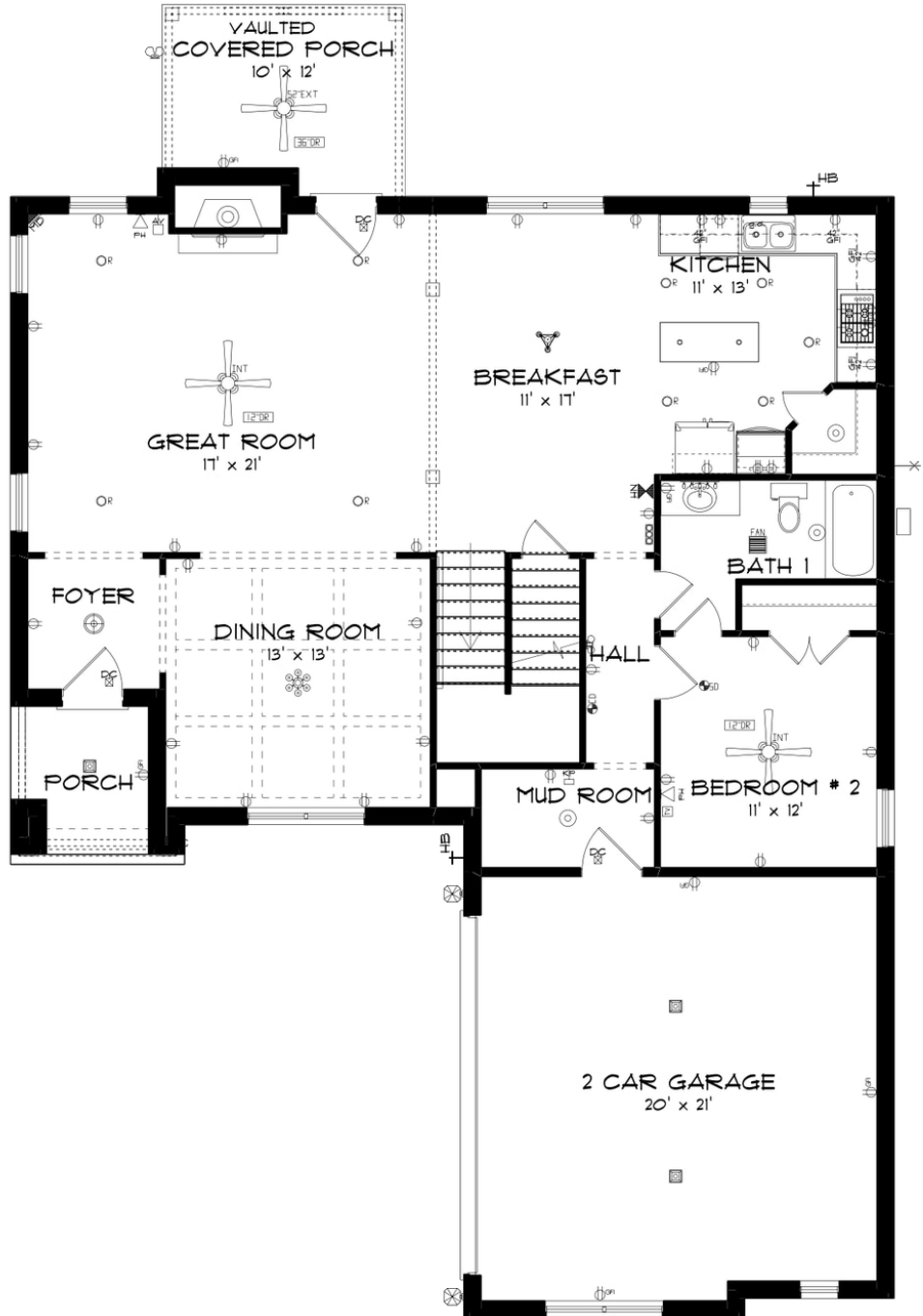
## ABOUT DONAHUE RIDGE

Located on the northern side of Auburn, Donahue Ridge is the perfect balance between serene living with convenient community access. It is situated on spacious lots surrounded with lush greenery. With close proximity to Highway 280, traveling or commuting is never a hassle. Donahue Ridge offers easy access to downtown Auburn, without all of the traffic and noise. With homes ranging in price and square foot, it is perfect community for any stage of life!

...Read More Online



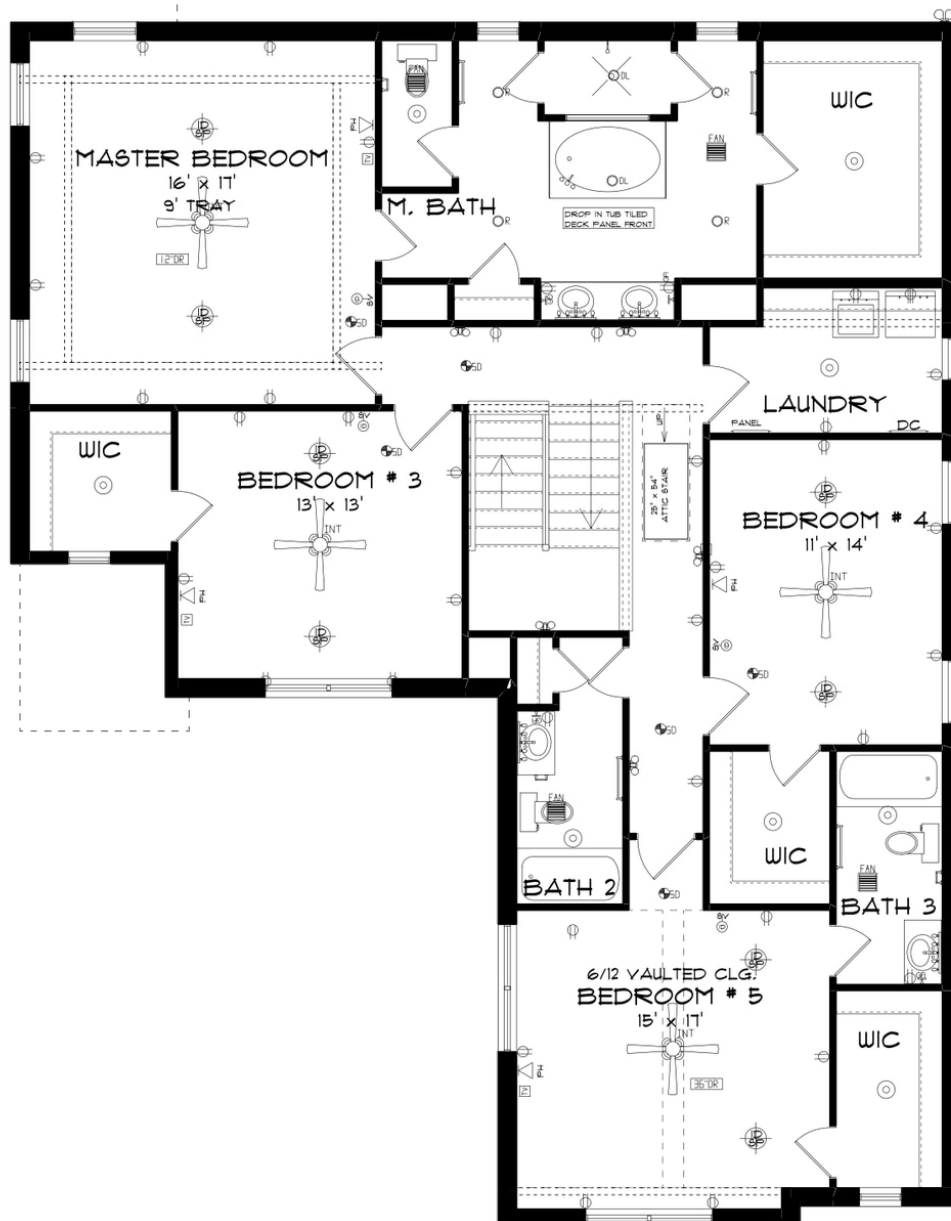
## FIRST FLOOR



Prices, plans, dimensions, features, specifications, materials, and availability of homes or communities are subject to change without notice or obligation. Illustrations are artists depictions only and may differ from completed improvements. All prices subject to change without notice. Please contact your sales associate before writing an offer.



## SECOND FLOOR



Prices, plans, dimensions, features, specifications, materials, and availability of homes or communities are subject to change without notice or obligation. Illustrations are artists depictions only and may differ from completed improvements. All prices subject to change without notice. Please contact your sales associate before writing an offer.