



**STONE MARTIN  
BUILDERS**



## **Thrive Allagash**

### **Home Plan**

Starting at \$269,399

**SQ FT:** 2,053

**Beds:** 4

**Baths:** 2.0

**Garage:** 2 Standard



ELEVATION A



ELEVATION B

## **ABOUT THIS PLAN**

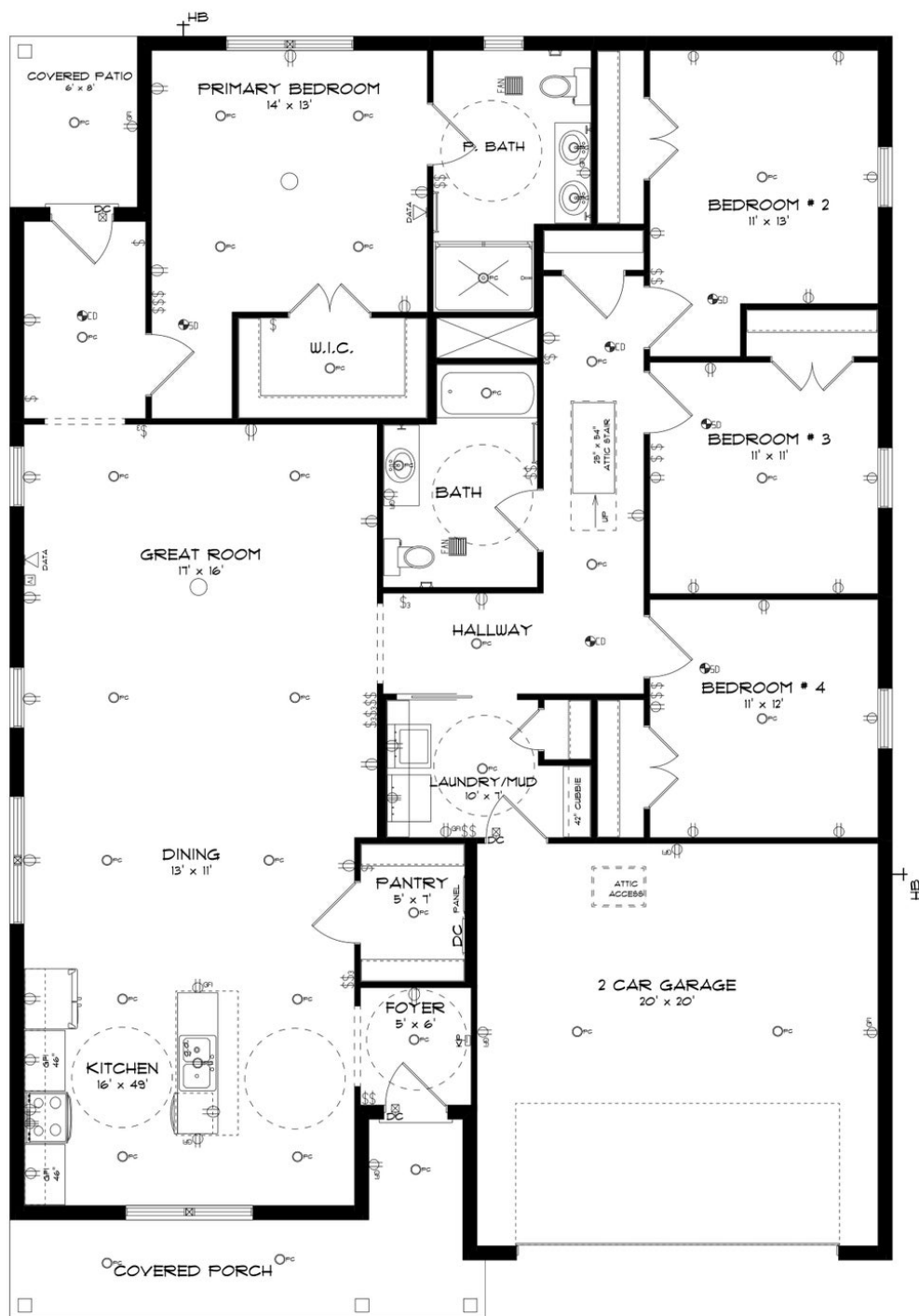
The "Allagash" floorplan includes 4 bedrooms and 2 bathrooms. A covered porch leads directly into the cozy foyer, which opens to the kitchen, dining and great room. This functional floorplan offers a seamless flow for entertaining or everyday life. The laundry room is accessible for the garage, making it a breeze to keep the house clean. It is also located near the front of the house for convenience. The primary retreat is located in the back of the house for complete privacy. Featuring a large walk-in closet, double-vanity and vinyl luxury floor tile, the primary creates a luxurious escape. The other three bedrooms complete the opposite side of the house and share a centrally located bathroom.

### **...Read More Online**

Prices, plans, dimensions, features, specifications, materials, and availability of homes or communities are subject to change without notice or obligation. Illustrations are artists depictions only and may differ from completed improvements. All prices subject to change without notice. Please contact your sales associate before writing an offer.



# STONE MARTIN BUILDERS



Prices, plans, dimensions, features, specifications, materials, and availability of homes or communities are subject to change without notice or obligation. Illustrations are artists depictions only and may differ from completed improvements. All prices subject to change without notice. Please contact your sales associate before writing an offer.



**STONE MARTIN  
BUILDERS**

## PLAN GALLERY



Prices, plans, dimensions, features, specifications, materials, and availability of homes or communities are subject to change without notice or obligation. Illustrations are artists depictions only and may differ from completed improvements. All prices subject to change without notice. Please contact your sales associate before writing an offer.





**STONE MARTIN  
BUILDERS**

## PLAN GALLERY



Prices, plans, dimensions, features, specifications, materials, and availability of homes or communities are subject to change without notice or obligation. Illustrations are artists depictions only and may differ from completed improvements. All prices subject to change without notice. Please contact your sales associate before writing an offer.