



**STONE MARTIN
BUILDERS**

Contact Our Sales Associate
None

334.645.9700 | hello@stonemartinbuilders.com



Huddlestone

Home Plan

Starting at \$445,899

SQ FT: 2,503

Beds: 4

Baths: 3.5

Garage: 3 Standard



ELEVATION E



ELEVATION F

ABOUT THIS PLAN

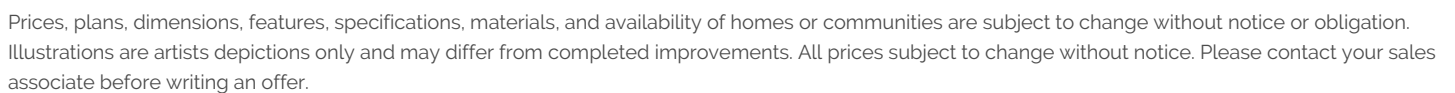
With 4 bedrooms and 3.5 baths huddled around the spectacular great room, "Huddlestone" offers a great plan with an exceptional use of space. The large great room area with vaulted ceilings is complete with a fireplace and opens into the spacious kitchen finished with granite countertops and a large island. Retreat to the entry or rear covered patios that offer a surplus amount of shade and a serene setting on any given day. Added to the primary bedroom and bath, the 3 additional bedrooms provide plenty of closet space and two bathrooms. This highly desirable plan is perfect for numerous ways of life, but especially for multi-generational families. The plan is rounded out exquisitely with a 3-car garage.

...Read More Online

Prices, plans, dimensions, features, specifications, materials, and availability of homes or communities are subject to change without notice or obligation. Illustrations are artists depictions only and may differ from completed improvements. All prices subject to change without notice. Please contact your sales associate before writing an offer.



334.645.9700 | hello@stonemartinbuilders.com

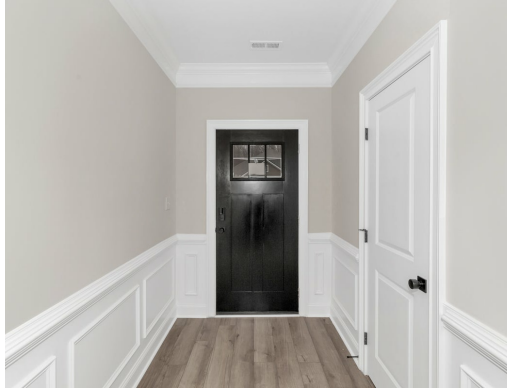




**STONE MARTIN
BUILDERS**

Contact Our Sales Associate
None
334.645.9700 | hello@stonemartinbuilders.com

PLAN GALLERY



Prices, plans, dimensions, features, specifications, materials, and availability of homes or communities are subject to change without notice or obligation. Illustrations are artists depictions only and may differ from completed improvements. All prices subject to change without notice. Please contact your sales associate before writing an offer.