



**STONE MARTIN
BUILDERS**



Mayfair

Home Plan

Starting at \$560,899

SQ FT: 3,670

Beds: 5

Baths: 4.5

Garage: 2 Standard



Elevation H



ELEVATION J

ABOUT THIS PLAN

Discover the charm of the "Mayfair" plan—a home thoughtfully crafted for comfortable living in every way. From the inviting grand entrance with a 2-story foyer to the practical open floorplan, this home seamlessly combines grandeur with functionality. Entertain effortlessly with a stylish dining room, a granite-topped butler's pantry, and a spacious kitchen serving island. Bedroom needs are met with a primary suite and a guest suite on the main level. Enjoy a primary suite that's both spacious and cozy, ensuring privacy and meeting various lifestyle demands. Upstairs, find three generously sized bedrooms, a flexible loft area, and practical use of space. In every aspect, this plan promises a fabulous living experience that won't disappoint. Get ready to feel right at home with the "Mayfair" plan!

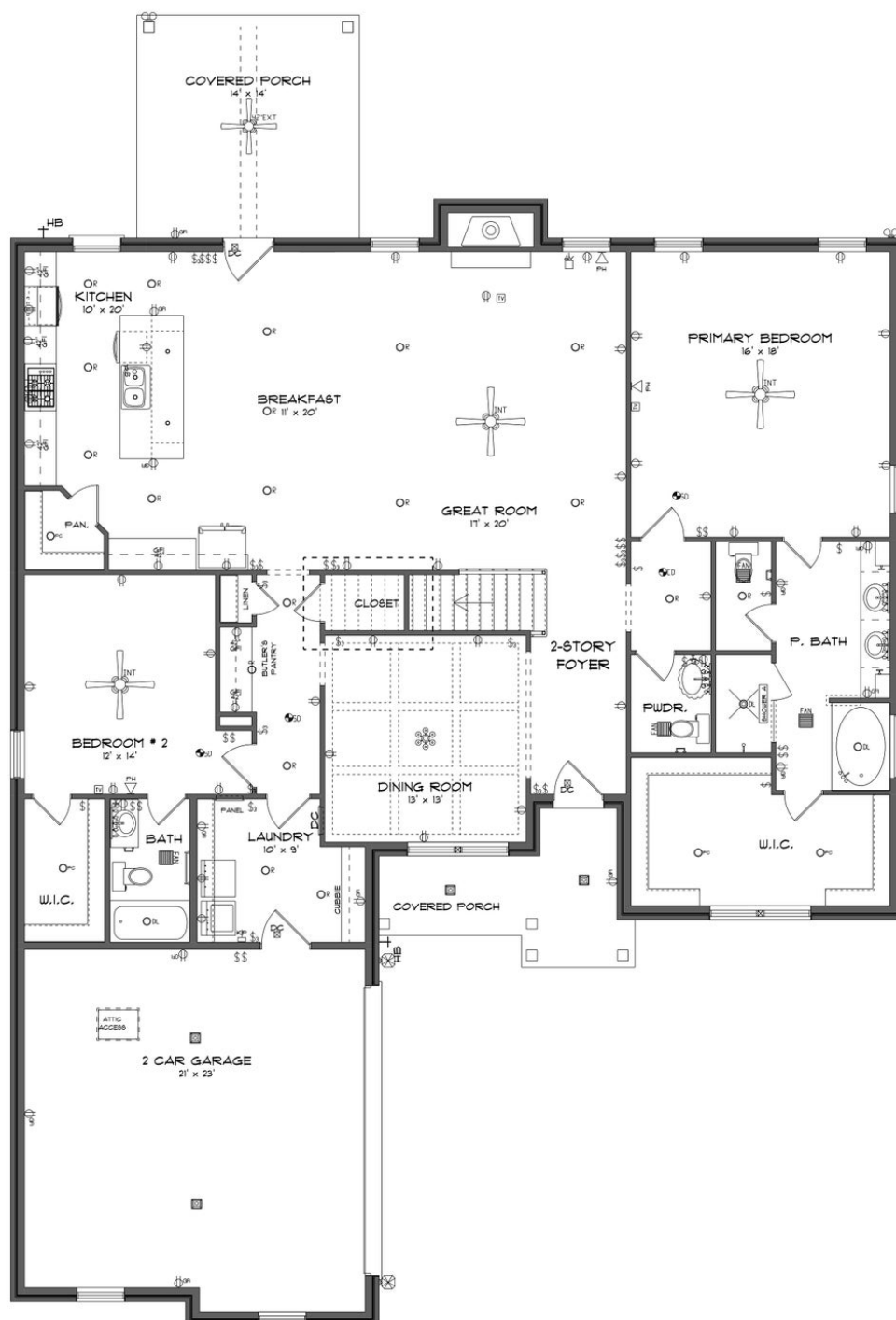
...Read More Online

Prices, plans, dimensions, features, specifications, materials, and availability of homes or communities are subject to change without notice or obligation. Illustrations are artists depictions only and may differ from completed improvements. All prices subject to change without notice. Please contact your sales associate before writing an offer.



**STONE MARTIN
BUILDERS**

FIRST FLOOR



Prices, plans, dimensions, features, specifications, materials, and availability of homes or communities are subject to change without notice or obligation. Illustrations are artists depictions only and may differ from completed improvements. All prices subject to change without notice. Please contact your sales associate before writing an offer.



The floor plan for the second floor includes the following rooms and features:

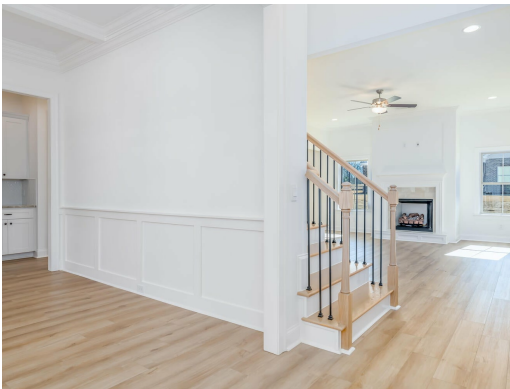
- BEDROOM # 5**: 13' x 14', located at the top left, featuring a ceiling fan and a closet.
- BATH**: Located between Bedroom #5 and Bedroom #4, containing a bathtub, toilet, and sink.
- BEDROOM # 4**: 12' x 14', located at the bottom left, featuring a ceiling fan and a closet.
- BATH**: Located between Bedroom #4 and the Loft, containing a bathtub, toilet, and sink.
- LOFT**: 11' x 20', located at the top right, featuring a ceiling fan and a closet.
- W.I.C.**: Two walk-in closets, one between the two bathrooms and one between Bedroom #4 and the Loft.
- CL.**: A linen closet located between the two bathrooms.
- STAIRS**: A set of stairs leading down, located between the Loft and Bedroom #3.
- BEDROOM # 3**: 13' x 13', located at the bottom right, featuring a ceiling fan and a closet.

Prices, plans, dimensions, features, specifications, materials, and availability of homes or communities are subject to change without notice or obligation. Illustrations are artists depictions only and may differ from completed improvements. All prices subject to change without notice. Please contact your sales associate before writing an offer.



**STONE MARTIN
BUILDERS**

PLAN GALLERY



Prices, plans, dimensions, features, specifications, materials, and availability of homes or communities are subject to change without notice or obligation. Illustrations are artists depictions only and may differ from completed improvements. All prices subject to change without notice. Please contact your sales associate before writing an offer.