



**STONE MARTIN
BUILDERS**



Cunningham

Home Plan

Starting at \$486,799

SQ FT: 3,089

Beds: 4

Baths: 3.0

Garage: 2 Standard



Elevation D



Elevation E

ABOUT THIS PLAN

The "Cunningham" floorplan features cunning details that will have you falling in love with this plan. The "Cunningham" boasts two entrances, one through the garage to the mudroom and one through the large, covered porch to the foyer. The foyer leads directly into the all-in-one kitchen, great room and dining room. The open-concept is a dream for entertaining or spending quality time together. The primary retreat off of the kitchen features a luxurious primary bathroom and two extensive walk-in closets. With two vanities on either side of the primary bathroom, you will never be fighting for counter space or elbow room. The upstairs flaunts a unique design with a loft, two bedrooms and a sweeping bonus room/bedroom. Need more space for a playroom? Make it a bonus room! Need a little more guest room or family room? Make it a bedroom and sitting area! The "Cunningham" floorplan offers endless possibilities to cater your house to your needs.

...Read More Online

Prices, plans, dimensions, features, specifications, materials, and availability of homes or communities are subject to change without notice or obligation. Illustrations are artists depictions only and may differ from completed improvements. All prices subject to change without notice. Please contact your sales associate before writing an offer.



This detailed floor plan shows a 2-car garage house with the following layout and features:

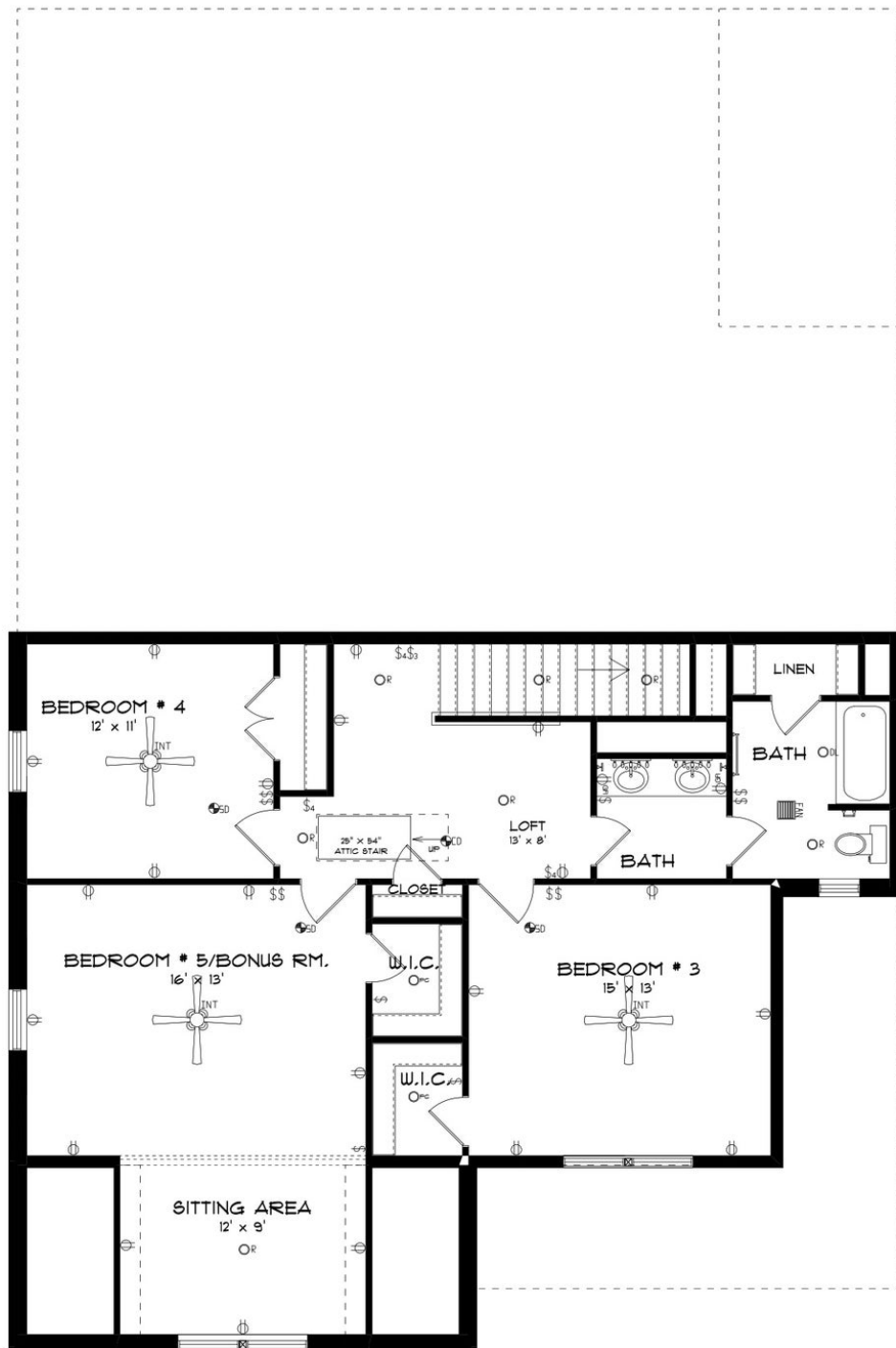
- Primary Bedroom:** 16' x 15', featuring a central ceiling fan, a closet, and a window with a view of the front porch.
- Great Room:** 17' x 15', featuring a central ceiling fan, a fireplace, and a view of the front porch.
- Kitchen:** 18' x 10', featuring a central island, a sink, a stove, and a view of the front porch.
- Dining:** 11' x 15', featuring a view of the front porch.
- Primary Bath:** Includes a bathtub, a toilet, and a vanity.
- Laundry:** 8' x 6', featuring a washer/dryer area and a storage cabinet.
- Mud Room:** Features a closet and a view of the front porch.
- Bedroom #2:** 15' x 13', featuring a central ceiling fan and a view of the front porch.
- 2 Car Garage:** 21' x 22', featuring a central ceiling fan and a view of the front porch.
- Covered Porch:** 9' x 15'-6", featuring a view of the front porch.
- Other Features:** The plan includes various closets, a mud room, a laundry room, a primary bath, a kitchen, a dining area, a great room, and a primary bedroom. It also shows a covered porch and a 2-car garage.

Prices, plans, dimensions, features, specifications, materials, and availability of homes or communities are subject to change without notice or obligation. Illustrations are artists depictions only and may differ from completed improvements. All prices subject to change without notice. Please contact your sales associate before writing an offer.



**STONE MARTIN
BUILDERS**

SECOND FLOOR



Prices, plans, dimensions, features, specifications, materials, and availability of homes or communities are subject to change without notice or obligation. Illustrations are artists depictions only and may differ from completed improvements. All prices subject to change without notice. Please contact your sales associate before writing an offer.



**STONE MARTIN
BUILDERS**

PLAN GALLERY



Prices, plans, dimensions, features, specifications, materials, and availability of homes or communities are subject to change without notice or obligation. Illustrations are artists depictions only and may differ from completed improvements. All prices subject to change without notice. Please contact your sales associate before writing an offer.