



**STONE MARTIN
BUILDERS**

Contact Our Sales Associate

None

334.645.9700 | hello@stonemartinbuilders.com



Thrive Kingsley

Home Plan

Starting at \$273,499

SQ FT: 1,575

Beds: 3

Baths: 2.0

Garage: 2 Standard



ELEVATION A



ELEVATION B

ABOUT THIS PLAN

Living up to its namesake, The "Kingsley" plan is regal, exquisite, and elegant. A plan designed to fit even the most royal needs. The covered entry opens to the large flex room and cozy entry way. Always dreamed of a home office, home gym, or even just a quiet place to relax? The flex room gives you the freedom to make those dreams a reality any way you want! The foyer also leads into an open-concept kitchen and great room. The kitchen is complete with a vast island and ample counter space. The great room leads to the primary retreat at the rear of the house. The primary suite boasts a double vanity, garden tub, and walk-in closet. The 2 other bedrooms are located on the side of the house and share a hallway bathroom. The laundry room is connected to the 2-car garage, creating a perfect space to kick off those muddy shoes before going inside.

...Read More Online

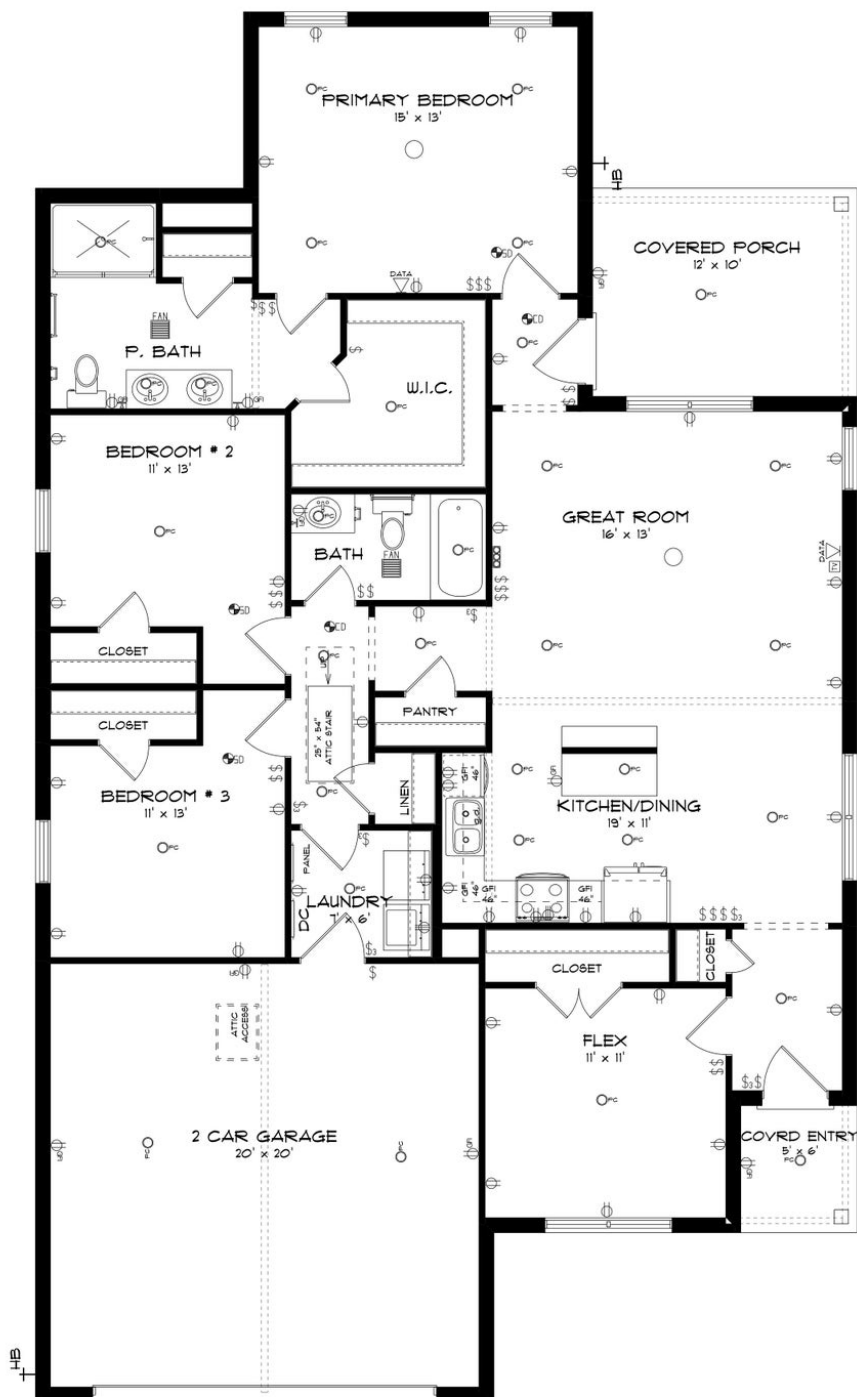
Prices, plans, dimensions, features, specifications, materials, and availability of homes or communities are subject to change without notice or obligation. Illustrations are artists depictions only and may differ from completed improvements. All prices subject to change without notice. Please contact your sales associate before writing an offer.



**STONE MARTIN
BUILDERS**

Contact Our Sales Associate
None

334.645.9700 | hello@stonemartinbuilders.com



Prices, plans, dimensions, features, specifications, materials, and availability of homes or communities are subject to change without notice or obligation. Illustrations are artists depictions only and may differ from completed improvements. All prices subject to change without notice. Please contact your sales associate before writing an offer.



**STONE MARTIN
BUILDERS**

Contact Our Sales Associate
None
334.645.9700 | hello@stonemartinbuilders.com

PLAN GALLERY



Prices, plans, dimensions, features, specifications, materials, and availability of homes or communities are subject to change without notice or obligation. Illustrations are artists depictions only and may differ from completed improvements. All prices subject to change without notice. Please contact your sales associate before writing an offer.



**STONE MARTIN
BUILDERS**

Contact Our Sales Associate

None

334.645.9700 | hello@stonemartinbuilders.com

PLAN GALLERY



Prices, plans, dimensions, features, specifications, materials, and availability of homes or communities are subject to change without notice or obligation. Illustrations are artists depictions only and may differ from completed improvements. All prices subject to change without notice. Please contact your sales associate before writing an offer.