



**STONE MARTIN  
BUILDERS**



## **St James II**

### **Home Plan**

Starting at \$437,599

**SQ FT:** 3,135

**Beds:** 4

**Baths:** 4.0

**Garage:** 3 Standard



ELEVATION E



ELEVATION F

## **ABOUT THIS PLAN**

Introducing the St. James II floorplan - a heavenly abode designed for modern living. Step into the grand foyer leading to a stunning kitchen with granite countertops and an island, seamlessly connecting to the dining area. The expansive great room features hardwood floors, a cozy fireplace, and vaulted ceilings, perfect for gatherings. Retreat to the spacious covered back patio for relaxation. With a 3-car garage providing ample storage, this 4-bed, 4-bath plan offers versatility and charm, ideal for multi-generational living. Discover the epitome of comfort and luxury in the St. James II.

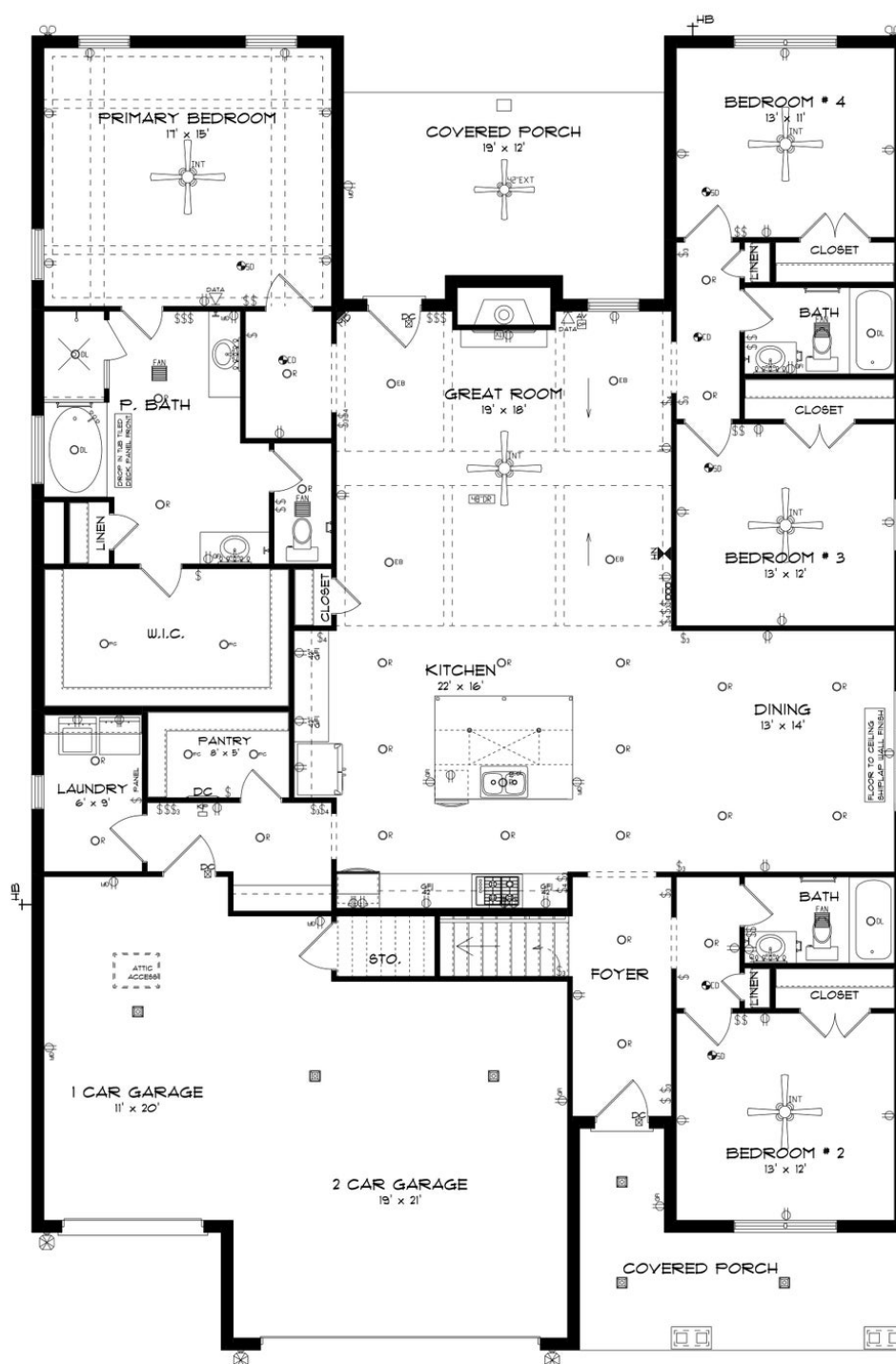
### **...Read More Online**

Prices, plans, dimensions, features, specifications, materials, and availability of homes or communities are subject to change without notice or obligation. Illustrations are artists depictions only and may differ from completed improvements. All prices subject to change without notice. Please contact your sales associate before writing an offer.



**STONE MARTIN  
BUILDERS**

## FIRST FLOOR

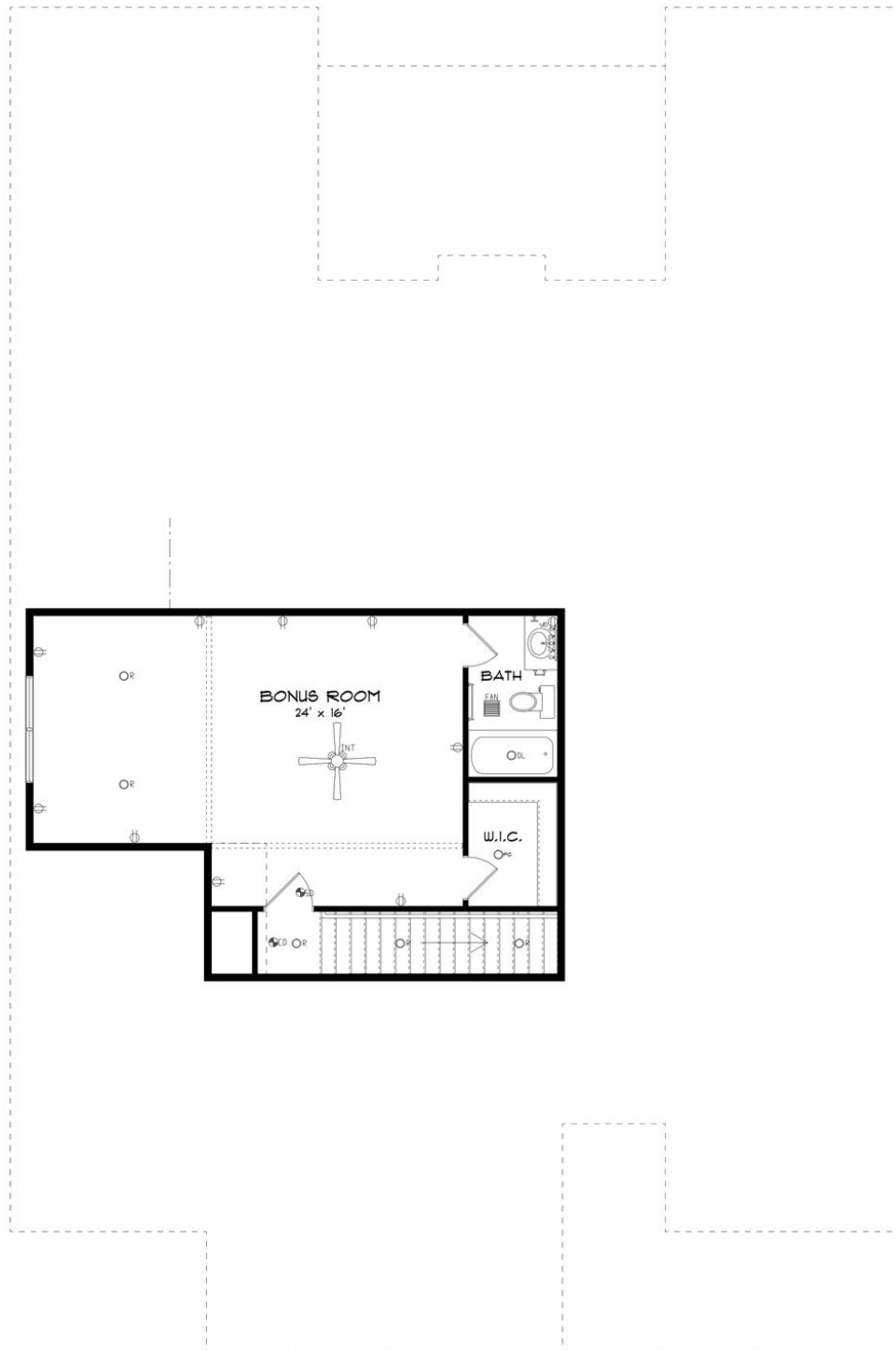


Prices, plans, dimensions, features, specifications, materials, and availability of homes or communities are subject to change without notice or obligation. Illustrations are artists depictions only and may differ from completed improvements. All prices subject to change without notice. Please contact your sales associate before writing an offer.



**STONE MARTIN  
BUILDERS**

## SECOND FLOOR



Prices, plans, dimensions, features, specifications, materials, and availability of homes or communities are subject to change without notice or obligation. Illustrations are artists depictions only and may differ from completed improvements. All prices subject to change without notice. Please contact your sales associate before writing an offer.





**STONE MARTIN  
BUILDERS**

## PLAN GALLERY



Prices, plans, dimensions, features, specifications, materials, and availability of homes or communities are subject to change without notice or obligation. Illustrations are artists depictions only and may differ from completed improvements. All prices subject to change without notice. Please contact your sales associate before writing an offer.



**STONE MARTIN  
BUILDERS**

## PLAN GALLERY



Prices, plans, dimensions, features, specifications, materials, and availability of homes or communities are subject to change without notice or obligation. Illustrations are artists depictions only and may differ from completed improvements. All prices subject to change without notice. Please contact your sales associate before writing an offer.