



**STONE MARTIN
BUILDERS**



Overton

Home Plan

Starting at \$401,199

SQ FT: 2,682

Beds: 4

Baths: 2.5

Garage: 2 Standard



ELEVATION C



ELEVATION E

ABOUT THIS PLAN

The "Overton" is a 1 ½ story open floorplan with ample possibilities. This four bedroom, two and a half bath plan with bonus room begins with a refined foyer entry way that opens into a roomy living area with a vaulted ceiling. Next experience the open kitchen with large center island and adjoining dining room. The kitchen offers built in appliances, granite countertops and an expanded pantry. The primary quarters provide a large bedroom and walk in closet as well as a luxurious bathroom complete with a double granite vanity, garden/soaking tub, and tiled shower with glass door. The bonus room located upstairs includes a half bath and has plenty of possibilities as an entertainment area or extra bedroom. This layout truly is a must see!

...Read More Online

Prices, plans, dimensions, features, specifications, materials, and availability of homes or communities are subject to change without notice or obligation. Illustrations are artists depictions only and may differ from completed improvements. All prices subject to change without notice. Please contact your sales associate before writing an offer.



This detailed floor plan shows a 2-car garage house with the following features:

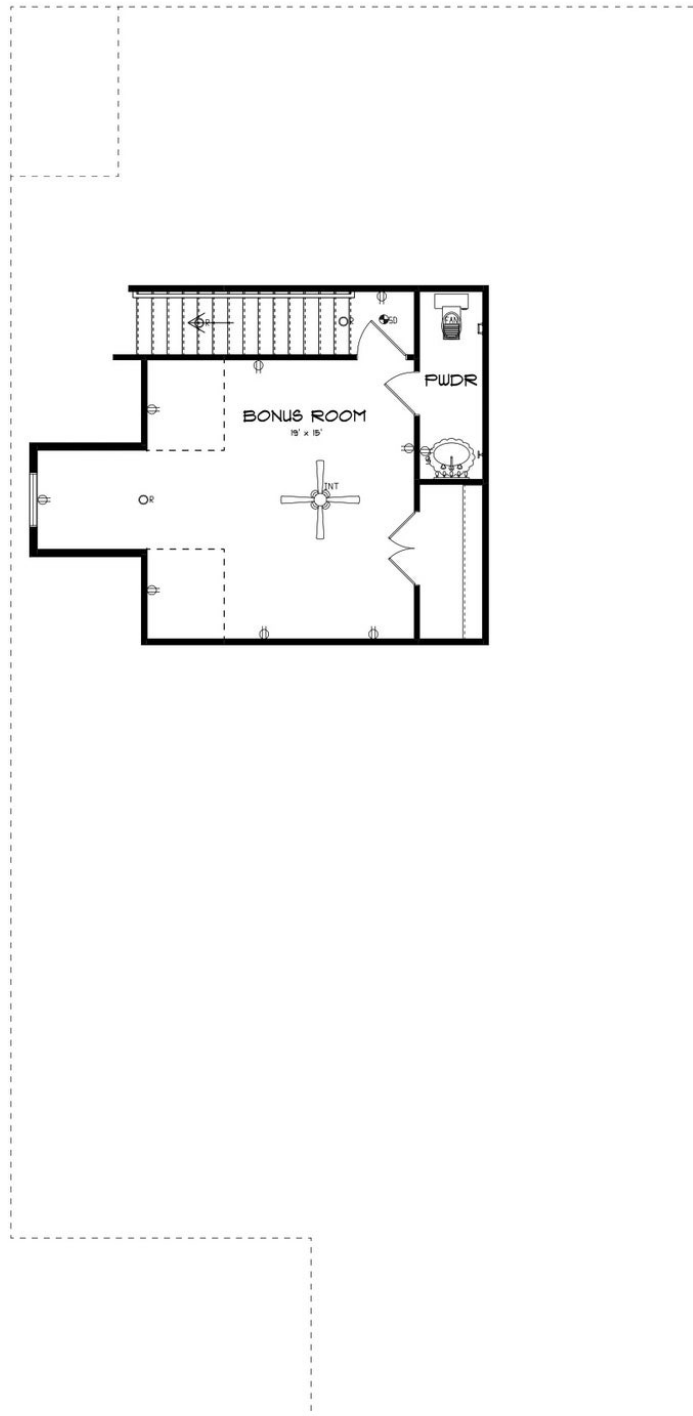
- Garage:** 2 CAR GARAGE, 21' x 21', with a 20' x 34' ATTIC STAIRS and ATTIC ACCESS.
- Living Areas:**
 - Great Room:** 22' x 17', featuring a fireplace, a large window, and a ceiling fan.
 - Dining:** 10' x 15', with a window and a ceiling fan.
 - Kitchen:** 12' x 15', with a window, a ceiling fan, and a pantry.
 - Pantry:** 12' x 15', with a window and a ceiling fan.
 - Foyer:** 11' x 12', with a window and a ceiling fan.
- Bedrooms:**
 - Primary Bedroom:** 16' x 15', with a window, a ceiling fan, and a closet.
 - Bedroom #2:** 11' x 12', with a window and a ceiling fan.
 - Bedroom #3:** 11' x 13', with a window and a ceiling fan.
 - Bedroom #4:** 11' x 15', with a window and a ceiling fan.
- Bathrooms:**
 - P. Bath:** 11' x 15', with a window, a ceiling fan, and a toilet.
 - Bath:** 11' x 13', with a window, a ceiling fan, and a toilet.
- Other Features:**
 - W.I.C. (Walk-In Closet):** Located in the Primary Bedroom, Bedroom #4, and near the Laundry.
 - Laundry:** 11' x 13', with a window and a ceiling fan.
 - Closet:** Located in the Foyer and near the Primary Bedroom.
 - Covered Porch:** 6'-4" x 10'-2", with a window and a ceiling fan.
 - Cover'd Porch:** Located at the front of the house.
 - Attic:** 20' x 34', with stairs and access.

Prices, plans, dimensions, features, specifications, materials, and availability of homes or communities are subject to change without notice or obligation. Illustrations are artists depictions only and may differ from completed improvements. All prices subject to change without notice. Please contact your sales associate before writing an offer.



**STONE MARTIN
BUILDERS**

SECOND FLOOR



Prices, plans, dimensions, features, specifications, materials, and availability of homes or communities are subject to change without notice or obligation. Illustrations are artists depictions only and may differ from completed improvements. All prices subject to change without notice. Please contact your sales associate before writing an offer.



**STONE MARTIN
BUILDERS**

PLAN GALLERY



Prices, plans, dimensions, features, specifications, materials, and availability of homes or communities are subject to change without notice or obligation. Illustrations are artists depictions only and may differ from completed improvements. All prices subject to change without notice. Please contact your sales associate before writing an offer.