



**136 Asbury Park Drive**  
**Dothan, AL 36301**  
**Hidden Lake East**

**\$268,099**

**Plan:** Thrive Archer

**SQ FT:** 1,833

**Beds:** 3

**Baths:** 2.0

**Garage:** 2

## ABOUT THIS HOUSE

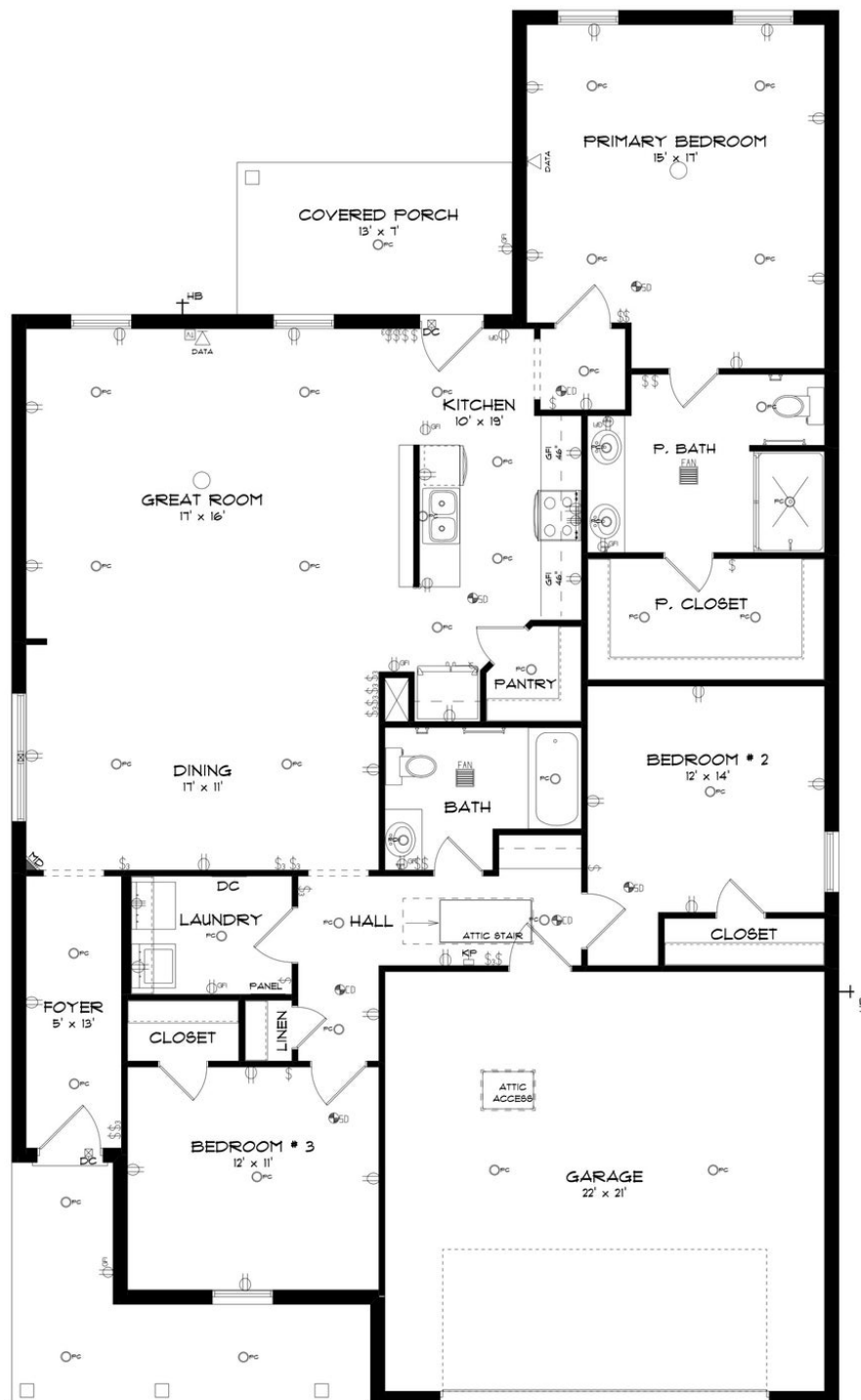
Step into the Archer – where elegance meets practicality in a thoughtfully designed floorplan. Upon entering, an elegant foyer beckons you to explore further, guiding you to the very heart of the Archer. Here, you'll discover an inviting, open expanse that effortlessly unites the dining area and the great room, all seamlessly connected to the central kitchen. In the kitchen, a striking granite-topped island takes center stage, offering both a stylish focal point and a practical workspace. The large corner pantry provides ample storage for all your culinary needs, ensuring you have everything at your fingertips. The primary bedroom, located at the rear of the home, offers a private retreat and features a generously sized closet for all your wardrobe essentials, and the primary bath boasts dual sink vanities, adding convenience to your daily routine. Two additional secondary bedrooms provide flexibility for family, guests, or even a home office, ensuring you have plenty of space to make this home uniquely yours. Step outside to the spacious covered porch, where you can enjoy outdoor living and entertain guests in style. The Archer floorplan is a perfect blend of elegance and functionality, providing a space where you can create lasting memories and find comfort in every corner.

## ABOUT HIDDEN LAKE EAST

Stone Martin Builders wants to help you Spring into Savings on a new home! Ask a Sales Professional about our special incentives and new home savings! Nestled amidst serene lakeside views, Hidden Lake East offers more than just a home—it offers a vibrant community atmosphere. Enjoy outdoor recreation with a beautiful lake for fishing and kayaking, alongside a lakeside playground for endless fun. Conveniently located near prominent employers and downtown Dothan's charming shops and restaurants, Hidden Lake East provides the perfect balance of tranquility and accessibility. Immerse yourself in spacious floorplans, meticulously designed to suit your lifestyle needs. Indulge in gourmet kitchens, adorned with top-of-the-line appliances and thoughtful design details. Experience the convenience of integrated smart home connectivity, seamlessly enhancing your daily routines. Our commitment to high-quality construction and energy efficiency ensures a home that stands the test of time, providing comfort and savings for years to come. Ready to experience the Stone Martin Builders difference? Schedule a visit to Hidden Lake East and meet with our knowledgeable Sales Professionals. Explore available homes and embark on the journey to find your personal oasis in Dothan, AL.



**STONE MARTIN  
BUILDERS**



Prices, plans, dimensions, features, specifications, materials, and availability of homes or communities are subject to change without notice or obligation. Illustrations are artists depictions only and may differ from completed improvements. All prices subject to change without notice. Please contact your sales associate before writing an offer.