



**STONE MARTIN
BUILDERS**



**194 Laurel Branch Drive
Dothan, AL 36305
Magnolia Trace**

\$496,439

Plan: Bainbridge

SQ FT: 2,799

Beds: 4

Baths: 3.0

Garage: 2

ABOUT THIS HOUSE

The "Bainbridge" Plan is perfect for those who prefer elegance and space in the convenience of one level. This 4 bedroom, 3 bathroom plan features a sweeping great room and kitchen area that is perfect for cooking while also entertaining. A separate dining room is located at the front of the house connecting to the elegant foyer entry flowing into the open kitchen and great room. The kitchen features an attractive granite island that has plenty of seating space perfect for serving food while also entertaining guest in the great room. The grand primary suite provides a large private space along with a connecting bathroom complete with double vanity, separate shower, soaking tub and abundant storage space in the large walk in closet and linen closet. Three more bedrooms complete this floor plan, all with plentiful closet space along with two full bathrooms. This well laid floor plan can accommodate the space needed for a big family all in the space of one floor.

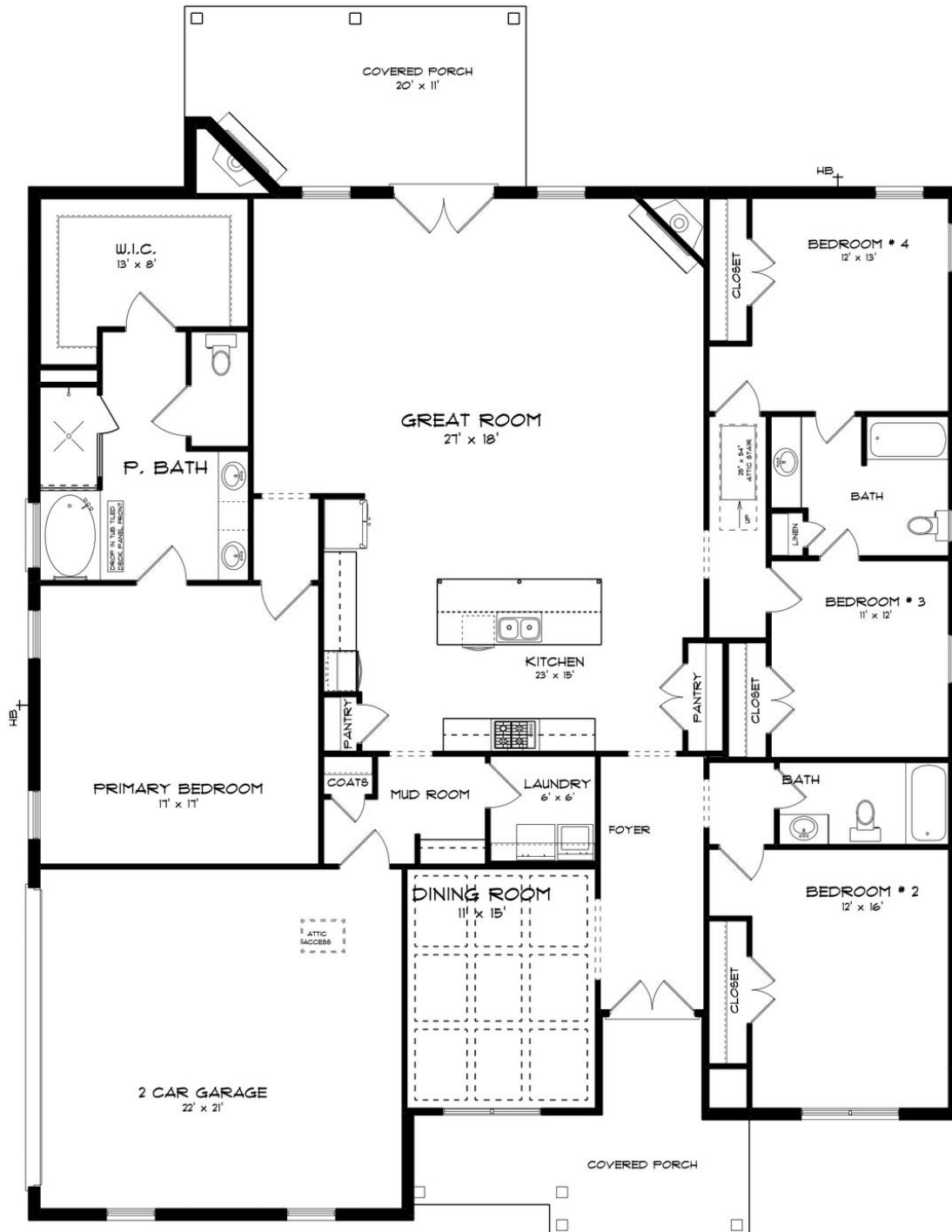
ABOUT MAGNOLIA TRACE

Welcome to Magnolia Trace, a beautiful blend of Southern charm and modern convenience in Dothan, AL. Situated off S Brannon Stand & County Line Road, this Stone Martin Builders community offers high-quality construction, gourmet kitchens, and integrated smart home technology. Residents can enjoy planned community amenities, including a playground and pool. With convenient access to Hwy 52 and nearby parks, Magnolia Trace provides the perfect setting for a vibrant, connected lifestyle. Discover spacious floorplans and thoughtful design details crafted to enhance your daily life. Gourmet kitchens, integrated smart home connectivity, and high-quality construction are hallmarks of Stone Martin Builders. Ready to experience the Stone Martin Builders difference? Schedule a visit to Magnolia Trace and consult with our knowledgeable Sales Professionals. Explore available homes, envision your future, and embark on the journey to find your ideal home in Houston County, AL. Welcome home to Magnolia Trace—where your personalized haven awaits.

Prices, plans, dimensions, features, specifications, materials, and availability of homes or communities are subject to change without notice or obligation. Illustrations are artists depictions only and may differ from completed improvements. All prices subject to change without notice. Please contact your sales associate before writing an offer.



ELEVATION J



Prices, plans, dimensions, features, specifications, materials, and availability of homes or communities are subject to change without notice or obligation. Illustrations are artists depictions only and may differ from completed improvements. All prices subject to change without notice. Please contact your sales associate before writing an offer.