



**STONE MARTIN  
BUILDERS**



**107 Cleo Court  
Enterprise, AL 36330  
Hunter's Hill**

**\$376,476**

**Plan: Overton**

**SQ FT: 2,682**

**Beds: 4**

**Baths: 2.5**

**Garage: 2**

## ABOUT THIS HOUSE

The "Overton" is a 1 ½ story open floorplan with ample possibilities. This four bedroom, two and a half bath plan with bonus room begins with a refined foyer entry way that opens into a roomy living area with a vaulted ceiling. Next experience the open kitchen with large center island and adjoining dining room. The kitchen offers built in appliances, granite countertops and an expanded pantry. The primary quarters provide a large bedroom and walk in closet as well as a luxurious bathroom complete with a double granite vanity, garden/soaking tub, and tiled shower with glass door. The bonus room located upstairs includes a half bath and has plenty of possibilities as an entertainment area or extra bedroom. This layout truly is a must see!

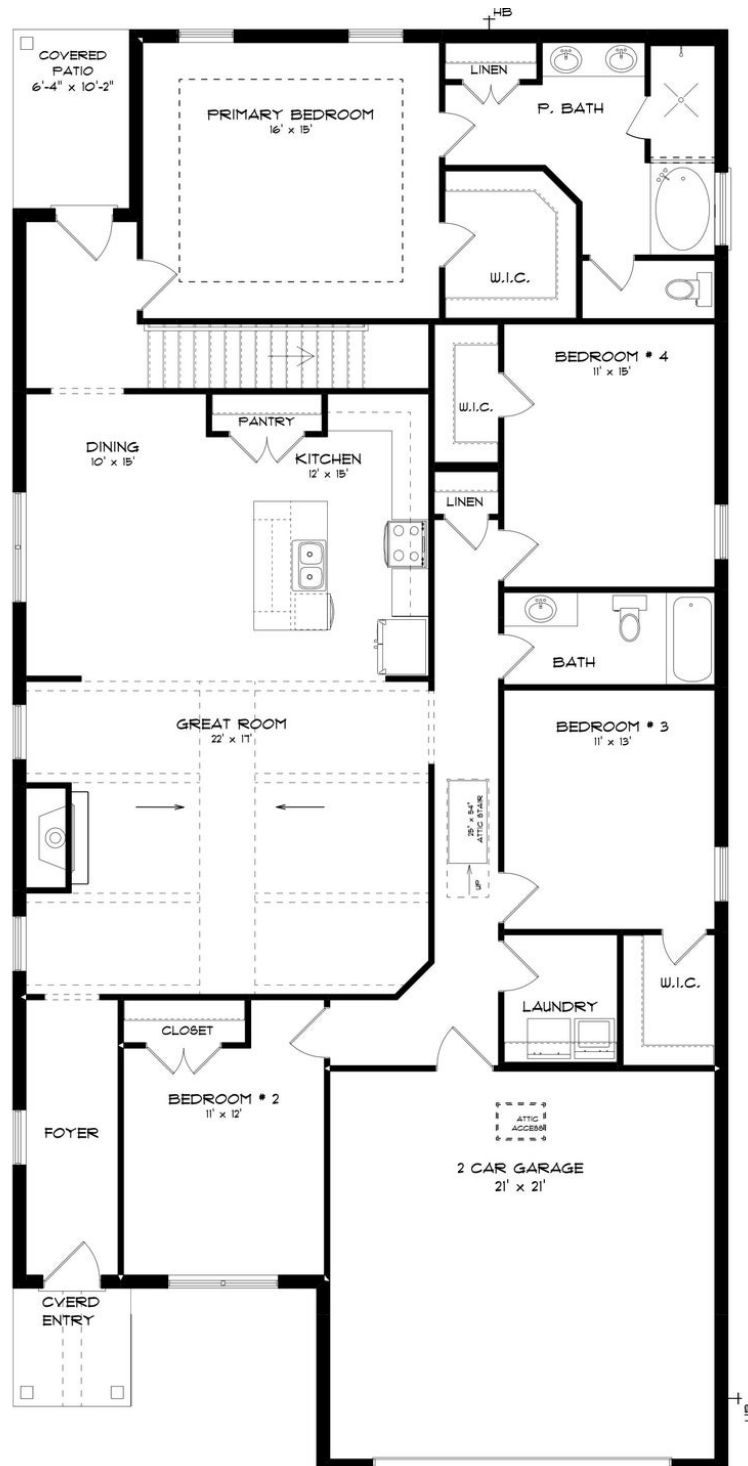
## ABOUT HUNTER'S HILL

Discover the epitome of contemporary living at Hunter's Hill by Stone Martin Builders, a haven nestled in Enterprise, AL. Situated conveniently off Ozark Highway and Porter Lunsford Road, this master-planned community redefines comfort and convenience. Hunter's Hill offers an impressive array of single-family homes and townhome residences ranging from 1,900 to 3,100 square feet. A future amenity promises even more to look forward to in this vibrant community. Residents will relish the planned community pool, an inviting space to relax and unwind amidst the Alabama sunshine. Hunter's Hill is mere minutes away from essential amenities such as hospitals, shopping centers, schools, dining, and entertainment options. The community's proximity to Fort Novosel U.S. Army post—a short drive away—serves as a testament to the community's accessibility. Experience the pinnacle of modern living with integrated smart home technology, ensuring your new home adapts to your lifestyle seamlessly. Quality construction, gourmet kitchens, and designer-selected finishes add the perfect touch to elevate your living experience. Whether you're seeking a serene retreat or a bustling environment, this community seamlessly adapts to your needs. Ready to experience the Stone Martin Builders difference? Schedule a visit to Hunter's Hill and meet with our knowledgeable Sales Professionals. Explore available homes and embark on the journey to find your personal oasis in Enterprise, AL.

Prices, plans, dimensions, features, specifications, materials, and availability of homes or communities are subject to change without notice or obligation. Illustrations are artists depictions only and may differ from completed improvements. All prices subject to change without notice. Please contact your sales associate before writing an offer.



## FIRST FLOOR (F)



Prices, plans, dimensions, features, specifications, materials, and availability of homes or communities are subject to change without notice or obligation. Illustrations are artists depictions only and may differ from completed improvements. All prices subject to change without notice. Please contact your sales associate before writing an offer.



## SECOND FLOOR (F)

