



**STONE MARTIN
BUILDERS**



**213 Hundley Drive
Enterprise, AL 36330
Hunter's Hill**

\$349,900

Plan: Kinkade

SQ FT: 2,383

Beds: 3

Baths: 2.5

Garage: 2

ABOUT THIS HOUSE

Constant appeal and elegant definitions are found in the "Kinkade" plan for those calling for luxury and comfort. A vaulted beamed ceiling in the huge great room accentuates the space along with excellent finishes. The custom fireplace allows an even greater level of amenities while offering sheer enjoyment of an evening fire on those cooler nights. The huge kitchen's attention to custom cabinetry, upgraded stainless steel appliances, and granite counter tops, are sure to enhance cooking and eating experiences. Retire to the primary suite that exudes privacy and use of space and take advantage of the well thought out primary bath with every amenity for speedy starts for the day. From something as simple as a laundry room that does not abut any bedroom or the bonus room located upstairs along with a half bath that can be used as an office space, entertainment room, or even another bedroom; this plan provides plenty of comfort.

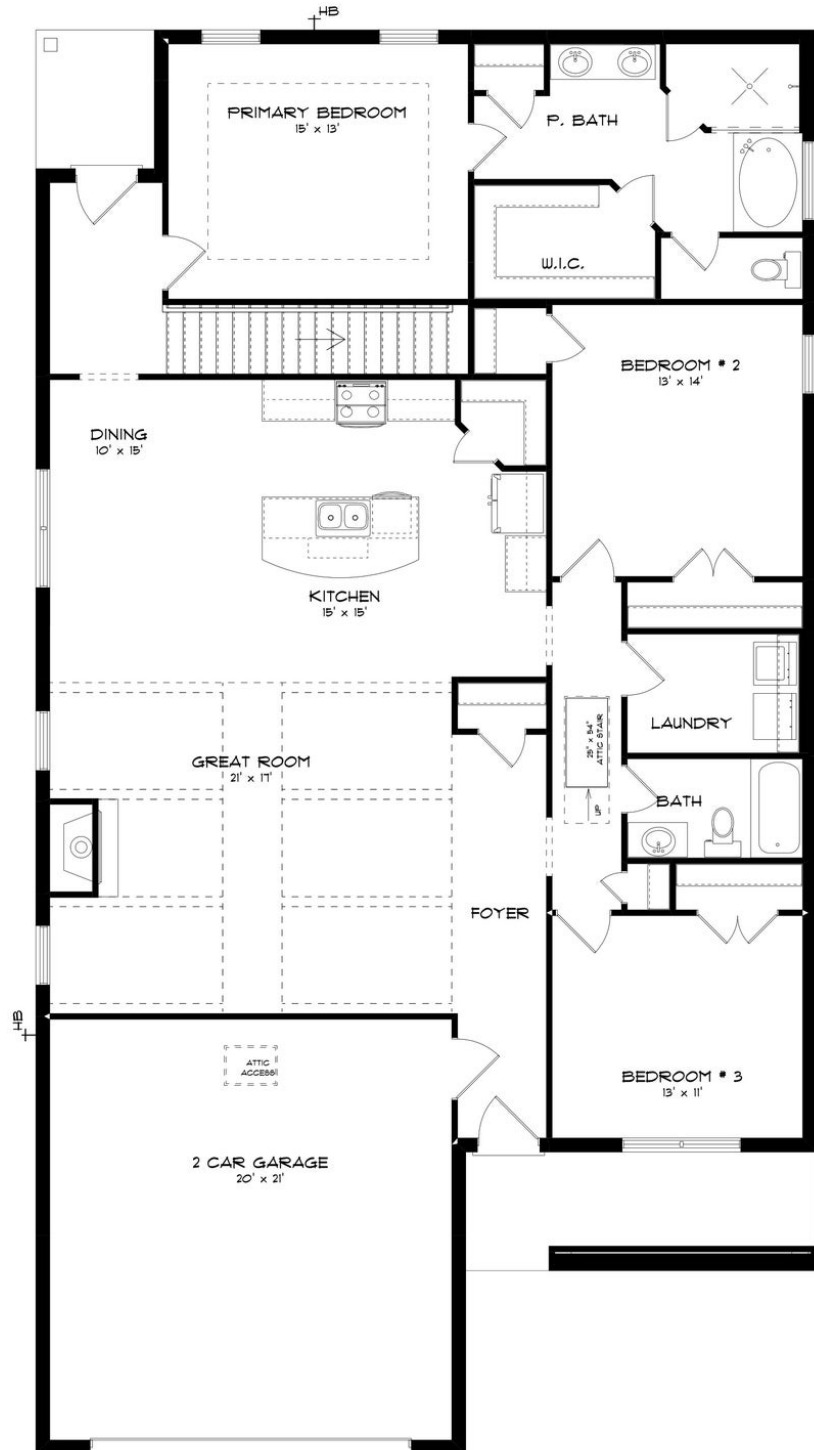
ABOUT HUNTER'S HILL

Stone Martin Builders wants to help you Splash into Savings on a new home! Ask a Sales Professional about our special incentives and new home savings! Discover the epitome of contemporary living at Hunter's Hill by Stone Martin Builders, a haven nestled in Enterprise, AL. Situated conveniently off Ozark Highway and Porter Lunsford Road, this master-planned community redefines comfort and convenience. Hunter's Hill offers an impressive array of single-family homes and townhome residences ranging from 1,900 to 3,100 square feet. A future amenity promises even more to look forward to in this vibrant community. Residents will relish the planned community pool, an inviting space to relax and unwind amidst the Alabama sunshine. Hunter's Hill is mere minutes away from essential amenities such as hospitals, shopping centers, schools, dining, and entertainment options. The community's proximity to Fort Novosel U.S. Army post—a short drive away—serves as a testament to the community's accessibility. Experience the pinnacle of modern living with integrated smart home technology, ensuring your new home adapts to your lifestyle seamlessly. Quality construction, gourmet kitchens, and designer-selected finishes add the perfect touch to elevate your living experience. Whether you're seeking a serene retreat or a bustling environment, this community seamlessly adapts to your needs. Ready to experience the Stone Martin Builders difference? Schedule a visit to Hunter's Hill and meet with ...

Prices, plans, dimensions, features, specifications, materials, and availability of homes or communities are subject to change without notice or obligation. Illustrations are artists depictions only and may differ from completed improvements. All prices subject to change without notice. Please contact your sales associate before writing an offer.



FIRST FLOOR (H)

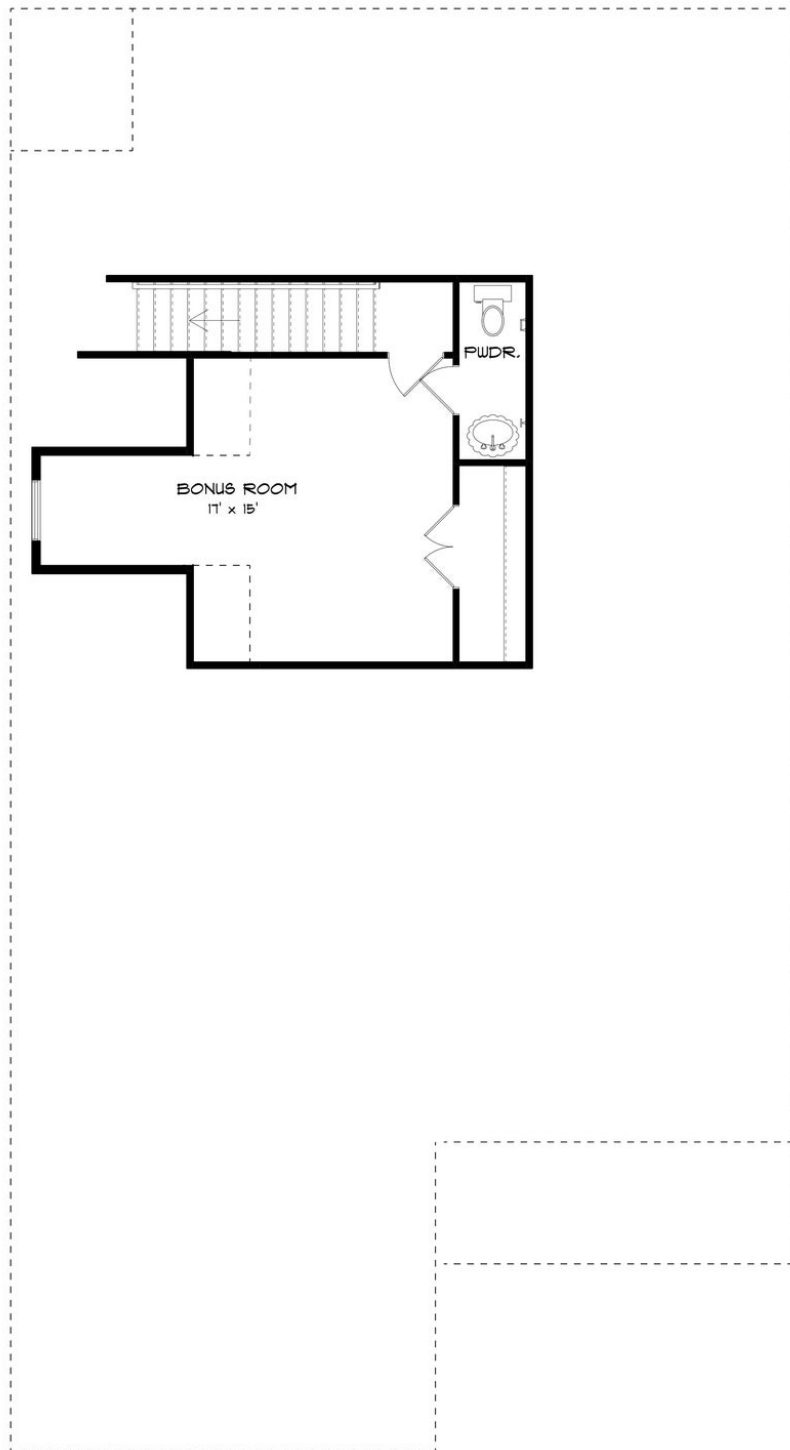


Prices, plans, dimensions, features, specifications, materials, and availability of homes or communities are subject to change without notice or obligation. Illustrations are artists depictions only and may differ from completed improvements. All prices subject to change without notice. Please contact your sales associate before writing an offer.



STONE MARTIN
BUILDERS

SECOND FLOOR (H)



Prices, plans, dimensions, features, specifications, materials, and availability of homes or communities are subject to change without notice or obligation. Illustrations are artists depictions only and may differ from completed improvements. All prices subject to change without notice. Please contact your sales associate before writing an offer.