



**STONE MARTIN  
BUILDERS**



**109 Whitner Drive  
Hazel Green, AL 35750  
Townsend Farm**

**\$273,699**

**Plan:** Thrive Hardaway

**SQ FT:** 1,461

**Beds:** 3

**Baths:** 2.0

**Garage:** 2

## ABOUT THIS HOUSE

Contrary to its name, the "Hardaway" will do everything except push you away. This charming 1-story, 3 bedroom 2 bathroom plan was designed for maximum privacy and serenity. The foyer opens to the open-concept great room, dining room, and kitchen. The kitchen boasts a large island and pantry that looks onto the dining space. Sectioned on the side of the house lies the primary retreat – complete with a tub shower and spacious walk-in closet. Located at the rear of the house are 2 additional bedrooms and a shared bathroom. The laundry room is connected to the 2-car garage, creating a perfect space to kick off those muddy shoes before going inside. The covered porch is a dream for those perfect fall evenings and cool spring nights.

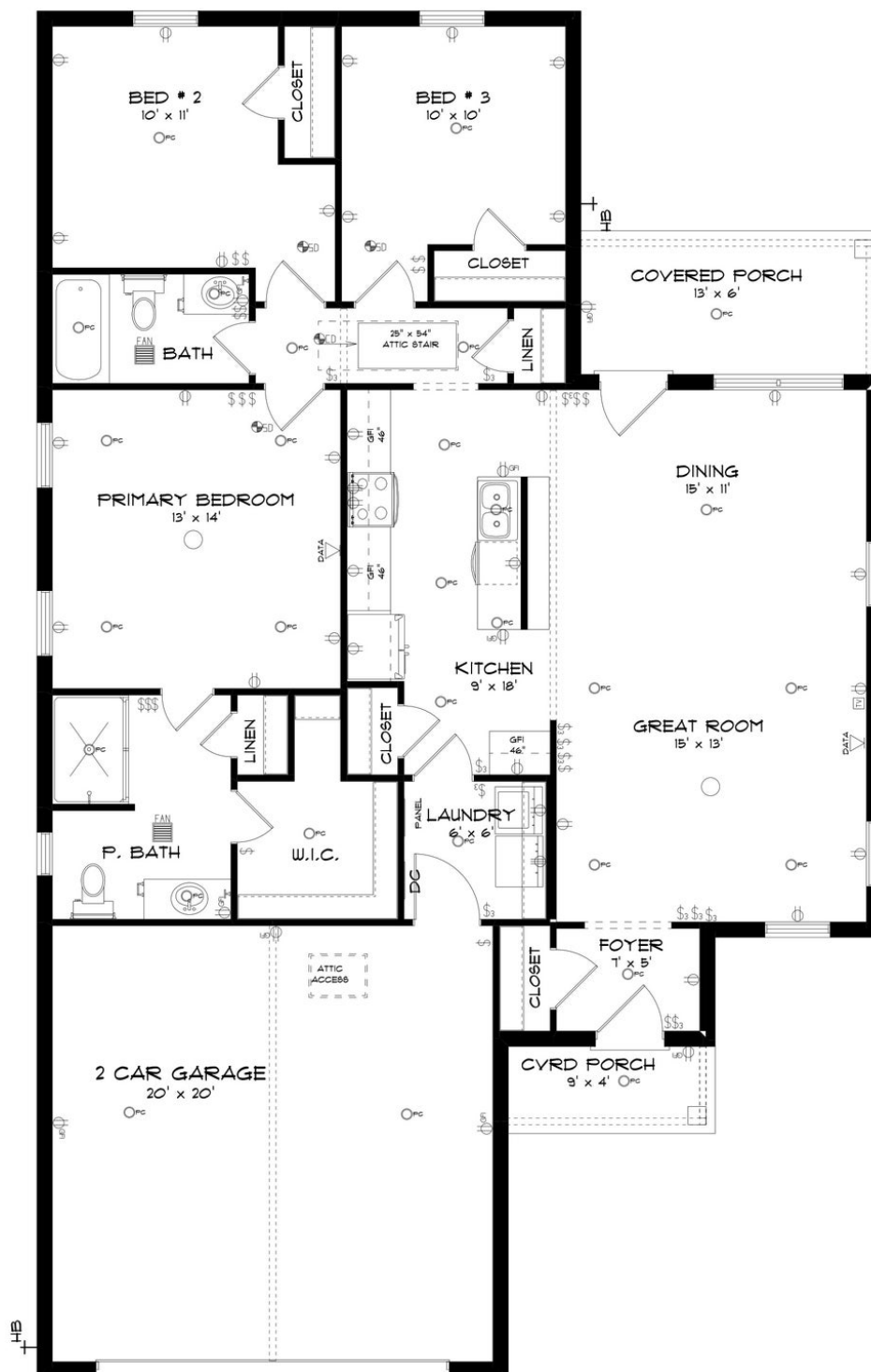
## ABOUT TOWNSEND FARM

Stone Martin Builders wants to help you Spring into Savings on a new home! Ask a Sales Professional about our special incentives and new home savings! Nestled in the heart of Hazel Green, Townsend Farm welcomes you to a unique blend of small-town charm and city convenience. Conveniently situated off Highway 231/431, this community offers the perfect balance of tranquility and accessibility. Enjoy the best of both worlds with Townsend Farm. Experience the warmth of a small-town atmosphere while being just moments away from shops, restaurants, and the bustling medical district. It's the ideal location for those seeking a peaceful retreat without sacrificing city conveniences. Embrace the leisurely pace of life at Townsend Farm. Surround yourself with quiet surroundings, indulge in a round of golf at the nearby links, or plan memorable family outings to the renowned Tate Farms. Choose from our well-designed ranch plans, tailored to provide comfort and solace after a long day. Whether you're starting a family or seeking a tranquil haven, Townsend Farm is the perfect community for your new home. Ready to experience the Stone Martin Builders difference? Schedule a visit to Townsend Farm and meet with our knowledgeable Sales Professionals. Explore available homes, envision your future, and embark on the journey to find your dream home in Hazel Green, AL.

Prices, plans, dimensions, features, specifications, materials, and availability of homes or communities are subject to change without notice or obligation. Illustrations are artists depictions only and may differ from completed improvements. All prices subject to change without notice. Please contact your sales associate before writing an offer.



# STONE MARTIN BUILDERS



Prices, plans, dimensions, features, specifications, materials, and availability of homes or communities are subject to change without notice or obligation. Illustrations are artists depictions only and may differ from completed improvements. All prices subject to change without notice. Please contact your sales associate before writing an offer.