



**STONE MARTIN
BUILDERS**



**167 Whitner Drive
Hazel Green, AL 35750
Townsend Farm**

\$284,199

Plan: Thrive Kingsley

SQ FT: 1,631

Beds: 3

Baths: 2.0

Garage: 2

ABOUT THIS HOUSE

Living up to its namesake, The "Kingsley" plan is regal, exquisite, and elegant. A plan designed to fit even the most royal needs. The covered entry opens to the large flex room and cozy entry way. Always dreamed of a home office, home gym, or even just a quiet place to relax? The flex room gives you the freedom to make those dreams a reality any way you want! The foyer also leads into an open-concept kitchen and great room. The kitchen is complete with a vast island and ample counter space. The great room leads to the primary retreat at the rear of the house. The primary suite boasts a double vanity, garden tub, and walk-in closet. The 2 other bedrooms are located on the side of the house and share a hallway bathroom. The laundry room is connected to the 2-car garage, creating a perfect space to kick off those muddy shoes before going inside.

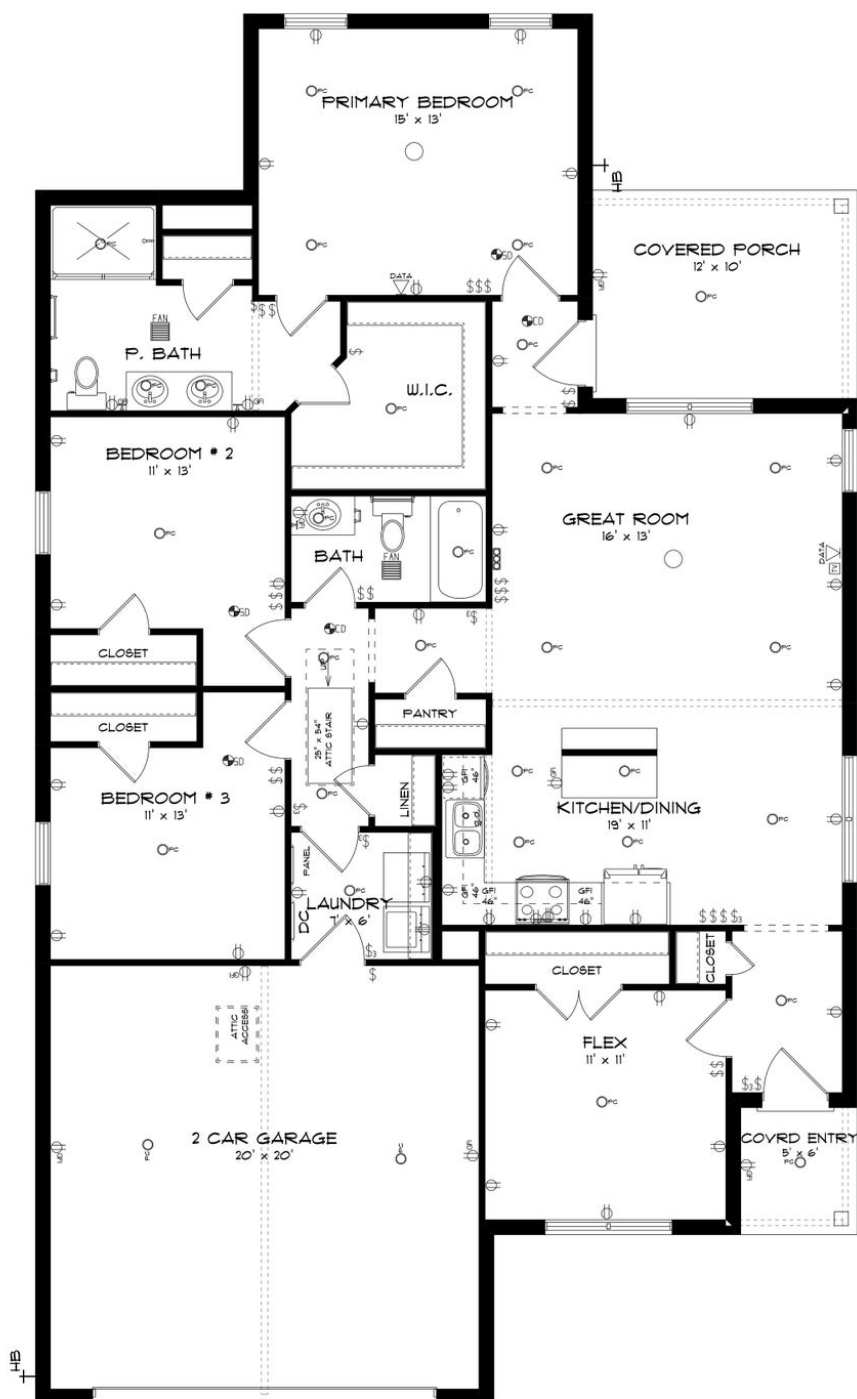
ABOUT TOWNSEND FARM

Stone Martin Builders wants to help you Spring into Savings on a new home! Ask a Sales Professional about our special incentives and new home savings! Nestled in the heart of Hazel Green, Townsend Farm welcomes you to a unique blend of small-town charm and city convenience. Conveniently situated off Highway 231/431, this community offers the perfect balance of tranquility and accessibility. Enjoy the best of both worlds with Townsend Farm. Experience the warmth of a small-town atmosphere while being just moments away from shops, restaurants, and the bustling medical district. It's the ideal location for those seeking a peaceful retreat without sacrificing city conveniences. Embrace the leisurely pace of life at Townsend Farm. Surround yourself with quiet surroundings, indulge in a round of golf at the nearby links, or plan memorable family outings to the renowned Tate Farms. Choose from our well-designed ranch plans, tailored to provide comfort and solace after a long day. Whether you're starting a family or seeking a tranquil haven, Townsend Farm is the perfect community for your new home. Ready to experience the Stone Martin Builders difference? Schedule a visit to Townsend Farm and meet with our knowledgeable Sales Professionals. Explore available homes, envision your future, and embark on the journey to find your dream home in Hazel Green, AL.

Prices, plans, dimensions, features, specifications, materials, and availability of homes or communities are subject to change without notice or obligation. Illustrations are artists depictions only and may differ from completed improvements. All prices subject to change without notice. Please contact your sales associate before writing an offer.



**STONE MARTIN
BUILDERS**



Prices, plans, dimensions, features, specifications, materials, and availability of homes or communities are subject to change without notice or obligation. Illustrations are artists depictions only and may differ from completed improvements. All prices subject to change without notice. Please contact your sales associate before writing an offer.