



**STONE MARTIN
BUILDERS**



**169 Whitner Drive
Hazel Green, AL 35750
Townsend Farm**

\$318,799

Plan: Thrive Kirkland

SQ FT: 2,325

Beds: 3

Baths: 2.5

Garage: 2

ABOUT THIS HOUSE

The "Kirkland" offers 2,325 square feet with 3 bedrooms and 2.5 bathrooms. This unique floorplan showcases the perks of open-concept living. The front of the house boasts a large great room that opens to the dining room. The dining room flows seamlessly into the kitchen, which is complete with an elegant bar top and ample counterspace. The "Kirkland" provides a true upstairs retreat with all bedrooms on this level. The primary retreat is tucked on one side for maximum privacy and includes a separate bathroom with a double vanity and large walk-in closet. Along with the other 2 bedrooms, the upstairs space enters into a loft area that is guaranteed to fit any need you may have for this space.

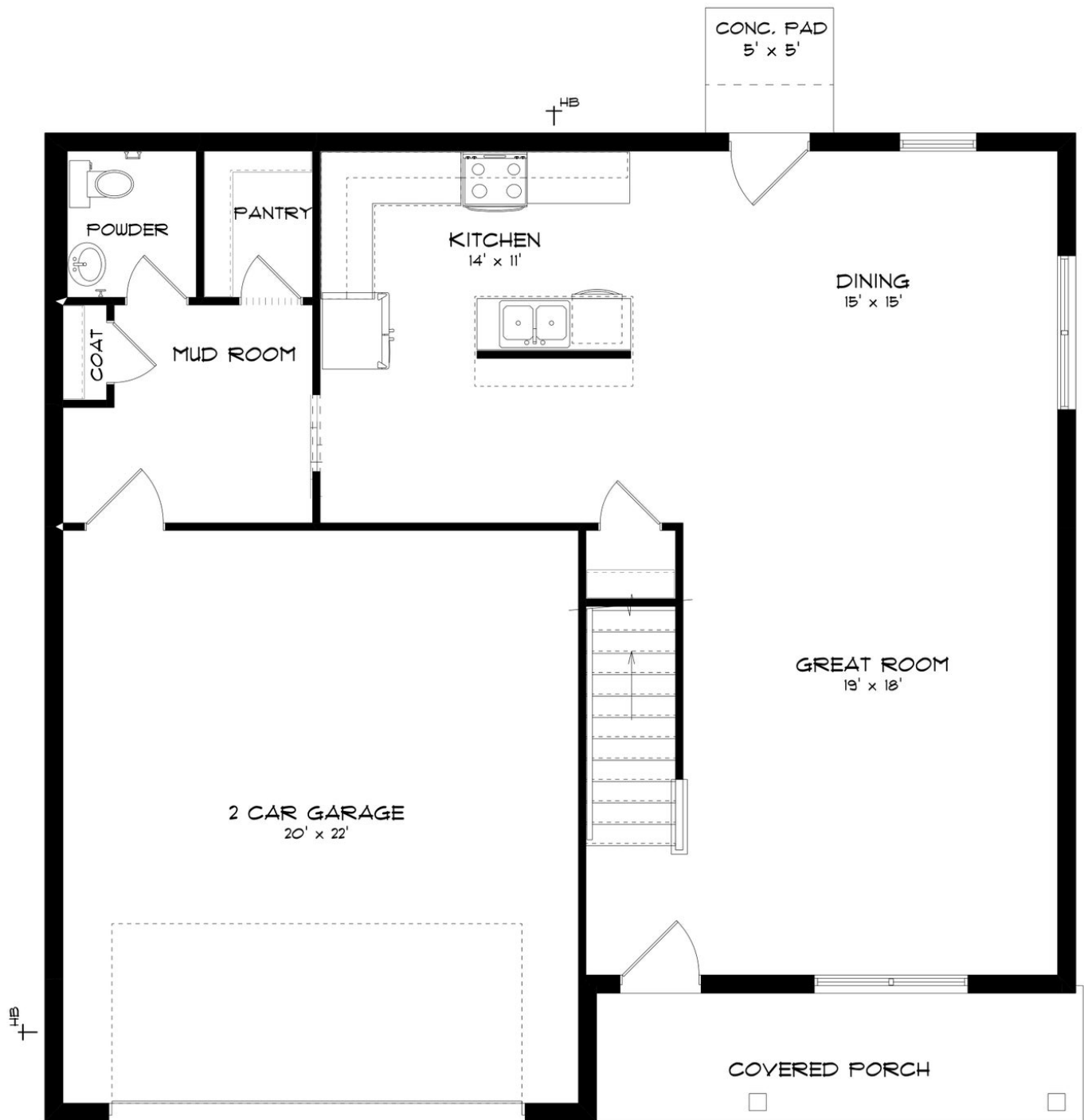
ABOUT TOWNSEND FARM

Stone Martin Builders wants to help you Splash into Savings on a new home! Ask a Sales Professional about our special incentives and new home savings! Nestled in the heart of Hazel Green, Townsend Farm welcomes you to a unique blend of small-town charm and city convenience. Conveniently situated off Highway 231/431, this community offers the perfect balance of tranquility and accessibility. Enjoy the best of both worlds with Townsend Farm. Experience the warmth of a small-town atmosphere while being just moments away from shops, restaurants, and the bustling medical district. It's the ideal location for those seeking a peaceful retreat without sacrificing city conveniences. Embrace the leisurely pace of life at Townsend Farm. Surround yourself with quiet surroundings, indulge in a round of golf at the nearby links, or plan memorable family outings to the renowned Tate Farms. Choose from our well-designed ranch plans, tailored to provide comfort and solace after a long day. Whether you're starting a family or seeking a tranquil haven, Townsend Farm is the perfect community for your new home. Ready to experience the Stone Martin Builders difference? Schedule a visit to Townsend Farm and meet with our knowledgeable Sales Professionals. Explore available homes, envision your future, and embark on the journey to find your dream home in Hazel Green, AL.

Prices, plans, dimensions, features, specifications, materials, and availability of homes or communities are subject to change without notice or obligation. Illustrations are artists depictions only and may differ from completed improvements. All prices subject to change without notice. Please contact your sales associate before writing an offer.



FIRST FLOOR (A)





SECOND FLOOR (A)

