



**STONE MARTIN  
BUILDERS**



**235 Arcadian Way  
Huntsville, AL 35757**

**Clift Farm**

**Plan:** Charlotte B

**SQ FT:** 2,745

**Beds:** 4

**Baths:** 3.5

**Garage:** 2

## ABOUT THIS HOUSE

Explore the Charlotte floorplan, a stunning 4-bed, 4-bath home spanning 2,475 square feet in Madison City Schools district. Embrace the seamless flow of the open-concept layout, connecting the elegant great room, stylish kitchen, and inviting foyer. The luxurious primary suite offers a secluded retreat with a lavish connecting bathroom boasting a double vanity, ample closet space, soaking tub, and shower – a spa-like haven. Upstairs, discover 3 additional bedrooms and 2 full bathrooms, along with a bonus room perfect for a sitting area or game room. Experience sophisticated yet cozy living with distinguished details throughout.

## ABOUT CLIFT FARM

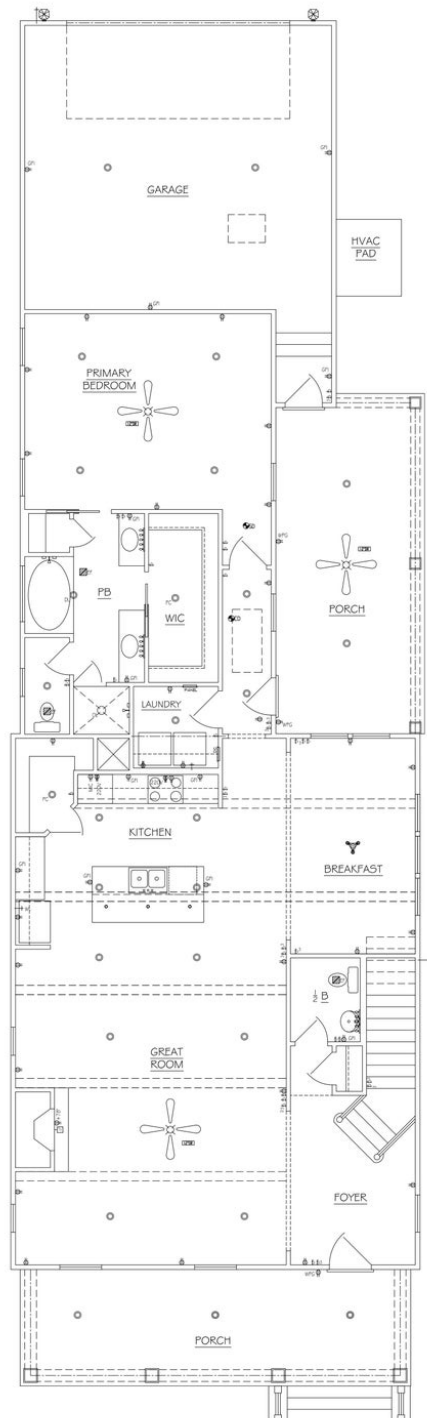
Stone Martin Builders wants to help you Spring into Savings on a new home! Ask a Sales Professional about our special incentives and new home savings! Welcome to Clift Farm, a captivating blend of southern charm and modern living rooted in the century-old Clift family farm. This mixed-use haven offers new construction homes with high-end finishes, each meticulously crafted for unique lifestyles. Immerse yourself in the inviting ambiance of southern style at Clift Farm, where expansive floorplans and meticulous design details redefine the essence of home. Crafted by Stone Martin Builders, our home designs feature gourmet kitchens as functional hubs and stylish focal points—a seamless fusion of form and function. Envision a home that mirrors your style while embracing cutting-edge technology. Experience integrated smart home connectivity, enhancing daily living with modern conveniences. Enjoy the proximity to Downtown Huntsville, ensuring cultural and entertainment delights are within easy reach. Clift Farm is designed for outdoor living, boasting nature trails winding through orchards—a peaceful retreat into the beauty of nature. The clubhouse, with its gym and pool, becomes a central spot for community fun and relaxation. The retail village, anchored by Publix, brings easy convenience with restaurants, event spaces, and workplaces, adding to the lively vibe of North Alabama's sought-after community. Ready to experience the Stone Martin Builders difference? Schedule a vis...

Prices, plans, dimensions, features, specifications, materials, and availability of homes or communities are subject to change without notice or obligation. Illustrations are artists depictions only and may differ from completed improvements. All prices subject to change without notice. Please contact your sales associate before writing an offer.



**STONE MARTIN  
BUILDERS**

## FIRST FLOOR

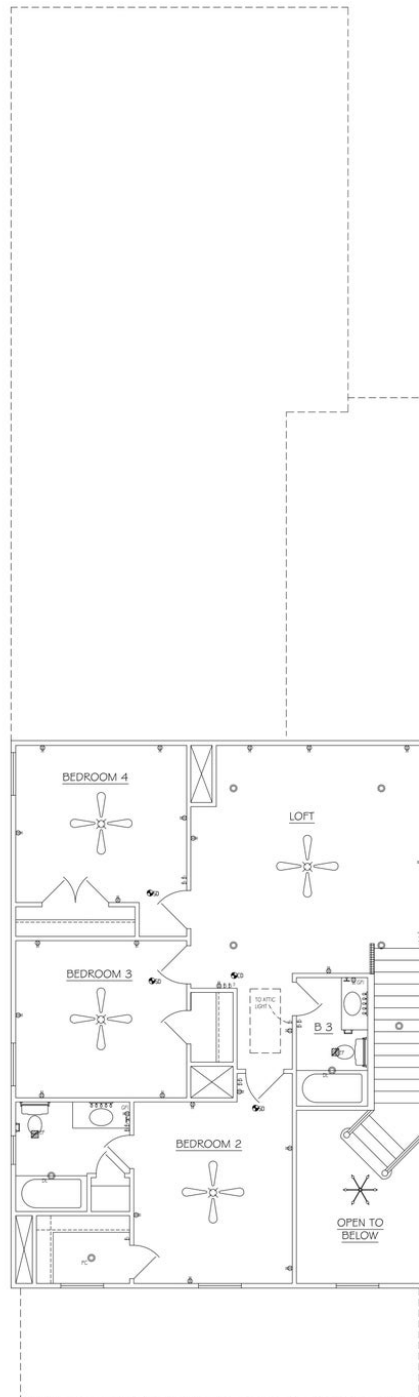


Prices, plans, dimensions, features, specifications, materials, and availability of homes or communities are subject to change without notice or obligation. Illustrations are artists depictions only and may differ from completed improvements. All prices subject to change without notice. Please contact your sales associate before writing an offer.



**STONE MARTIN  
BUILDERS**

## SECOND FLOOR



Prices, plans, dimensions, features, specifications, materials, and availability of homes or communities are subject to change without notice or obligation. Illustrations are artists depictions only and may differ from completed improvements. All prices subject to change without notice. Please contact your sales associate before writing an offer.