



**STONE MARTIN  
BUILDERS**

Contact Our Sales Associate

Sabrina Dennis

256.274.8297 |

sabrinadennis@stonemartinbuilders.com



**315 Clift Home Place Drive  
Huntsville, AL 35757**

**Clift Farm**

**\$581,405**

**Plan:Charlotte B**

**SQ FT:2,741**

**Beds:4**

**Baths:3.5**

**Garage:2**

## ABOUT THIS HOUSE

The Charlotte plan is a 4 bedroom, 3.5 bathroom house that offers a spacious 2,470 square feet. The open-concept layout provides a seamless flow between the elegant great room, stylish kitchen, and aesthetic foyer. The luxurious master suite provides a secluded retreat complete with a lavish connecting bathroom. Featuring a double vanity, walk-in closet, soaking tub, and walk-in shower, the master bath feels more like a spa. The plan is completed with 3 additional bedrooms and 2 full bathrooms on the second floor. The bonus room accommodates large furniture for an additional sitting area or game room. The distinguished details highlighted in this plan create a sophisticated, yet cozy feel.

...Read More Online

## ABOUT CLIFT FARM

Clift Farm is a southern style, mixed-use community built on the success of a century-old farm, belonging to the Clift family. The neighborhood offers a wide variety of residential housing to fit every lifestyle with high end finishes. Clift Farm will have outdoor living featuring nature trails with orchards, a clubhouse with an exercise gym and pool, a retail village anchored by Publix, restaurants, event spaces and workplaces located in one of North Alabama's most desired communities.

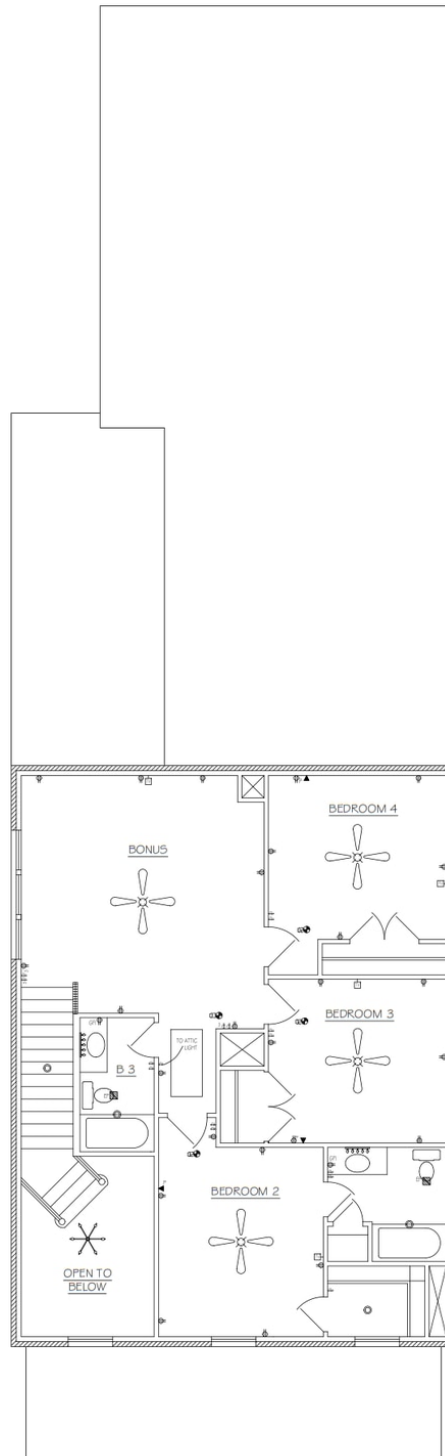
...Read More Online

Prices, plans, dimensions, features, specifications, materials, and availability of homes or communities are subject to change without notice or obligation. Illustrations are artists depictions only and may differ from completed improvements. All prices subject to change without notice. Please contact your sales associate before writing an offer.



**STONE MARTIN**  
BUILDERS

Contact Our Sales Associate  
Sabrina Dennis  
256.274.8297 |  
sabinadennis@stonemartinbuilders.com



Prices, plans, dimensions, features, specifications, materials, and availability of homes or communities are subject to change without notice or obligation. Illustrations are artists depictions only and may differ from completed improvements. All prices subject to change without notice. Please contact your sales associate before writing an offer.



**STONE MARTIN  
BUILDERS**

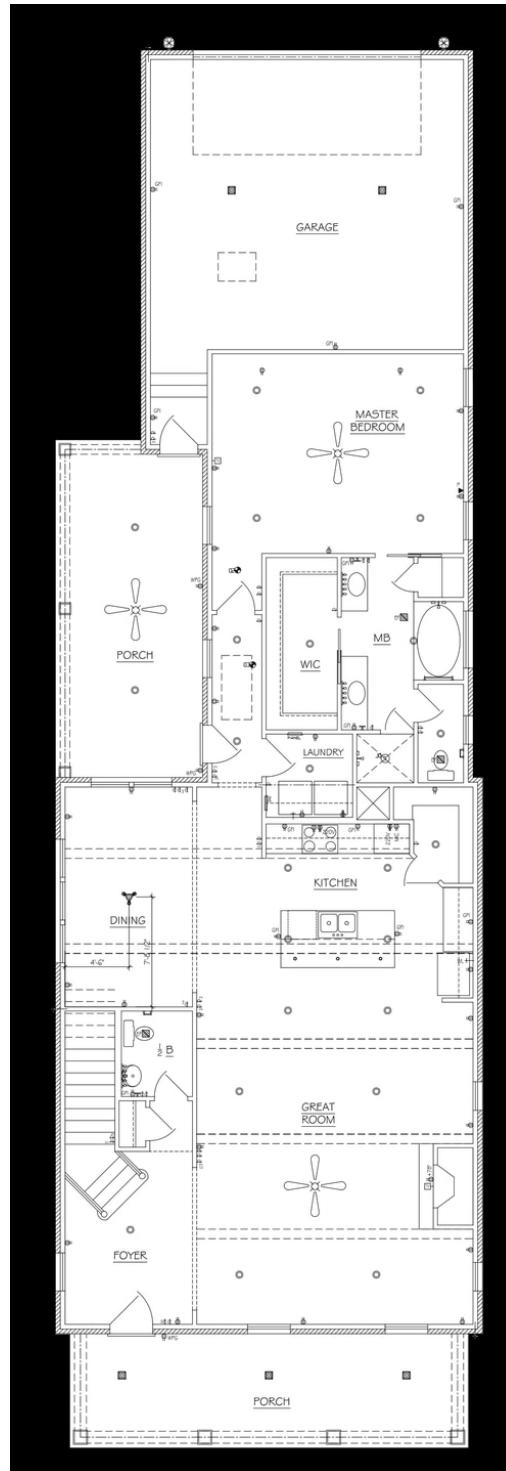
Contact Our Sales Associate

Sabrina Dennis

256.274.8297 |

sabrinadennis@stonemartinbuilders.com

## FIRST FLOOR



Prices, plans, dimensions, features, specifications, materials, and availability of homes or communities are subject to change without notice or obligation. Illustrations are artists depictions only and may differ from completed improvements. All prices subject to change without notice. Please contact your sales associate before writing an offer.



**STONE MARTIN**  
BUILDERS

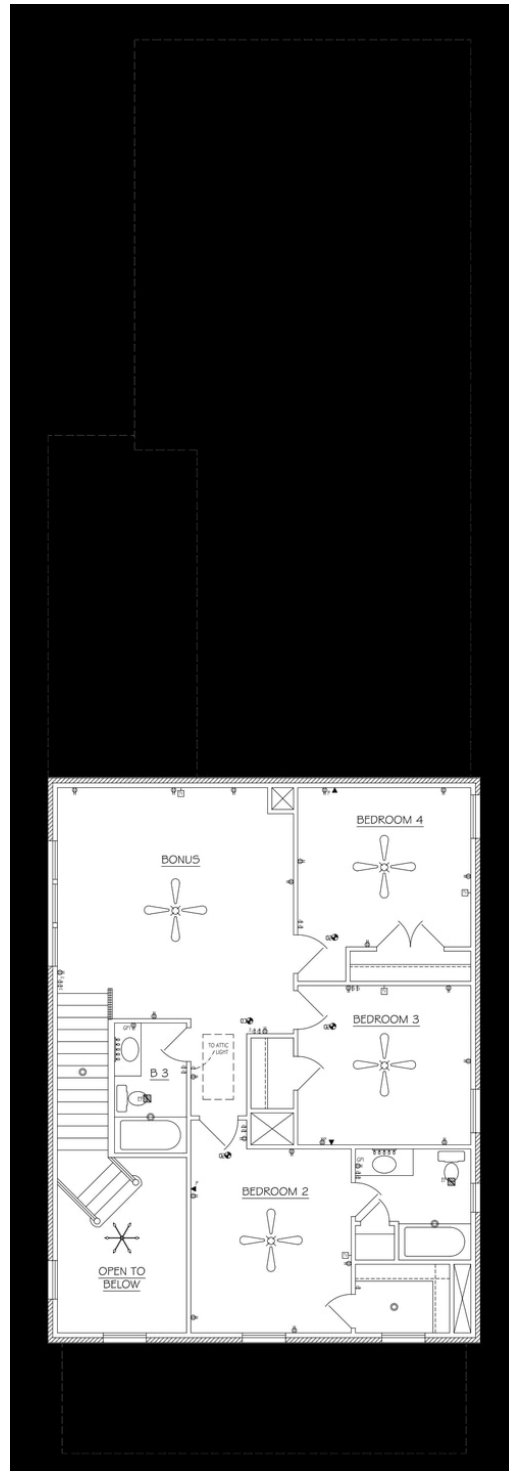
Contact Our Sales Associate

Sabrina Dennis

256.274.8297 |

[sabrinadennis@stonemartinbuilders.com](mailto:sabrinadennis@stonemartinbuilders.com)

## SECOND FLOOR



Prices, plans, dimensions, features, specifications, materials, and availability of homes or communities are subject to change without notice or obligation. Illustrations are artists depictions only and may differ from completed improvements. All prices subject to change without notice. Please contact your sales associate before writing an offer.