



**STONE MARTIN
BUILDERS**



**11369 Waterman Lane
Huntsville, AL 35756
Nature's Trail**

\$419,581

Plan: Overton

SQ FT: 2,682

Beds: 4

Baths: 2.5

Garage: 2

ABOUT THIS HOUSE

The "Overton" is a 1 ½ story open floorplan with ample possibilities. This four bedroom, two and a half bath plan with bonus room begins with a refined foyer entry way that opens into a roomy living area with a vaulted ceiling. Next experience the open kitchen with large center island and adjoining dining room. The kitchen offers built in appliances, granite countertops and an expanded pantry. The primary quarters provide a large bedroom and walk in closet as well as a luxurious bathroom complete with a double granite vanity, garden/soaking tub, and tiled shower with glass door. The bonus room located upstairs includes a half bath and has plenty of possibilities as an entertainment area or extra bedroom. This layout truly is a must see!

ABOUT NATURE'S TRAIL

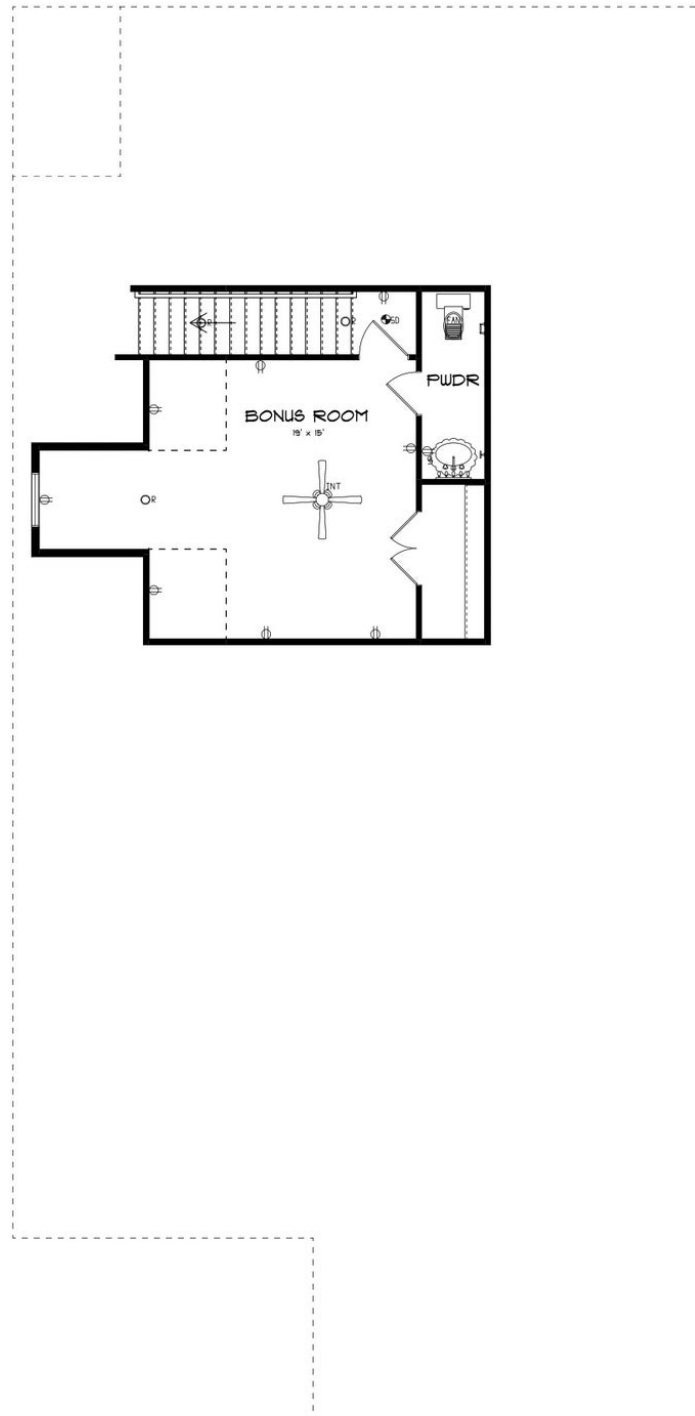
Stone Martin Builders wants to help you Spring into Savings on a new home! Ask a Sales Professional about our special incentives and new home savings! Welcome to Nature's Trail, an idyllic retreat nestled in a serene, countryside setting. Escape the hustle and bustle and discover the tranquility of our community, where neighbors become friends and shared green spaces foster a strong sense of community. Experience quality construction that stands the test of time, paired with integrated smart home technology for modern living. From gourmet kitchens to designer-selected finishes, every detail is meticulously designed to elevate your lifestyle. Enjoy the convenience of living in a location with easy access to I-565, I-65, and Highway 72, making errands and commuting a breeze. Nature's Trail offers the perfect balance of peaceful living with convenient amenities, making it an ideal choice for those seeking a retreat from the city without sacrificing convenience. Explore the allure of new construction homes in a community designed for modern living. Ready to experience the Stone Martin Builders difference? Schedule a visit to Nature's Trail on the Flint and meet with our knowledgeable Sales Professionals. Explore available homes and embark on the journey to find your personal oasis in Huntsville, AL.

Prices, plans, dimensions, features, specifications, materials, and availability of homes or communities are subject to change without notice or obligation. Illustrations are artists depictions only and may differ from completed improvements. All prices subject to change without notice. Please contact your sales associate before writing an offer.



STONE MARTIN
BUILDERS

SECOND FLOOR



Prices, plans, dimensions, features, specifications, materials, and availability of homes or communities are subject to change without notice or obligation. Illustrations are artists depictions only and may differ from completed improvements. All prices subject to change without notice. Please contact your sales associate before writing an offer.