



**STONE MARTIN
BUILDERS**



**11485 Waterman Lane
Huntsville, AL 35756
Nature's Trail**

\$477,817

Plan: Shackleford II

SQ FT: 2,909

Beds: 4

Baths: 4.5

Garage: 3

ABOUT THIS HOUSE

"Shackleford II" is fabulously designed with 4 bedrooms and 4.5 baths created for comfortable, spacious living. The focus of the design is the great room with vaulted ceilings and a fireplace, the central hub of the home. Tucked in the back, the large primary bedroom is an assured peaceful retreat. Three additional bedrooms complete this floor plan, all with copious closet space with two full bathrooms. The rear covered patio provides ample shade and a peaceful setting. The heart of the kitchen, the granite island, provides a fantastic space for entertainment and cookery. The kitchen opens to the dining, creating a flawless space for hosting. This well laid floor plan can accommodate the space needed for a multi-generational housing because of the in-suite sleeping area for parents or children moving back home. The plan is rounded out with ample storage and a 3-car garage. The 2nd floor is home to a large bonus room featuring a full bath and walk-in-closet.

ABOUT NATURE'S TRAIL

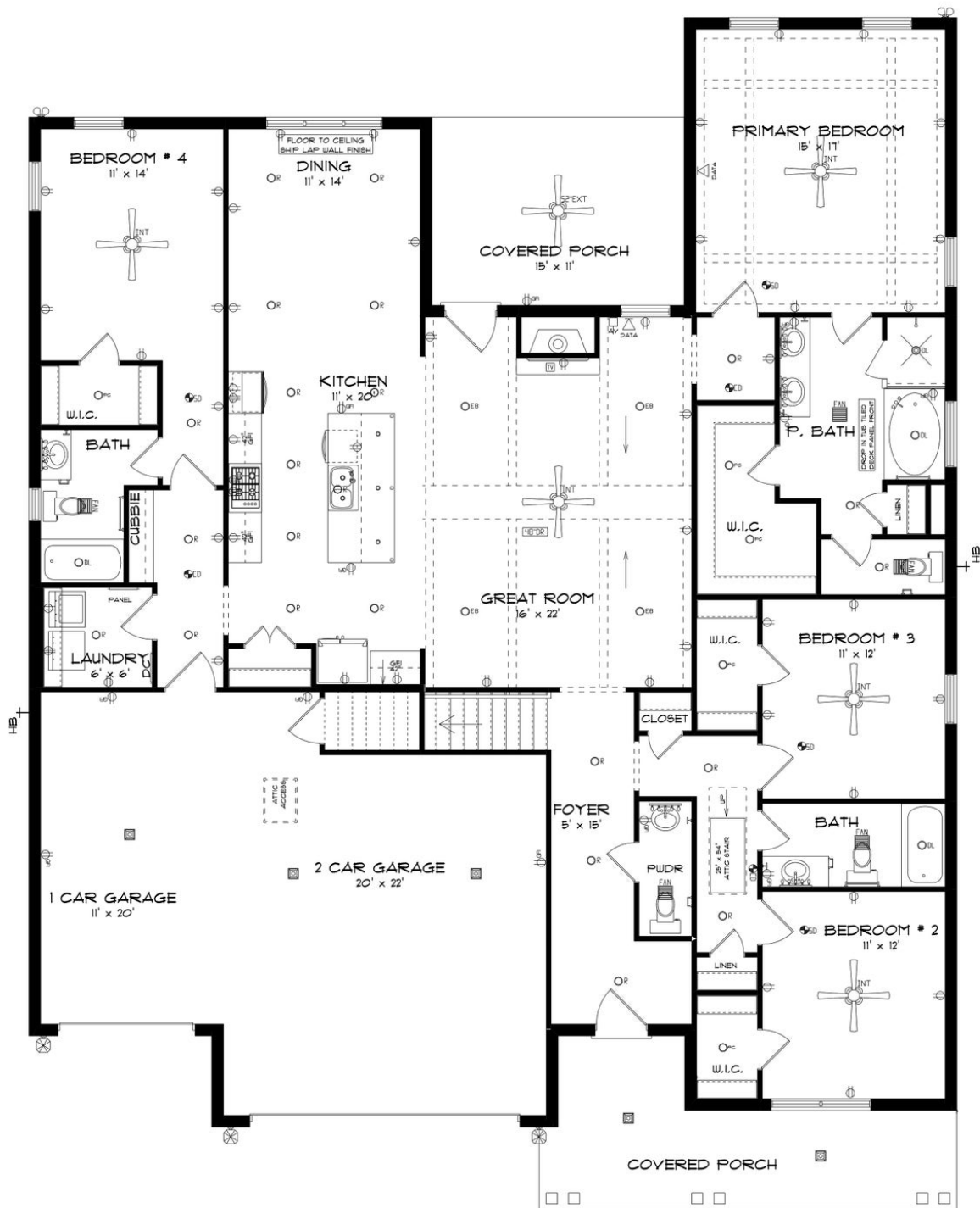
Stone Martin Builders wants to help you Spring into Savings on a new home! Ask a Sales Professional about our special incentives and new home savings! Welcome to Nature's Trail, an idyllic retreat nestled in a serene, countryside setting. Escape the hustle and bustle and discover the tranquility of our community, where neighbors become friends and shared green spaces foster a strong sense of community. Experience quality construction that stands the test of time, paired with integrated smart home technology for modern living. From gourmet kitchens to designer-selected finishes, every detail is meticulously designed to elevate your lifestyle. Enjoy the convenience of living in a location with easy access to I-565, I-65, and Highway 72, making errands and commuting a breeze. Nature's Trail offers the perfect balance of peaceful living with convenient amenities, making it an ideal choice for those seeking a retreat from the city without sacrificing convenience. Explore the allure of new construction homes in a community designed for modern living. Ready to experience the Stone Martin Builders difference? Schedule a visit to Nature's Trail on the Flint and meet with our knowledgeable Sales Professionals. Explore available homes and embark on the journey to find your personal oasis in Huntsville, AL.

Prices, plans, dimensions, features, specifications, materials, and availability of homes or communities are subject to change without notice or obligation. Illustrations are artists depictions only and may differ from completed improvements. All prices subject to change without notice. Please contact your sales associate before writing an offer.



**STONE MARTIN
BUILDERS**

FIRST FLOOR

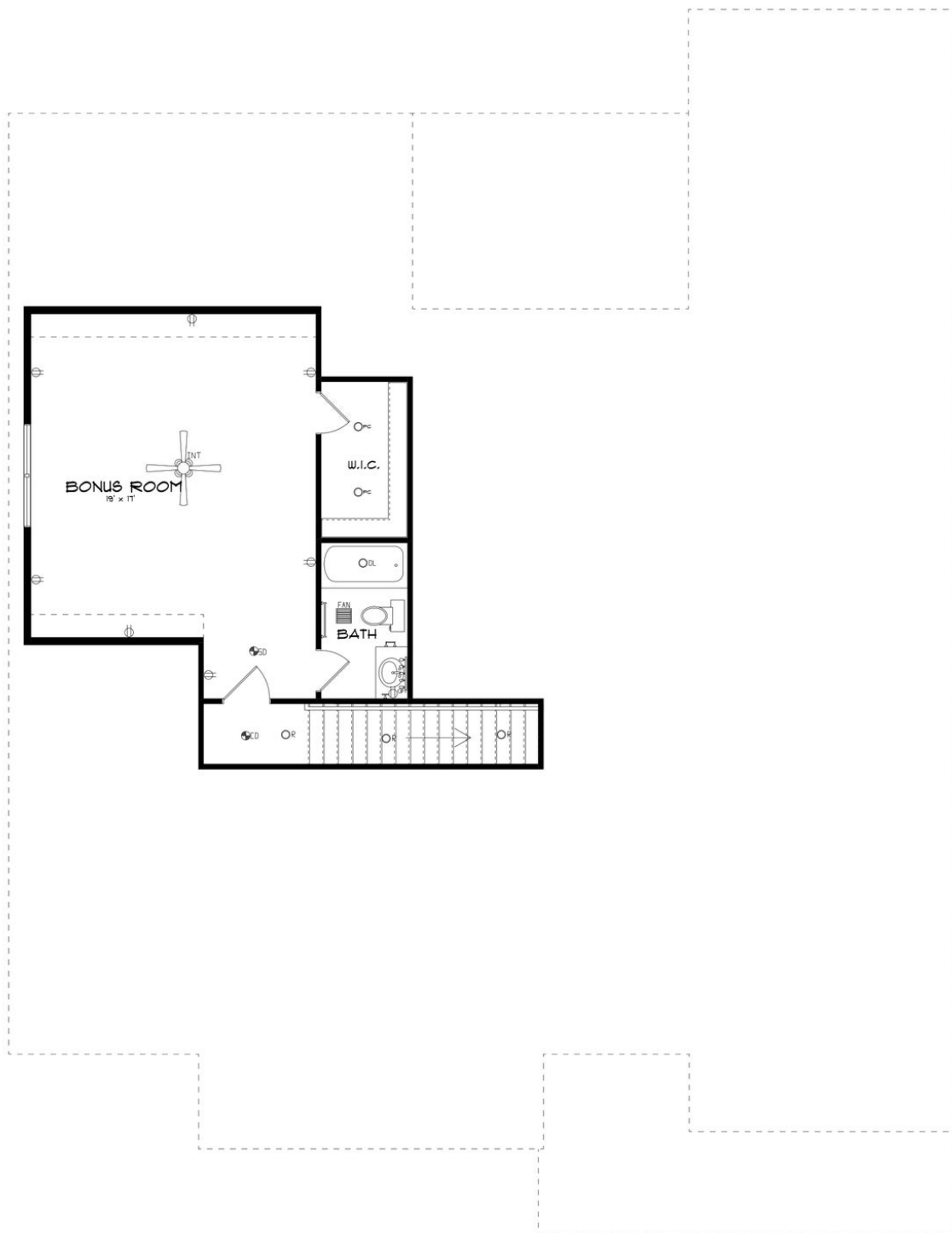


Prices, plans, dimensions, features, specifications, materials, and availability of homes or communities are subject to change without notice or obligation. Illustrations are artists depictions only and may differ from completed improvements. All prices subject to change without notice. Please contact your sales associate before writing an offer.



**STONE MARTIN
BUILDERS**

SECOND FLOOR



Prices, plans, dimensions, features, specifications, materials, and availability of homes or communities are subject to change without notice or obligation. Illustrations are artists depictions only and may differ from completed improvements. All prices subject to change without notice. Please contact your sales associate before writing an offer.