



**STONE MARTIN
BUILDERS**



**12901 Monte Vedra Road
Huntsville, AL 35803
The Preserve at Inspiration**

Plan: Highland
SQ FT: 4,745
Beds: 5
Baths: 3.5
Garage: 3

ABOUT THIS HOUSE

The sky is the limit in the "Highland" plan sketched for those who insist on a higher standard of living. A space for every imaginable use, this house speaks volume and comfort with a kitchen featuring a gigantic 8'x 4' granite island that opens to family/great room area. Oversized study, located on the first level provides space for a home office, nursery, or a quiet place for reading or simply relaxing. Owner's quarters boasts room for endless furniture and hails a huge walk-in closet. Separate the family to the second floor where there's a whole new dimension with bedrooms and baths that are endless as well as a highly usable loft area. Protect the interior of the house by kicking off the shoes in the convenient mud room off the garage. Ultimate price, use of space, and total utilization define this plan.

ABOUT THE PRESERVE AT INSPIRATION

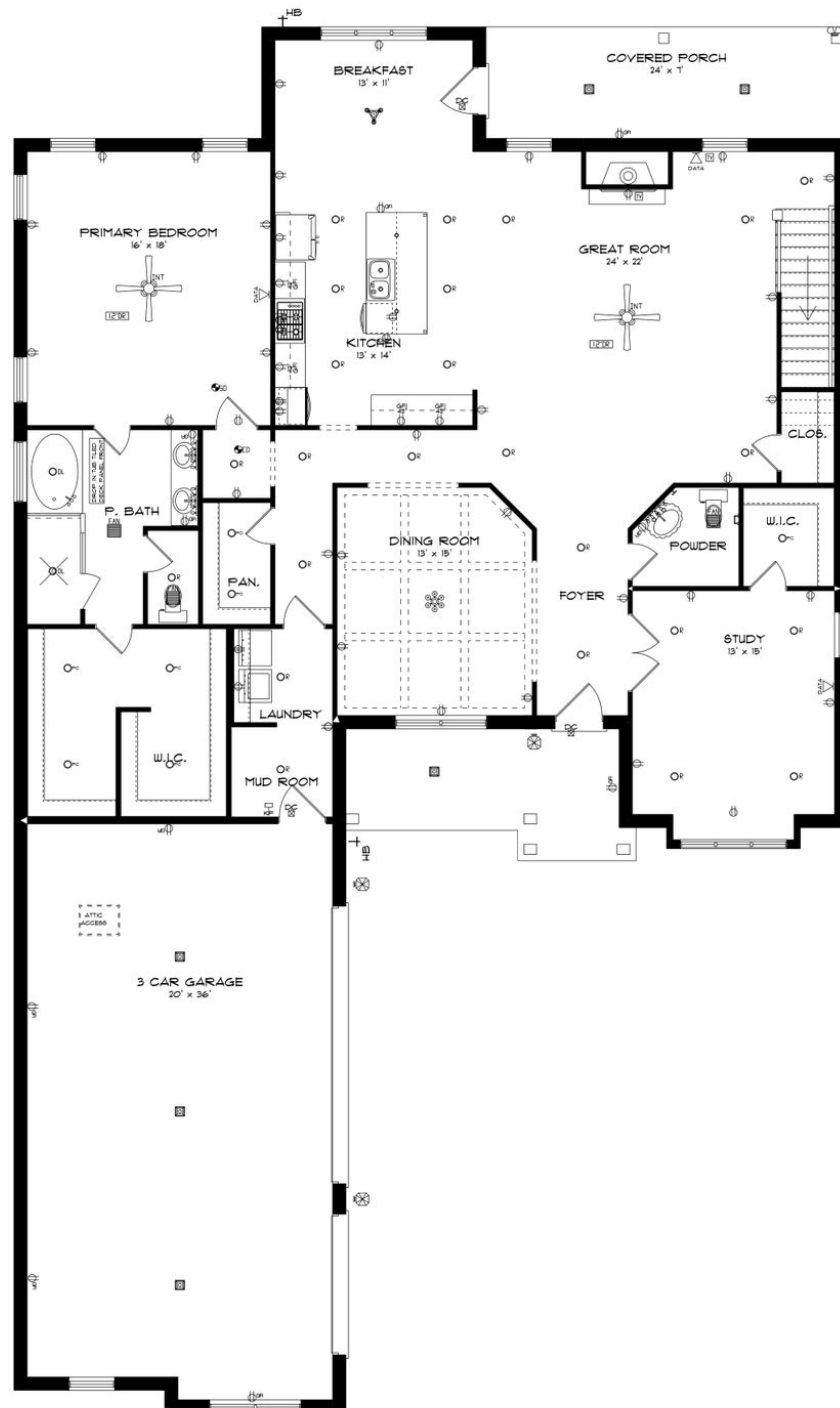
Stone Martin Builders wants to help you Spring into Savings on a new home! Ask a Sales Professional about our special incentives and new home savings! Welcome to The Preserve at Inspiration, a captivating community nestled in Southeast Huntsville atop Green Mountain in Owens Cross Roads, AL. This breathtaking enclave of new construction homes promises a nature lover's paradise within the Huntsville City Limits, offering unparalleled access to the Madison County Nature Trail and stunning Bluff Views. Discover spacious floorplans and thoughtful design details in every home, crafted by Stone Martin Builders to exceed your expectations. From gourmet kitchens to integrated smart home connectivity, our new construction homes are designed with your comfort and convenience in mind. Immerse yourself in the beauty of heavily wooded homesites and abundant wildlife, creating a serene backdrop for everyday living. Located just 2 miles from Publix and conveniently close to schools and workplaces, The Preserve at Inspiration offers the perfect balance of tranquility and convenience. Experience resort-style amenities including The Lodge clubhouse, swimming, tennis, basketball, and a fitness center—all set amidst the scenic beauty of Green Mountain. Whether you're seeking outdoor adventure or relaxation, The Preserve at Inspiration has something for everyone. Ready to experience the Stone Martin difference? Discover the epitome of luxury living in Owens Cross Roads, AL, at The Preserve at In...

Prices, plans, dimensions, features, specifications, materials, and availability of homes or communities are subject to change without notice or obligation. Illustrations are artists depictions only and may differ from completed improvements. All prices subject to change without notice. Please contact your sales associate before writing an offer.



**STONE MARTIN
BUILDERS**

FIRST FLOOR



Prices, plans, dimensions, features, specifications, materials, and availability of homes or communities are subject to change without notice or obligation. Illustrations are artists depictions only and may differ from completed improvements. All prices subject to change without notice. Please contact your sales associate before writing an offer.



This floor plan depicts a 5-bedroom residence with a loft, multiple bathrooms, and several walk-in closets. The layout is as follows:

- Bedroom # 5:** Located at the top center, measuring 13' x 18', featuring a central ceiling fan and a closet.
- Loft:** Located at the top right, measuring 20' x 18', with a central ceiling fan and access to a staircase.
- Bedroom # 4:** Located on the top left, measuring 16' x 18', with a central ceiling fan and a closet.
- Bedroom # 3:** Located in the center, measuring 11' x 15', with a central ceiling fan and a closet.
- Bedroom # 2:** Located at the bottom right, measuring 13' x 14', with a central ceiling fan and a closet.
- Bathrooms:** There are four full bathrooms. One is adjacent to Bedroom # 4, another to Bedroom # 3, and two are located near Bedroom # 2. Each bathroom includes a bathtub, toilet, and sink. A central utility area (28' x 14' ATTIC STAIR) is also shown.
- Walk-in Closets (W.I.C.):** There are four walk-in closets, one in each bedroom and one in the loft area.
- Other Features:** The plan includes various closets, a central utility area, and a staircase leading to the loft.

Prices, plans, dimensions, features, specifications, materials, and availability of homes or communities are subject to change without notice or obligation. Illustrations are artists depictions only and may differ from completed improvements. All prices subject to change without notice. Please contact your sales associate before writing an offer.