



**STONE MARTIN
BUILDERS**



**12913 Monte Verda Road
Huntsville, AL 35763
The Preserve at Inspiration**

Plan: Morningside II
SQ FT: 3,490
Beds: 4
Baths: 4.0
Garage: 3

ABOUT THIS HOUSE

The Morningside II excels in space planning, seamlessly blending sought-after features for an exceptional home. Enter through the inviting front porch to a vast foyer leading to a spacious great room with a striking corner fireplace and ample natural light. The adjacent large kitchen boasts an island with a wine rack and open bookcase, a functional layout, and a generous pantry. A flex room off the kitchen can serve as a dining area or study, adapting to your family's needs. The main level also features a lavish primary suite with a sitting room, offering a tranquil retreat. The primary bath is luxurious, and a roomy walk-in closet adds convenience. Three additional bedrooms with walk-in closets and two full bathrooms are accessible from the main entryway, complete with a linen closet for extra storage. The upper level hosts a versatile bonus room with a full bath and a walk-in closet, providing endless possibilities. Practical elements include a mudroom connected to the side-entry garage, streamlining daily routines, and a spacious covered patio with an exterior fireplace at the rear, perfect for outdoor enjoyment and gatherings.

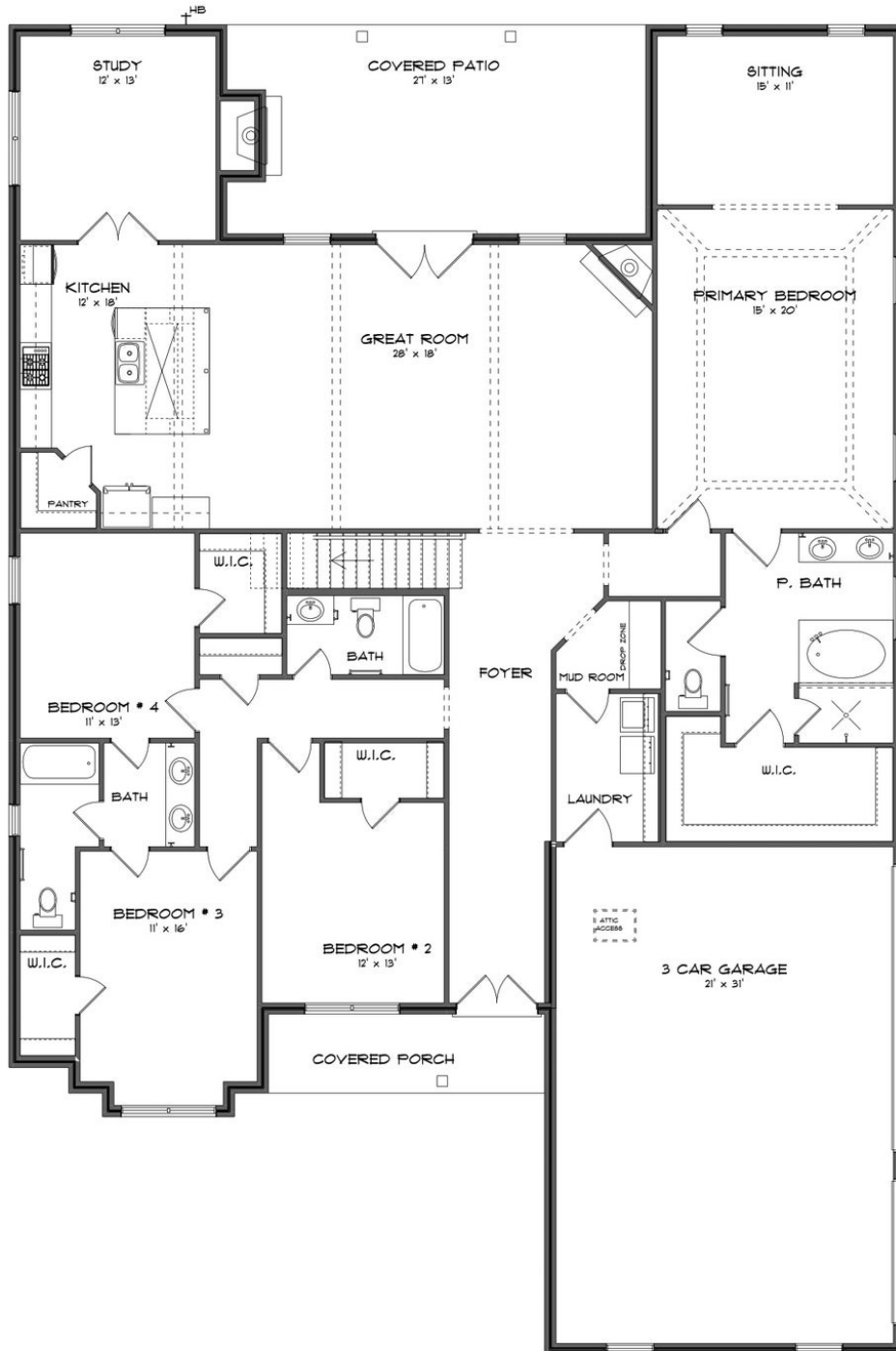
ABOUT THE PRESERVE AT INSPIRATION

Stone Martin Builders wants to help you Splash into Savings on a new home! Ask a Sales Professional about our special incentives and new home savings! Welcome to The Preserve at Inspiration, a captivating community nestled in Southeast Huntsville atop Green Mountain in Owens Cross Roads, AL. This breathtaking enclave of new construction homes promises a nature lover's paradise within the Huntsville City Limits, offering unparalleled access to the Madison County Nature Trail and stunning Bluff Views. Discover spacious floorplans and thoughtful design details in every home, crafted by Stone Martin Builders to exceed your expectations. From gourmet kitchens to integrated smart home connectivity, our new construction homes are designed with your comfort and convenience in mind. Immerse yourself in the beauty of heavily wooded homesites and abundant wildlife, creating a serene backdrop for everyday living. Located just 2 miles from Publix and conveniently close to schools and workplaces, The Preserve at Inspiration offers the perfect balance of tranquility and convenience. Experience resort-style amenities including The Lodge clubhouse, swimming, tennis, basketball, and a fitness center—all set amidst the scenic beauty of Green Mountain. Whether you're seeking outdoor adventure or relaxation, The Preserve at Inspiration has something for everyone. Ready to experience the Stone Martin difference? Discover the epitome of luxury living in Owens Cross Roads, AL, at The Preserve ...

Prices, plans, dimensions, features, specifications, materials, and availability of homes or communities are subject to change without notice or obligation. Illustrations are artists depictions only and may differ from completed improvements. All prices subject to change without notice. Please contact your sales associate before writing an offer.



FIRST FLOOR (J-3 CAR)





SECOND FLOOR (J-3 CAR)

