



**STONE MARTIN
BUILDERS**



**66 Natures Ridge Way
Huntsville, AL 35803
The Preserve at Inspiration**

\$750,468

Plan: Dogwood II

SQ FT: 3,706

Beds: 4

Baths: 4.0

Garage: 3

ABOUT THIS HOUSE

This plan is sure to steal the show, just like a dogwood tree in full bloom. The long front porch is a perfect primer for all of the beauty housed in these four walls. The entryway is flanked with a study on one side and a formal dining on the other, and then you are lead directly into the large kitchen. An abundance of storage, both in cabinets and in the pantry, coupled with the large eat in island make this space a chef's dream. The kitchen flows seamlessly into the large great room with a corner fireplace and wall of windows looking out onto the covered porch on the rear of the home. Off to one side of the main living area you'll find the primary suite that leaves nothing to be desired: tray ceilings, soaking bathtub, roomy shower, and one of the largest walk-in closets we have ever laid eyes on. The opposite side of the main living area is home to three additional bedrooms and two full bathrooms, plus a drop zone and laundry room that lead into the garage. On the 2nd floor there is a large Bonus Room with a sitting area and full bath. What more could you need in a home?!

ABOUT THE PRESERVE AT INSPIRATION

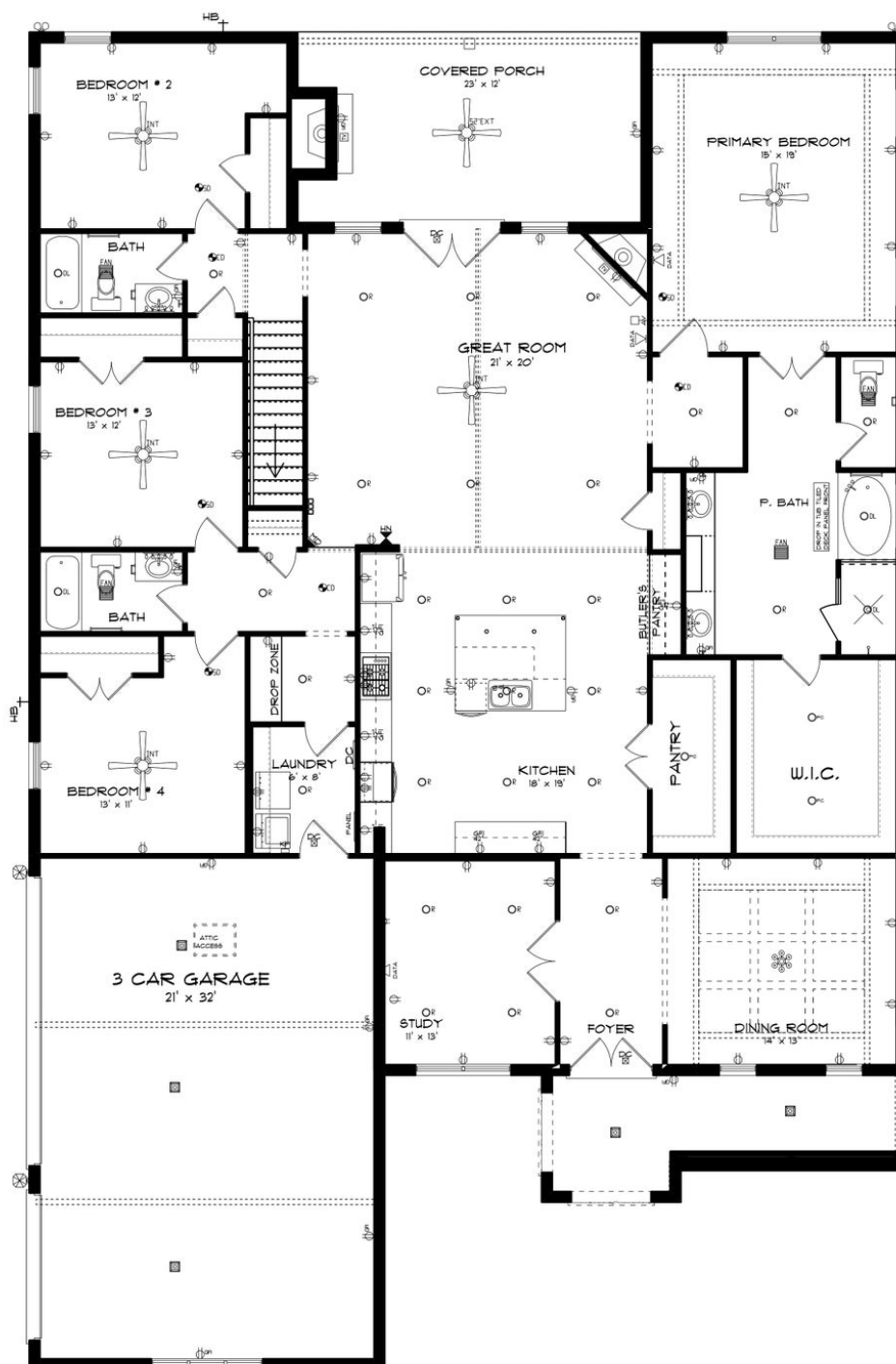
Stone Martin Builders wants to help you Spring into Savings on a new home! Ask a Sales Professional about our special incentives and new home savings! Welcome to The Preserve at Inspiration, a captivating community nestled in Southeast Huntsville atop Green Mountain in Owens Cross Roads, AL. This breathtaking enclave of new construction homes promises a nature lover's paradise within the Huntsville City Limits, offering unparalleled access to the Madison County Nature Trail and stunning Bluff Views. Discover spacious floorplans and thoughtful design details in every home, crafted by Stone Martin Builders to exceed your expectations. From gourmet kitchens to integrated smart home connectivity, our new construction homes are designed with your comfort and convenience in mind. Immerse yourself in the beauty of heavily wooded homesites and abundant wildlife, creating a serene backdrop for everyday living. Located just 2 miles from Publix and conveniently close to schools and workplaces, The Preserve at Inspiration offers the perfect balance of tranquility and convenience. Experience resort-style amenities including The Lodge clubhouse, swimming, tennis, basketball, and a fitness center—all set amidst the scenic beauty of Green Mountain. Whether you're seeking outdoor adventure or relaxation, The Preserve at Inspiration has something for everyone. Ready to experience the Stone Martin difference? Discover the epitome of luxury living in Owens Cross Roads, AL, at The Preserve at In...

Prices, plans, dimensions, features, specifications, materials, and availability of homes or communities are subject to change without notice or obligation. Illustrations are artists depictions only and may differ from completed improvements. All prices subject to change without notice. Please contact your sales associate before writing an offer.



**STONE MARTIN
BUILDERS**

FIRST FLOOR

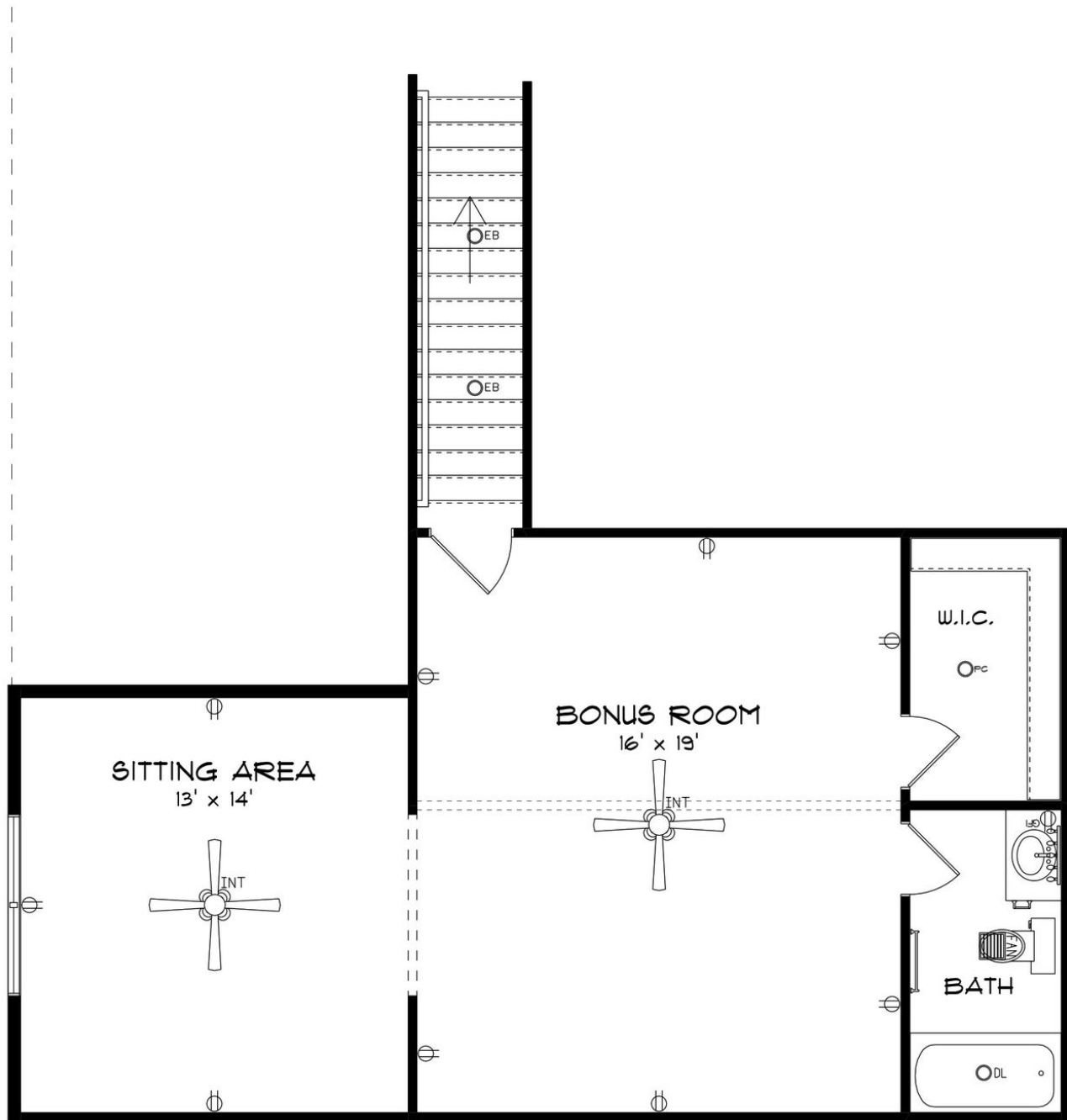


Prices, plans, dimensions, features, specifications, materials, and availability of homes or communities are subject to change without notice or obligation. Illustrations are artists depictions only and may differ from completed improvements. All prices subject to change without notice. Please contact your sales associate before writing an offer.



**STONE MARTIN
BUILDERS**

SECOND FLOOR



Prices, plans, dimensions, features, specifications, materials, and availability of homes or communities are subject to change without notice or obligation. Illustrations are artists depictions only and may differ from completed improvements. All prices subject to change without notice. Please contact your sales associate before writing an offer.