



**STONE MARTIN  
BUILDERS**



**100 Gateshead Circle  
Madison, AL 35758**

**Anderson Place**

**Plan:** Mayfair

**SQ FT:** 3,670

**Beds:** 5

**Baths:** 4.5

**Garage:** 2

## **ABOUT THIS HOUSE**

Discover the charm of the "Mayfair" plan—a home thoughtfully crafted for comfortable living in every way. From the inviting grand entrance with a 2-story foyer to the practical open floorplan, this home seamlessly combines grandeur with functionality. Entertain effortlessly with a stylish dining room, a granite-topped butler's pantry, and a spacious kitchen serving island. Bedroom needs are met with a primary suite and a guest suite on the main level. Enjoy a primary suite that's both spacious and cozy, ensuring privacy and meeting various lifestyle demands. Upstairs, find three generously sized bedrooms, a flexible loft area, and practical use of space. In every aspect, this plan promises a fabulous living experience that won't disappoint. Get ready to feel right at home with the "Mayfair" plan!

## **ABOUT ANDERSON PLACE**

Stone Martin Builders wants to help you Splash into Savings on a new home! Ask a Sales Professional about our special incentives and new home savings! Discover the unparalleled allure of Anderson Place, where your dream home awaits amidst a vibrant community. With only a few lots left, now is the time to secure your slice of paradise. Conveniently situated near I-565 and Hwy 72, Anderson Place offers easy access to all that Huntsville has to offer. Adjacent to Bridge Street Town Center and Redstone Arsenal, this new home community provides a seamless blend of urban convenience and suburban tranquility with Downtown Huntsville just minutes away. Embrace the freedom to design your ideal living space with our spacious floorplans and thoughtful design details. From gourmet kitchens to integrated smart home connectivity, every aspect of your home is crafted with the utmost care and precision. Experience the pinnacle of high-quality construction and energy efficiency, ensuring a home that stands the test of time. With large lots accommodating both ranch and two-story floorplans, Anderson Place caters to your unique lifestyle needs in the highly sought-after Madison City School district. Ready to experience the Stone Martin difference? Schedule a visit to Anderson Place, meet with our knowledgeable Sales Professionals, and explore available homes. Envision your future and embark on the journey to find your dream home in Huntsville, AL.

Prices, plans, dimensions, features, specifications, materials, and availability of homes or communities are subject to change without notice or obligation. Illustrations are artists depictions only and may differ from completed improvements. All prices subject to change without notice. Please contact your sales associate before writing an offer.



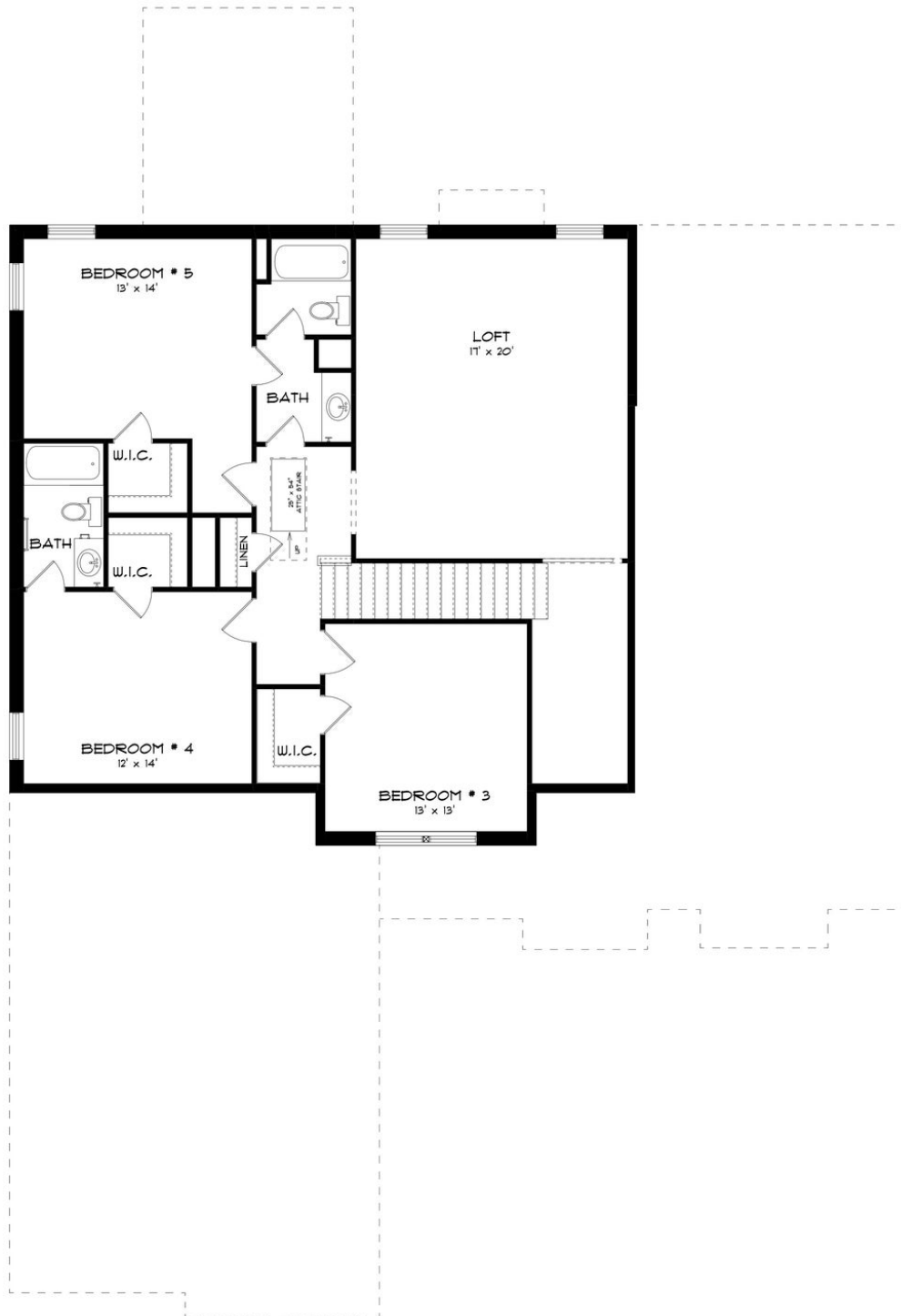
## FIRST FLOOR (H)



Prices, plans, dimensions, features, specifications, materials, and availability of homes or communities are subject to change without notice or obligation. Illustrations are artists depictions only and may differ from completed improvements. All prices subject to change without notice. Please contact your sales associate before writing an offer.



## SECOND FLOOR (H)



Prices, plans, dimensions, features, specifications, materials, and availability of homes or communities are subject to change without notice or obligation. Illustrations are artists depictions only and may differ from completed improvements. All prices subject to change without notice. Please contact your sales associate before writing an offer.