



**STONE MARTIN
BUILDERS**

Contact Our Sales Associate

Tiesha Simmons

256-808-2250 |

susanlaughlin@stonemartinbuilders.com



**307 Clift Home Place Dr
Madison, AL 35757**

Clift Farm

\$551,404

Plan: Magnolia G

SQ FT: 2,697

Beds: 4

Baths: 3.5

Garage: 2

ABOUT THIS HOUSE

The Magnolia C plan provides a seamless indoor-outdoor living space. This plan was designed as a porch-lover's paradise, with two porches that are easily accessible from the kitchen and great room. This 4 bedroom 3.5 bath design offers space for the whole family to enjoy. The serene sitting area in the master bedroom allows a quiet escape from the stresses of everyday life. The second floor features room for all your guests. With 3 bedrooms and a bonus room, the Magnolia provides ample space for the whole family. The open kitchen concept allows for constant communication from the kitchen, dining area, and great room. The Magnolia features spaces the whole family will love!

[...Read More Online](#)

ABOUT CLIFT FARM

Clift Farm is a southern style, mixed-use community built on the success of a century-old farm, belonging to the Clift family. The neighborhood offers a wide variety of residential housing to fit every lifestyle with high end finishes. Clift Farm will have outdoor living featuring nature trails with orchards, a clubhouse with an exercise gym and pool, a retail village anchored by Publix, restaurants, event spaces and workplaces located in one of North Alabama's most desired communities!

[...Read More Online](#)

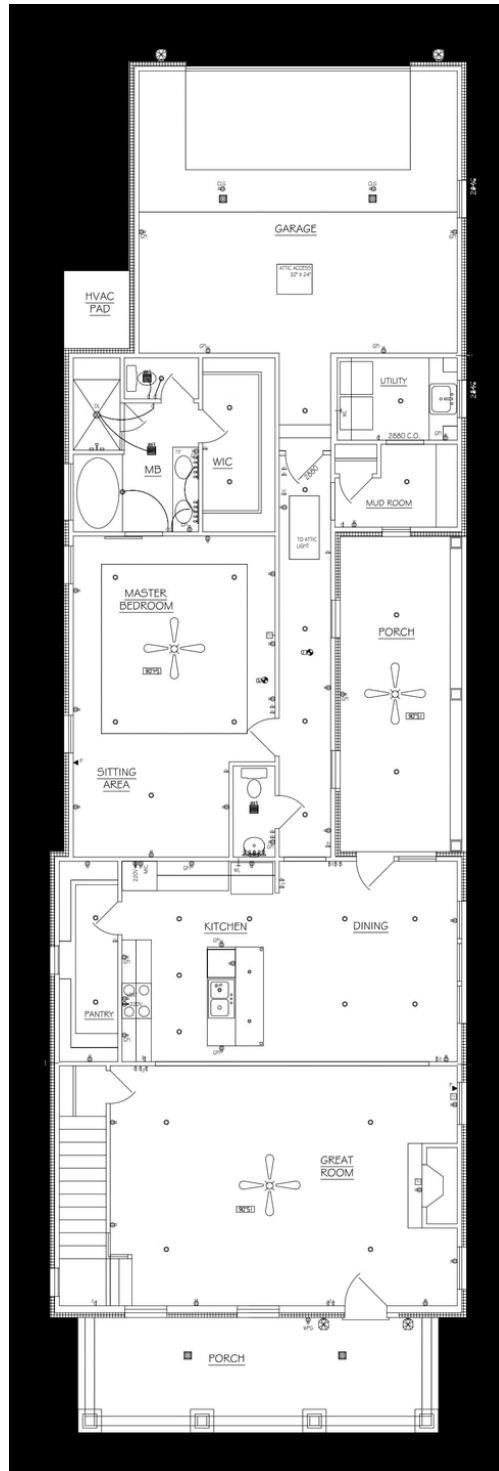
Prices, plans, dimensions, features, specifications, materials, and availability of homes or communities are subject to change without notice or obligation. Illustrations are artists depictions only and may differ from completed improvements. All prices subject to change without notice. Please contact your sales associate before writing an offer.



**STONE MARTIN
BUILDERS**

Contact Our Sales Associate
Tiesha Simmons
256-808-2250 |
susanlaughlin@stonemartinbuilders.com

FIRST FLOOR



Prices, plans, dimensions, features, specifications, materials, and availability of homes or communities are subject to change without notice or obligation. Illustrations are artists depictions only and may differ from completed improvements. All prices subject to change without notice. Please contact your sales associate before writing an offer.



STONE MARTIN
BUILDERS

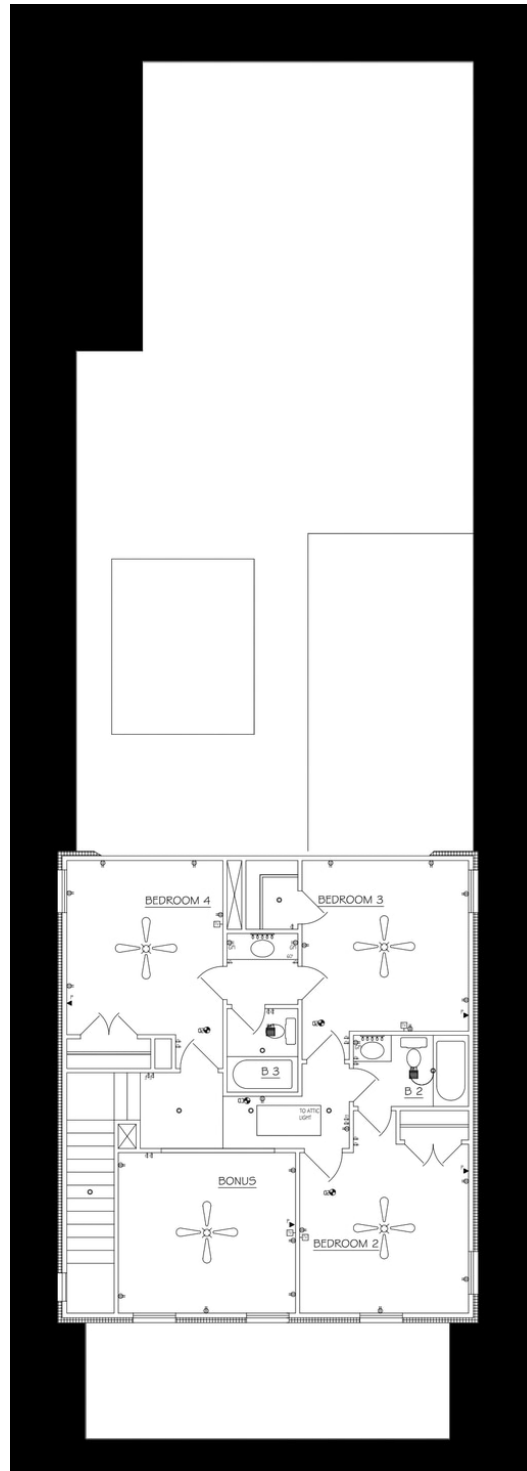
Contact Our Sales Associate

Tiesha Simmons

256-808-2250 |

susanlaughlin@stonemartinbuilders.com

SECOND FLOOR



Prices, plans, dimensions, features, specifications, materials, and availability of homes or communities are subject to change without notice or obligation. Illustrations are artists depictions only and may differ from completed improvements. All prices subject to change without notice. Please contact your sales associate before writing an offer.