



**STONE MARTIN
BUILDERS**

Contact Our Sales Associate

Rhonda Pitts

256-808-2250 |

susanlaughlin@stonemartinbuilders.com



**309 Clift Home Place Drive
Madison, AL 35757**

Clift Farm

\$595,722

Plan:Bennett F

Elevation:Elevation F

SQ FT:2,705

Beds:4

Baths:3.5

Garage:2

ABOUT THIS HOUSE

If front porches are your love language, then the Bennett is serving up a double portion for you. This two-story stunner boasts 4 bedrooms, 3 ½ bathrooms, and a bonus room to boot! The wrap front porch on the front of the home is a striking entrance to this warm home. Entering the great room, you'll immediately admire the large, open combined living space complete with a fireplace and breakfast bar leading into the kitchen. Speaking of kitchen, this one is full to the brim with plenty of cabinets and tons of countertop space. A pantry is not the only storage space downstairs – there is also an under-the-stairs storage closet and a walk-through laundry area that leads into a giant master walk-in closet. The master suite also includes a freestanding tub, roomy shower, double vanity, and double doors off the master bedroom that open onto – you guessed it – another porch. This side porch also provides access to the kitchen and the two-car garage. Upstairs you'll find three additional bedrooms, two full bathrooms, and a large bonus room that opens onto the second floor's front porch.

[...Read More Online](#)

ABOUT CLIFT FARM

Clift Farm is a southern style, mixed-use community built on the success of a century-old farm, belonging to the Clift family. The neighborhood offers a wide variety of residential housing to fit every lifestyle with high end finishes. Clift Farm will have outdoor living featuring nature trails with orchards, a clubhouse with an exercise gym and pool, a retail village anchored by Publix, restaurants, event spaces and workplaces located in one of North Alabama's most desired communities.

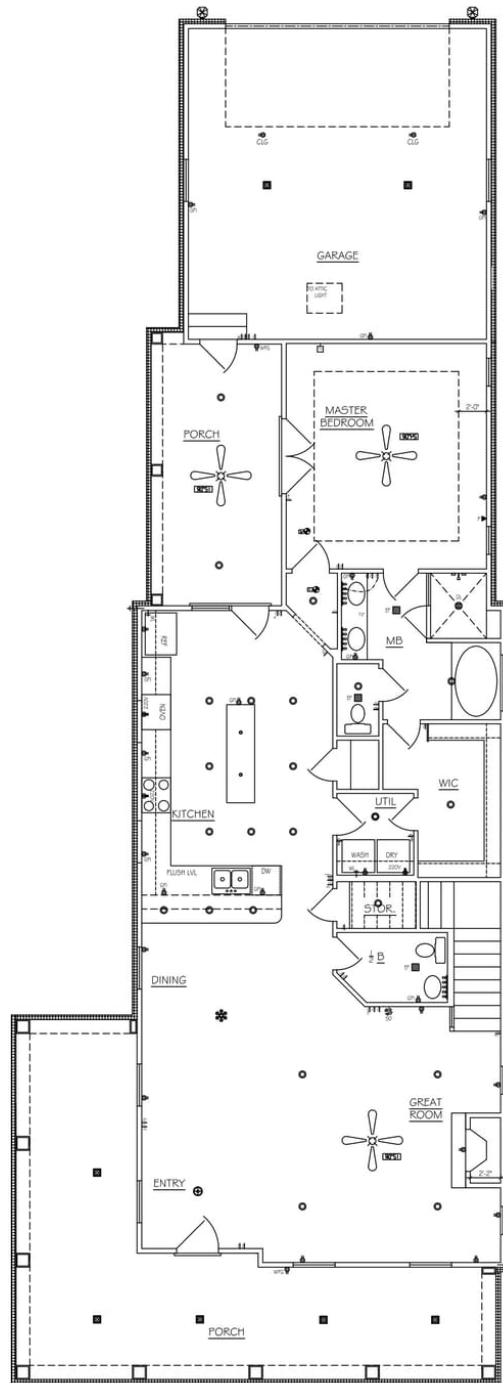
[...Read More Online](#)



**STONE MARTIN
BUILDERS**

Contact Our Sales Associate
Rhonda Pitts
256-808-2250 |
susanlaughlin@stonemartinbuilders.com

FIRST FLOOR



Prices, plans, dimensions, features, specifications, materials, and availability of homes or communities are subject to change without notice or obligation. Illustrations are artists depictions only and may differ from completed improvements. All prices subject to change without notice. Please contact your sales associate before writing an offer.



STONE MARTIN
BUILDERS

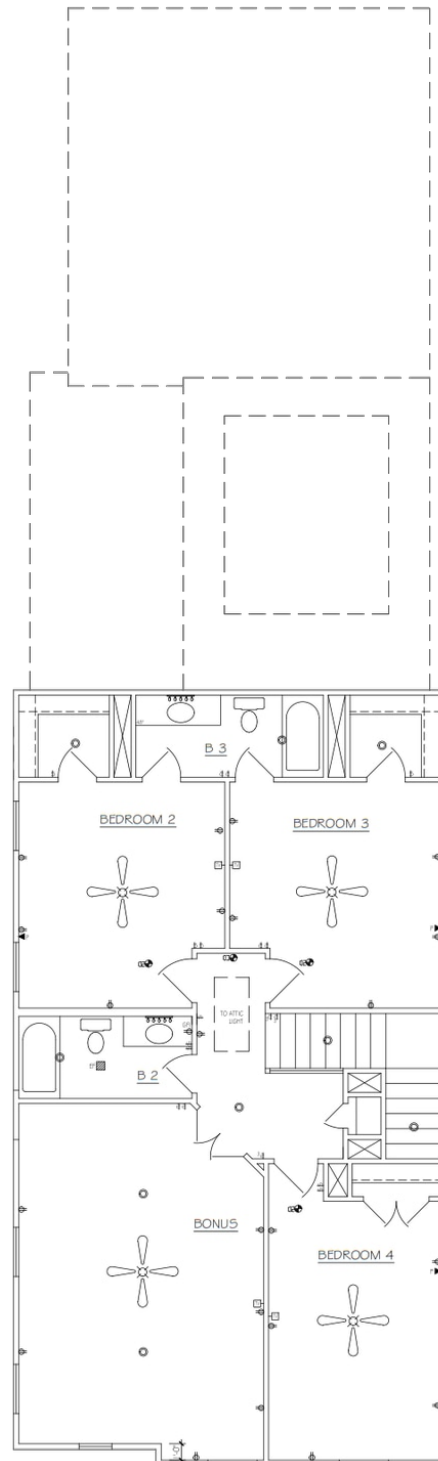
Contact Our Sales Associate

Rhonda Pitts

256-808-2250 |

susanlaughlin@stonemartinbuilders.com

SECOND FLOOR



Prices, plans, dimensions, features, specifications, materials, and availability of homes or communities are subject to change without notice or obligation. Illustrations are artists depictions only and may differ from completed improvements. All prices subject to change without notice. Please contact your sales associate before writing an offer.