



**151 Towhee Way
Madison, AL 35756**

Moore's Creek

\$698,999

Plan:Bainbridge II

SQ FT:3,489

Beds:5

Baths:4.0

Garage:3

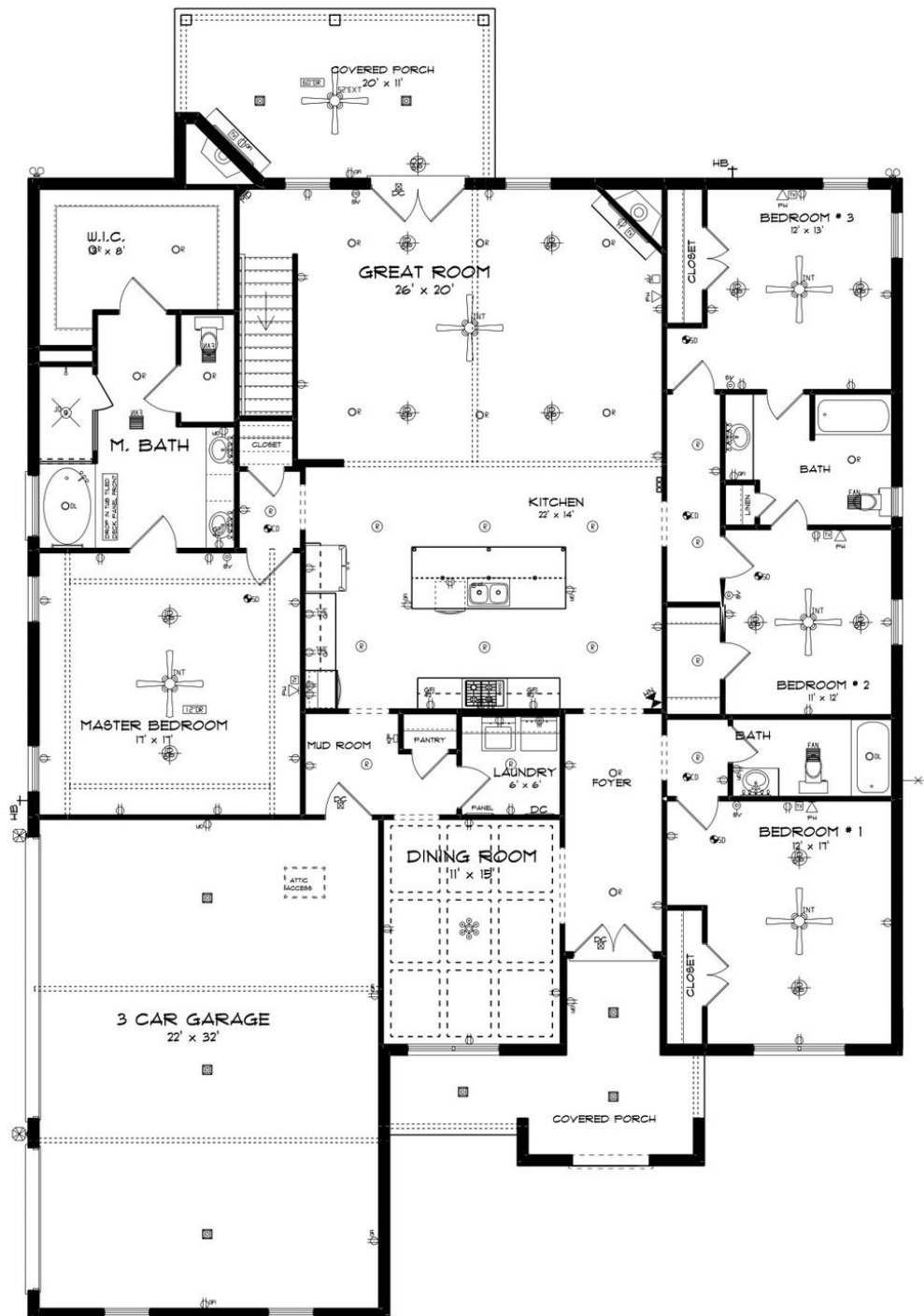
ABOUT THIS HOUSE

The "Bainbridge II" Plan is perfect for those who prefer elegance and space. This 5 bedroom, 4 bathroom plan features a sweeping great room and kitchen area that is perfect for cooking while also entertaining. A separate dining room is located at the front of the house connecting to the elegant foyer entry flowing into the open kitchen and great room. The kitchen features an attractive granite island that has plenty of seating space perfect for serving food while also entertaining guest in the great room. The grand master suite provides a large private space along with a connecting bathroom complete with double vanity, separate shower, soaking tub and abundant storage space in the large walk in closet and linen closet. Three more bedrooms complete this floor plan, all with plentiful closet space along with two full bathrooms. The 2nd floor features a large bonus room with sitting area, a full bath & closet. This well laid floor plan can accommodate the space needed for a big family all in the space of one floor.

...Read More Online



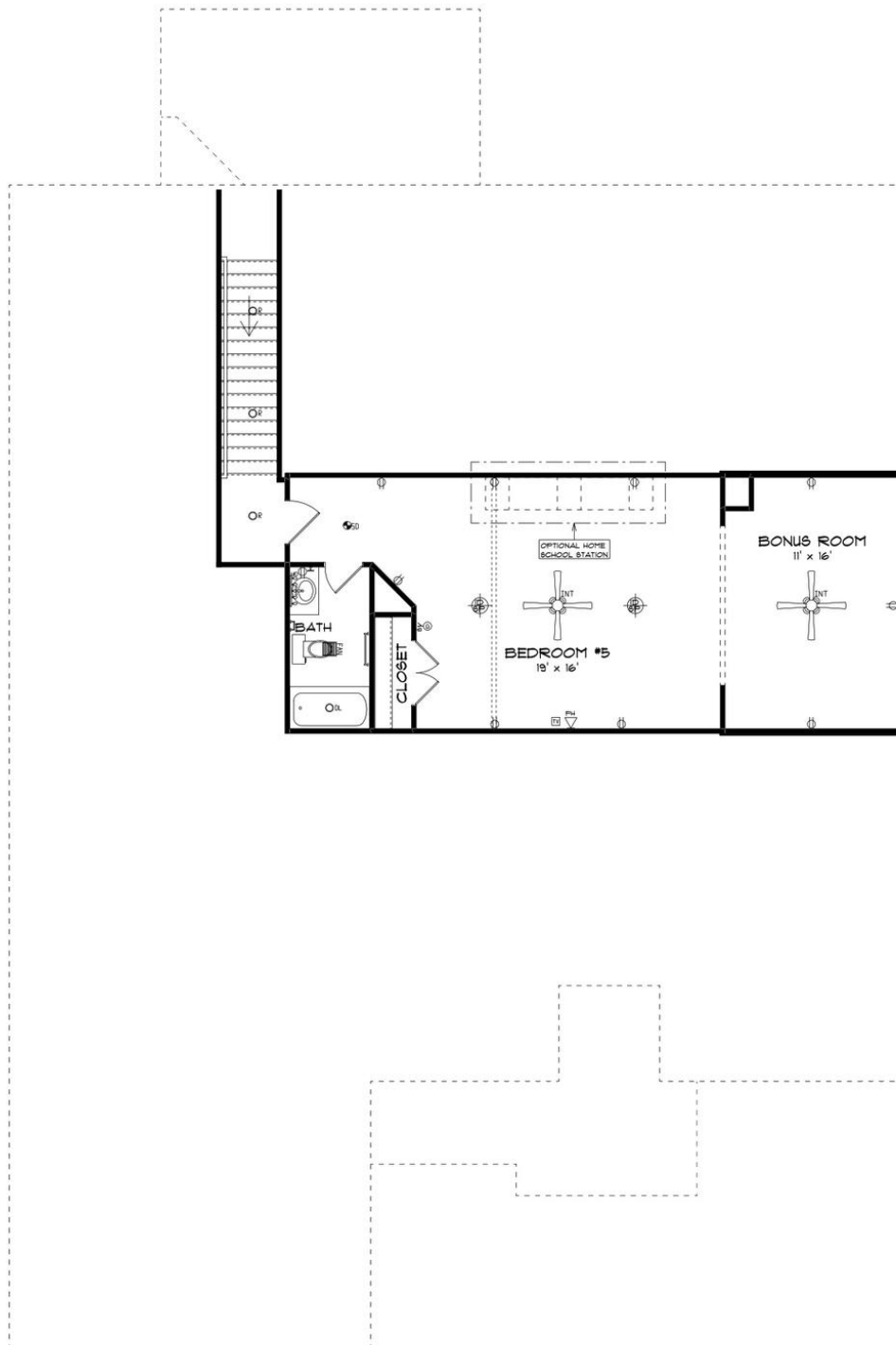
FIRST FLOOR



Prices, plans, dimensions, features, specifications, materials, and availability of homes or communities are subject to change without notice or obligation. Illustrations are artists depictions only and may differ from completed improvements. All prices subject to change without notice. Please contact your sales associate before writing an offer.



SECOND FLOOR



Prices, plans, dimensions, features, specifications, materials, and availability of homes or communities are subject to change without notice or obligation. Illustrations are artists depictions only and may differ from completed improvements. All prices subject to change without notice. Please contact your sales associate before writing an offer.