



**STONE MARTIN
BUILDERS**



**11383 Waterman Lane
Madison, AL 35756**

Nature's Trail

Plan: Huddlestone II

SQ FT: 3,055

Beds: 4

Baths: 4.0

Garage: 3

ABOUT THIS HOUSE

With 4 bedrooms and 4.5 baths huddled around the spectacular great room, "Huddlestone II" offers a great plan with an exceptional use of space. The large great room area with vaulted ceilings is complete with a fireplace and opens into the spacious kitchen finished with granite countertops and a large island. Retreat to the entry or rear covered patios that offer a surplus amount of shade and a serene setting on any given day. Added to the primary bedroom and bath, the 3 additional bedrooms provide plenty of closet space and two bathrooms. This highly desirable plan is perfect for numerous ways of life, but especially for multi-generational families. The plan is rounded out exquisitely with a 3-car garage. The 2nd floor is home to a large bonus room featuring a full bath and walk-in-closet.

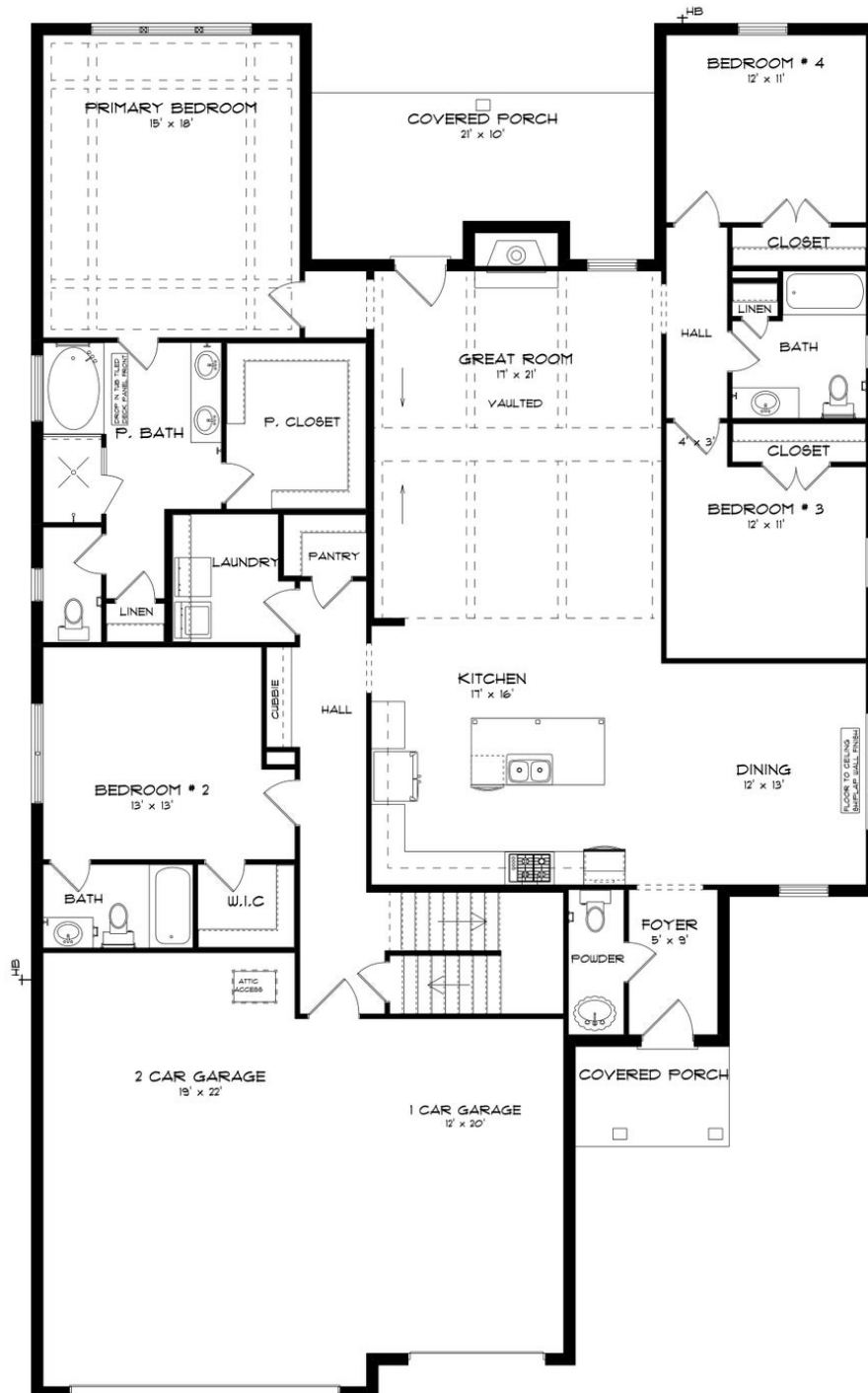
ABOUT NATURE'S TRAIL

Stone Martin Builders wants to help you Splash into Savings on a new home! Ask a Sales Professional about our special incentives and new home savings! Welcome to Nature's Trail, an idyllic retreat nestled in a serene, countryside setting. Escape the hustle and bustle and discover the tranquility of our community, where neighbors become friends and shared green spaces foster a strong sense of community. Experience quality construction that stands the test of time, paired with integrated smart home technology for modern living. From gourmet kitchens to designer-selected finishes, every detail is meticulously designed to elevate your lifestyle. Enjoy the convenience of living in a location with easy access to I-565, I-65, and Highway 72, making errands and commuting a breeze. Nature's Trail offers the perfect balance of peaceful living with convenient amenities, making it an ideal choice for those seeking a retreat from the city without sacrificing convenience. Explore the allure of new construction homes in a community designed for modern living. Ready to experience the Stone Martin Builders difference? Schedule a visit to Nature's Trail on the Flint and meet with our knowledgeable Sales Professionals. Explore available homes and embark on the journey to find your personal oasis in Huntsville, AL.

Prices, plans, dimensions, features, specifications, materials, and availability of homes or communities are subject to change without notice or obligation. Illustrations are artists depictions only and may differ from completed improvements. All prices subject to change without notice. Please contact your sales associate before writing an offer.



FIRST FLOOR (F)



Prices, plans, dimensions, features, specifications, materials, and availability of homes or communities are subject to change without notice or obligation. Illustrations are artists depictions only and may differ from completed improvements. All prices subject to change without notice. Please contact your sales associate before writing an offer.



SECOND FLOOR (F)

