



**STONE MARTIN
BUILDERS**



118 Williamette Drive

Madison, AL 35756

The Crossings at River Landing

\$422,985

Plan: Sherfield

SQ FT: 2,372

Beds: 3

Baths: 3.0

Garage: 2

ABOUT THIS HOUSE

Designed to fit any lifestyle, the "Sherfield" floor plan features distinct spaces while maintaining an open flow. Open and appealing, the foyer gives a sense of grandeur for establishing a classic look to this home. The fabulous primary bedroom is unusually spacious for a home of this size and will accommodate heavy furniture along with plenty of storage in the walk in closet. A dynamic great room with vaulted beamed ceiling combines style and functionality with its attention to use of living space. Entertain or simply prepare daily evening meals in this cook's kitchen with an abundance of granite counter space. No need to worry about the automobile storage, as this plan comes equipped with a two car garage. Finally two large bedrooms and an upstairs bonus room with a full bathroom attached complete this plan that provides the space and storage for growing families or simply entertaining guests.

ABOUT THE CROSSINGS AT RIVER LANDING

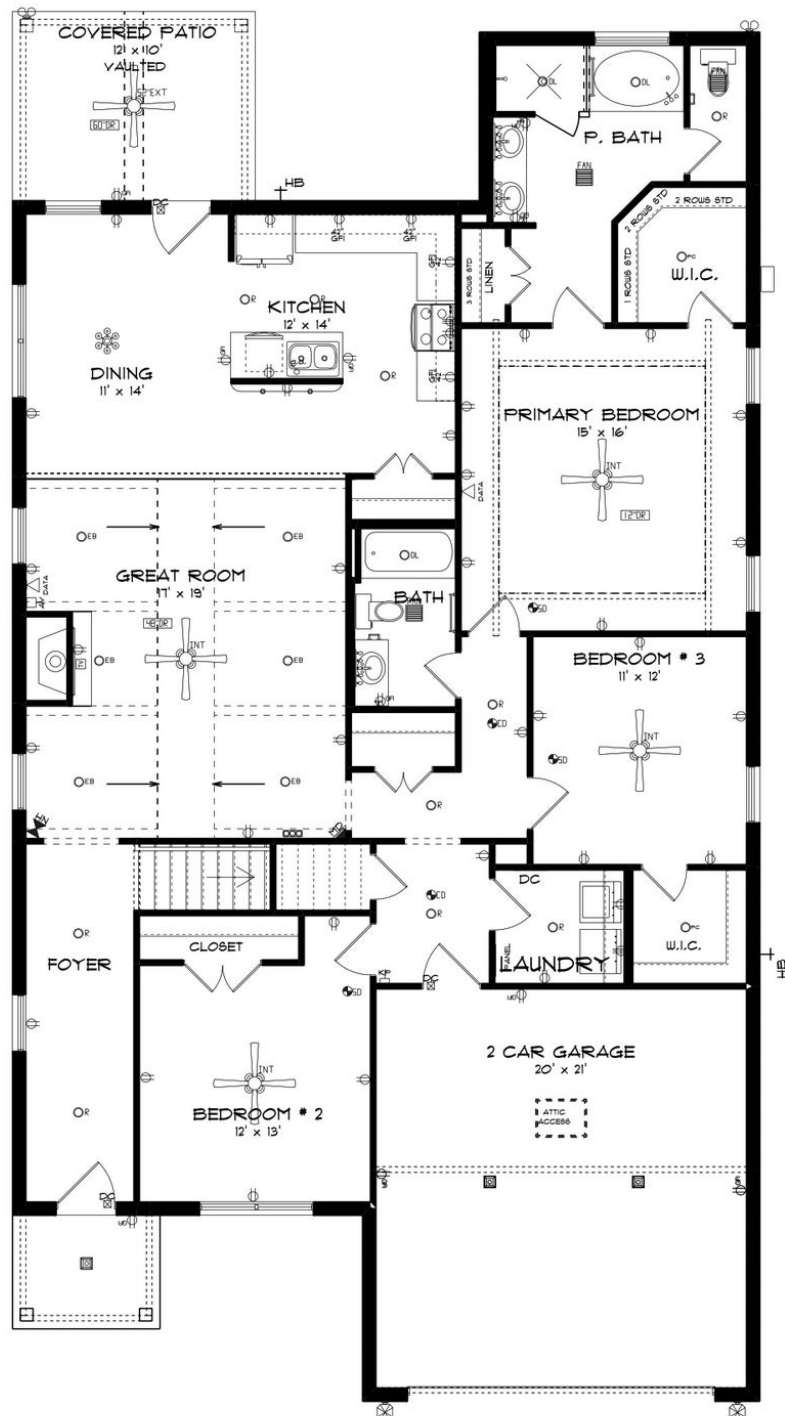
Stone Martin Builders wants to help you Spring into Savings on a new home! Ask a Sales Professional about our special incentives and new home savings! Welcome to The Crossings at River Landing, a picturesque retreat nestled within the tranquil backdrop of Wheeler Wildlife Refuge. Experience the ideal blend of country living and modern convenience, with easy access to city amenities and a peaceful ambiance that fosters a strong sense of community. Indulge in the array of recreational amenities within the community, including a spacious main clubhouse, separate children's clubhouse, resort-style swimming pool with a separate kiddie pool, a well-appointed fitness center, two lighted tennis courts, a full-sized basketball court, and a playground. These amenities provide the optimal backdrop for neighbors to come together and forge lasting connections. With Madison City Schools nearby and endless amenities at your fingertips, The Crossings at River Landing offers the ideal setting for those seeking a vibrant community atmosphere paired with the tranquility of country living. Discover spacious floorplans and thoughtful design details meticulously crafted to enhance your living experience. Step into the future with integrated smart home connectivity, seamlessly enhancing your daily routine with modern conveniences. From climate control to advanced security features, experience the epitome of convenience at your fingertips. Ready to experience the Stone Martin difference? Schedule a...

Prices, plans, dimensions, features, specifications, materials, and availability of homes or communities are subject to change without notice or obligation. Illustrations are artists depictions only and may differ from completed improvements. All prices subject to change without notice. Please contact your sales associate before writing an offer.



**STONE MARTIN
BUILDERS**

FIRST FLOOR

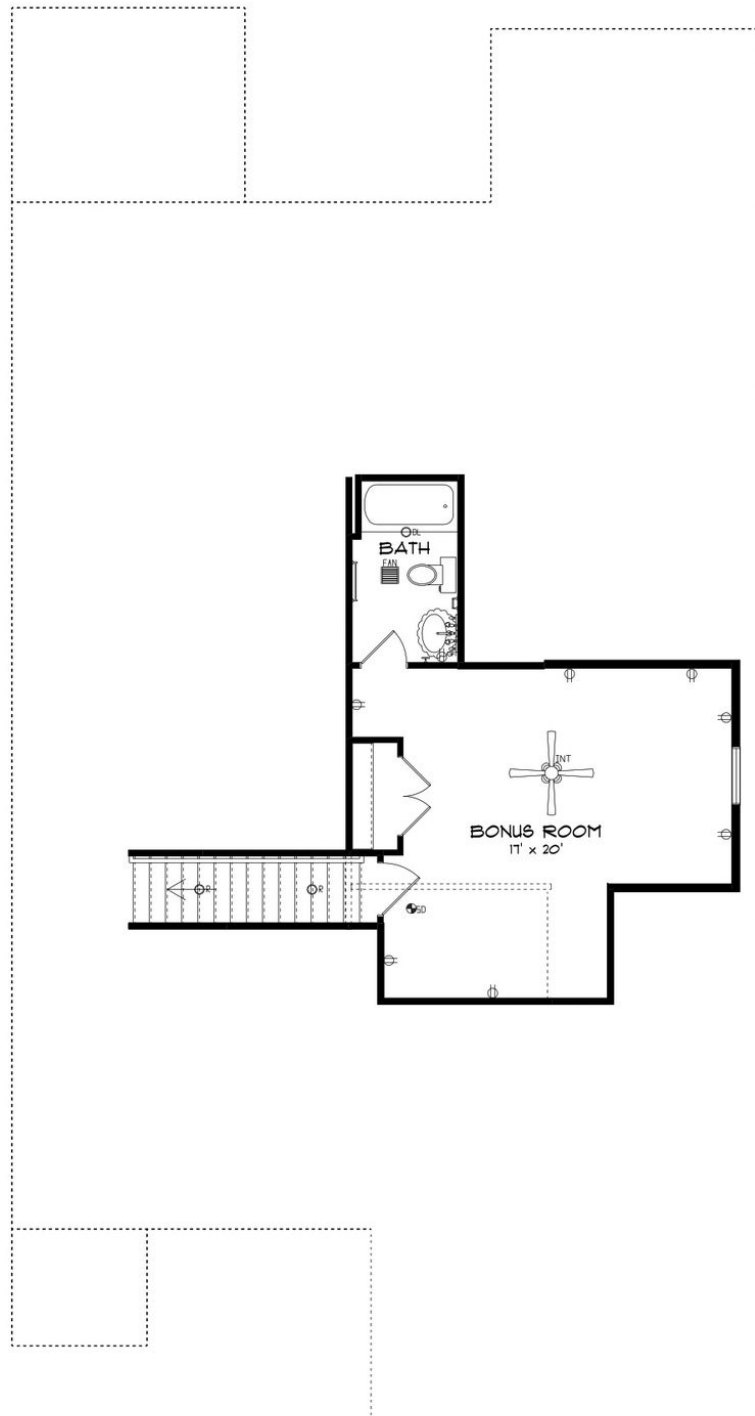


Prices, plans, dimensions, features, specifications, materials, and availability of homes or communities are subject to change without notice or obligation. Illustrations are artists depictions only and may differ from completed improvements. All prices subject to change without notice. Please contact your sales associate before writing an offer.



**STONE MARTIN
BUILDERS**

SECOND FLOOR



Prices, plans, dimensions, features, specifications, materials, and availability of homes or communities are subject to change without notice or obligation. Illustrations are artists depictions only and may differ from completed improvements. All prices subject to change without notice. Please contact your sales associate before writing an offer.