



**120 Williamette Drive
Madison, AL 35756
The Crossings at River Landing**

\$517,487

Plan: Cunningham

SQ FT: 3,089

Beds: 4

Baths: 3.0

Garage: 2

ABOUT THIS HOUSE

The "Cunningham" floorplan features cunning details that will have you falling in love with this plan. The "Cunningham" boasts two entrances, one through the garage to the mudroom and one through the large, covered porch to the foyer. The foyer leads directly into the all-in-one kitchen, great room and dining room. The open-concept is a dream for entertaining or spending quality time together. The primary retreat off of the kitchen features a luxurious primary bathroom and two extensive walk-in closets. With two vanities on either side of the primary bathroom, you will never be fighting for counter space or elbow room. The upstairs flaunts a unique design with a loft, two bedrooms and a sweeping bonus room/bedroom. Need more space for a playroom? Make it a bonus room! Need a little more guest room or family room? Make it a bedroom and sitting area! The "Cunningham" floorplan offers endless possibilities to cater your house to your needs.

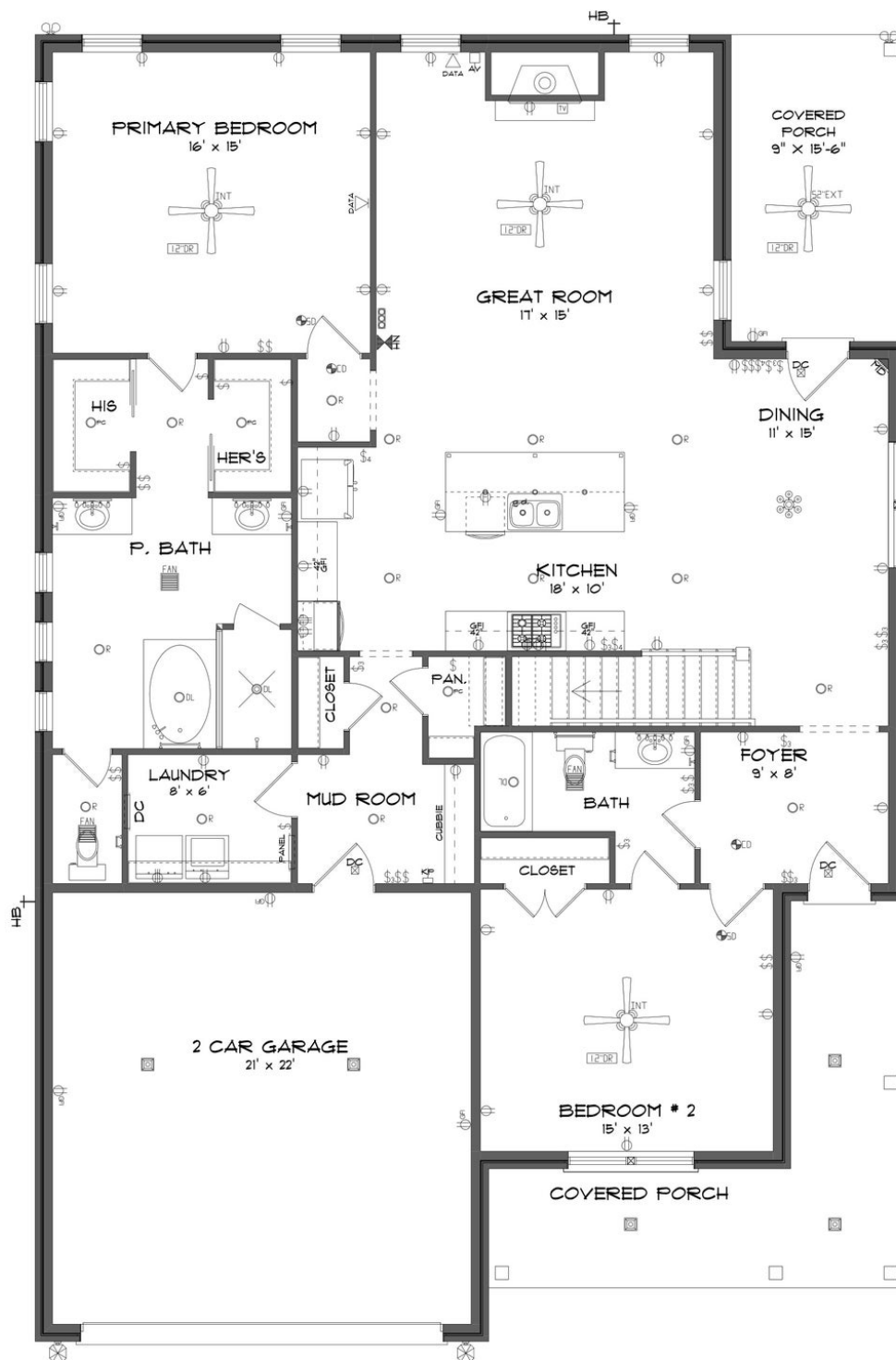
ABOUT THE CROSSINGS AT RIVER LANDING

Stone Martin Builders wants to help you Spring into Savings on a new home! Ask a Sales Professional about our special incentives and new home savings! Welcome to The Crossings at River Landing, a picturesque retreat nestled within the tranquil backdrop of Wheeler Wildlife Refuge. Experience the ideal blend of country living and modern convenience, with easy access to city amenities and a peaceful ambiance that fosters a strong sense of community. Indulge in the array of recreational amenities within the community, including a spacious main clubhouse, separate children's clubhouse, resort-style swimming pool with a separate kiddie pool, a well-appointed fitness center, two lighted tennis courts, a full-sized basketball court, and a playground. These amenities provide the optimal backdrop for neighbors to come together and forge lasting connections. With Madison City Schools nearby and endless amenities at your fingertips, The Crossings at River Landing offers the ideal setting for those seeking a vibrant community atmosphere paired with the tranquility of country living. Discover spacious floorplans and thoughtful design details meticulously crafted to enhance your living experience. Step into the future with integrated smart home connectivity, seamlessly enhancing your daily routine with modern conveniences. From climate control to advanced security features, experience the epitome of convenience at your fingertips. Ready to experience the Stone Martin difference? Schedule a...



**STONE MARTIN
BUILDERS**

FIRST FLOOR

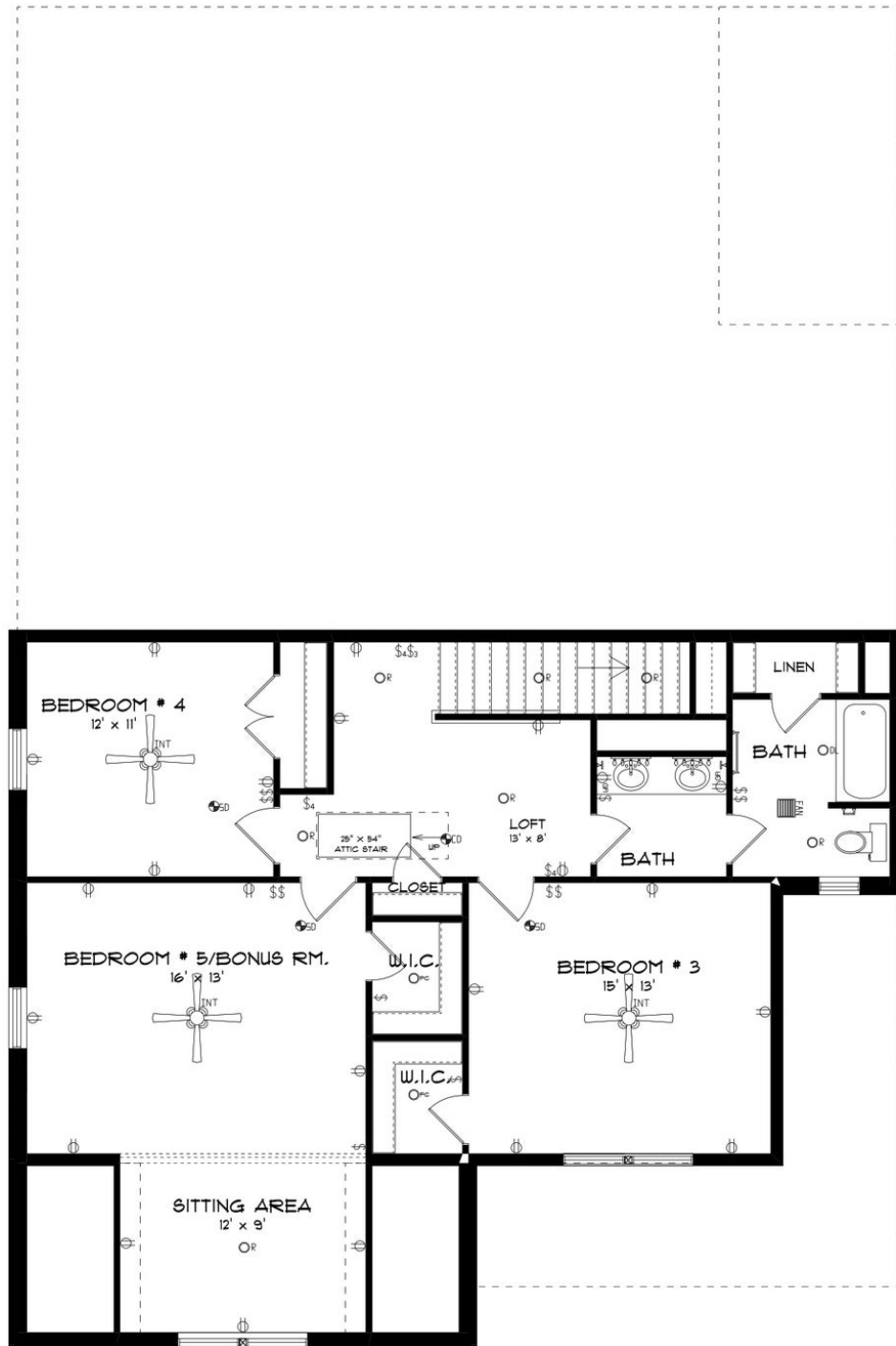


Prices, plans, dimensions, features, specifications, materials, and availability of homes or communities are subject to change without notice or obligation. Illustrations are artists depictions only and may differ from completed improvements. All prices subject to change without notice. Please contact your sales associate before writing an offer.



**STONE MARTIN
BUILDERS**

SECOND FLOOR



Prices, plans, dimensions, features, specifications, materials, and availability of homes or communities are subject to change without notice or obligation. Illustrations are artists depictions only and may differ from completed improvements. All prices subject to change without notice. Please contact your sales associate before writing an offer.