



**STONE MARTIN  
BUILDERS**



**103 Menervey Lane**

**Meridianville, AL 35759**

**Whitaker Landing**

**Plan:** Bellemeade

**SQ FT:** 2,707

**Beds:** 4

**Baths:** 3.5

**Garage:** 2

## ABOUT THIS HOUSE

One of our most unique floorplans, the "Bellemeade" features 4 bedrooms and 3.5 bathrooms with optimized living space. When entering through the covered porch, you are immediately met with an elegant study off the foyer. The foyer leads into the abundant kitchen and great room. The great room boasts vaulted ceilings and a center fireplace for all those cozy family gatherings. The kitchen features a grand island with plenty of sitting space and a large pantry. The primary suite has a roomy design, and the primary bath is equipped with double granite vanities, garden/soaking tub, separate tiled shower with a glass door and a spacious walk-in closet. The home is complete with 3 additional bedrooms and 2 bathrooms.

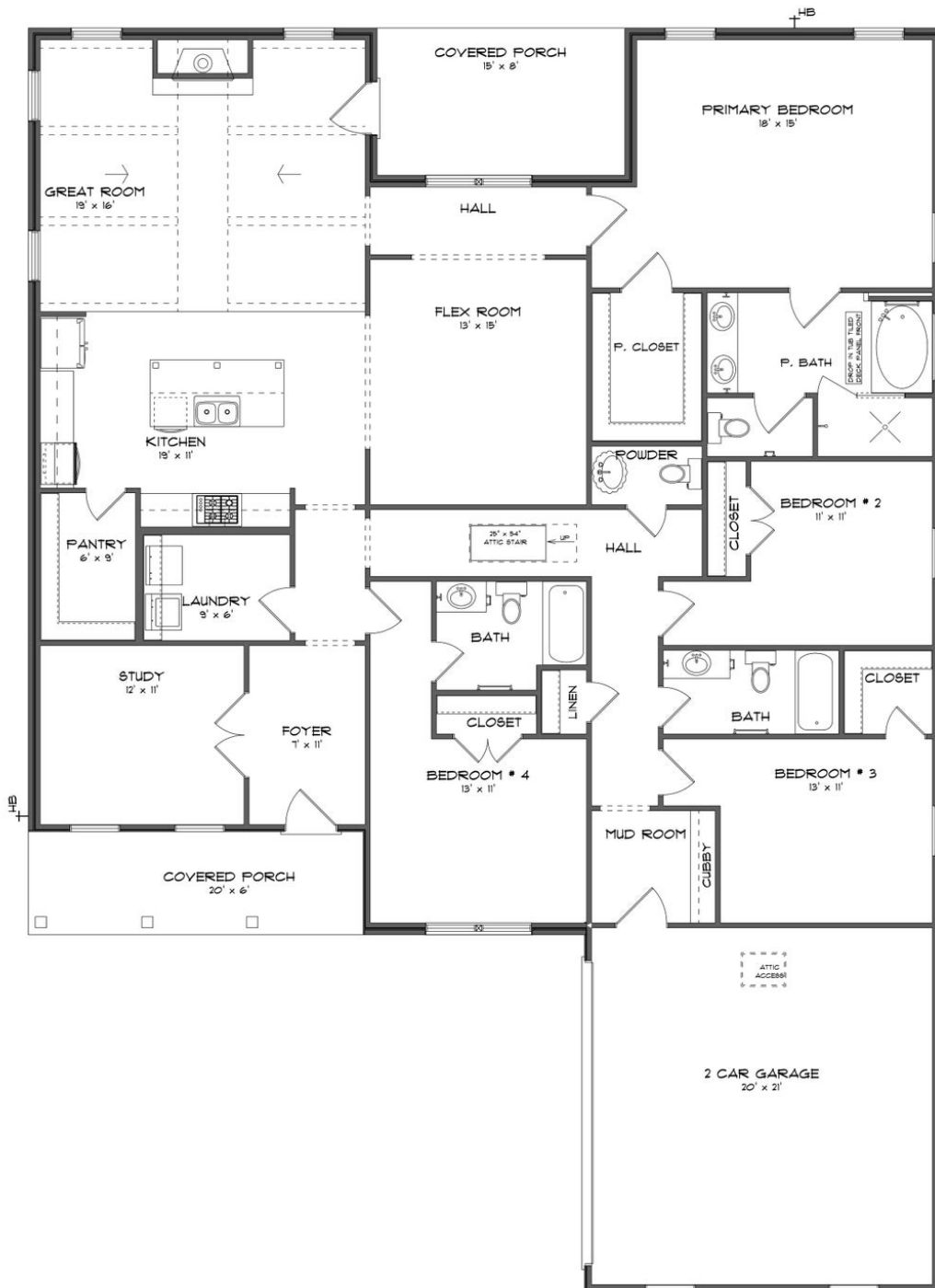
## ABOUT WHITAKER LANDING

Stone Martin Builders wants to help you get into the game of homeownership! Ask a Sales Professional about our special incentives and new home savings! Discover your true escape at Whitaker Landing, an idyllic retreat crafted by Stone Martin Builders. This new home community welcomes you with spacious floorplans and thoughtful design details that redefine the meaning of homes. Unwind in style at Whitaker Landing, boasting a community pool and cabana—your haven for relaxation. Whether it's soaking up the sun on a hot summer day or taking a peaceful stroll around the community, every moment becomes an opportunity to embrace tranquility. Nestled in Meridianville, part of Madison County, off the Parkway 231 and Steger Road, Whitaker Landing is your oasis with all the dream amenities. Experience the luxury of a natural gas tankless hot water heater, granite counters, a full tile shower in the ensuite primary bathroom, and more—all showcasing the meticulous craftsmanship of Stone Martin Builders. Step into your gourmet kitchen, the heart of your home, where functionality meets elegance. Thoughtfully designed for both culinary creativity and stylish gatherings, these kitchens become the epicenter of family life. Whitaker Landing is equipped with integrated smart home connectivity, elevating your living experience with modern technology seamlessly woven into the fabric of your home. From energy-efficient features to high-quality construction, every detail reflects a commitment to ...

Prices, plans, dimensions, features, specifications, materials, and availability of homes or communities are subject to change without notice or obligation. Illustrations are artists depictions only and may differ from completed improvements. All prices subject to change without notice. Please contact your sales associate before writing an offer.



## ELEVATION G



Prices, plans, dimensions, features, specifications, materials, and availability of homes or communities are subject to change without notice or obligation. Illustrations are artists depictions only and may differ from completed improvements. All prices subject to change without notice. Please contact your sales associate before writing an offer.