



**STONE MARTIN  
BUILDERS**



**105 Menervy Lane  
Meridianville, AL 35759  
Whitaker Landing**

**\$452,009**

**Plan: St James**

**SQ FT: 2,634**

**Beds: 4**

**Baths: 3.0**

**Garage: 3**

## ABOUT THIS HOUSE

"St. James" plan is ranked among the angels. The long foyer entrance leads into the stunning kitchen complete with an island and gorgeous granite countertops, the dining space adjacent. The kitchen opens to an extraordinarily great room featuring elegant hardwood flooring and an attractive fireplace alongside vaulted ceilings. The rear covered patio provides ample shade and a peaceful setting. The plan is rounded out exquisitely with a 3-car garage with plenty of storage space or hobby space for easy come and go access. The 4 bedroom and 3 bath plan is charming for a multi-generational family because the 3 distinct sleeping areas and an in-suite for parents or a grown child moving back home.

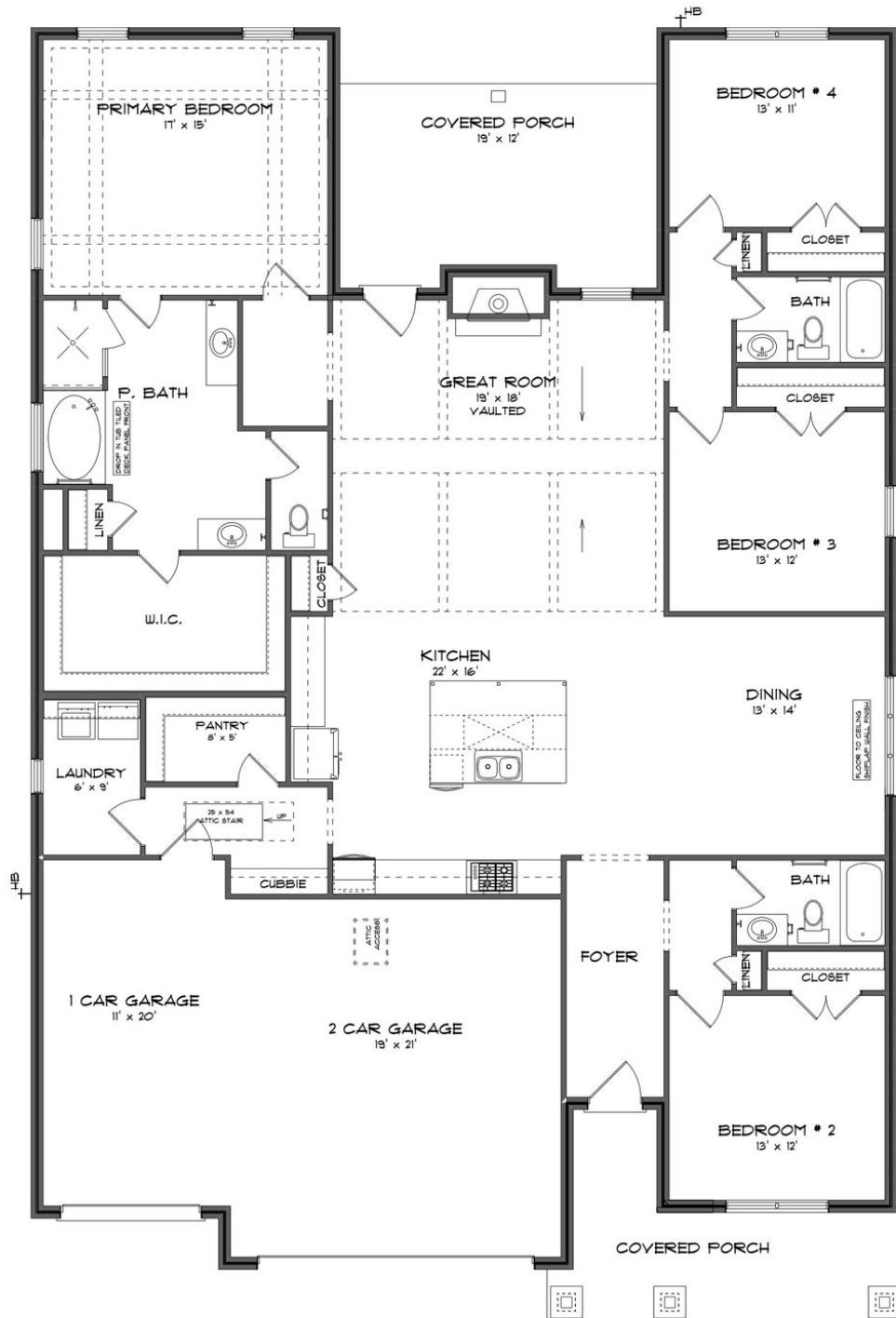
## ABOUT WHITAKER LANDING

Stone Martin Builders wants to help you Splash into Savings on a new home! Ask a Sales Professional about our special incentives and new home savings! Discover your true escape at Whitaker Landing, an idyllic retreat crafted by Stone Martin Builders. This new home community welcomes you with spacious floorplans and thoughtful design details that redefine the meaning of homes. Unwind in style at Whitaker Landing, boasting a community pool and cabana—your haven for relaxation. Whether it's soaking up the sun on a hot summer day or taking a peaceful stroll around the community, every moment becomes an opportunity to embrace tranquility. Nestled in Meridianville, part of Madison County, off the Parkway 231 and Steger Road, Whitaker Landing is your oasis with all the dream amenities. Experience the luxury of a natural gas tankless hot water heater, granite counters, a full tile shower in the ensuite primary bathroom, and more—all showcasing the meticulous craftsmanship of Stone Martin Builders. Step into your gourmet kitchen, the heart of your home, where functionality meets elegance. Thoughtfully designed for both culinary creativity and stylish gatherings, these kitchens become the epicenter of family life. Whitaker Landing is equipped with integrated smart home connectivity, elevating your living experience with modern technology seamlessly woven into the fabric of your home. From energy-efficient features to high-quality construction, every detail reflects a commitment...

Prices, plans, dimensions, features, specifications, materials, and availability of homes or communities are subject to change without notice or obligation. Illustrations are artists depictions only and may differ from completed improvements. All prices subject to change without notice. Please contact your sales associate before writing an offer.



# ELEVATION F



Prices, plans, dimensions, features, specifications, materials, and availability of homes or communities are subject to change without notice or obligation. Illustrations are artists depictions only and may differ from completed improvements. All prices subject to change without notice. Please contact your sales associate before writing an offer.