



**STONE MARTIN
BUILDERS**



**115 Nuckolls Lane
Meridianville, AL 35759
Whitaker Landing**

Plan: Mayfair
SQ FT: 3,670
Beds: 5
Baths: 4.5
Garage: 2

ABOUT THIS HOUSE

Discover the charm of the "Mayfair" plan—a home thoughtfully crafted for comfortable living in every way. From the inviting grand entrance with a 2-story foyer to the practical open floorplan, this home seamlessly combines grandeur with functionality. Entertain effortlessly with a stylish dining room, a granite-topped butler's pantry, and a spacious kitchen serving island. Bedroom needs are met with a primary suite and a guest suite on the main level. Enjoy a primary suite that's both spacious and cozy, ensuring privacy and meeting various lifestyle demands. Upstairs, find three generously sized bedrooms, a flexible loft area, and practical use of space. In every aspect, this plan promises a fabulous living experience that won't disappoint. Get ready to feel right at home with the "Mayfair" plan!

ABOUT WHITAKER LANDING

Discover your true escape at Whitaker Landing, an idyllic retreat crafted by Stone Martin Builders. This new home community welcomes you with spacious floorplans and thoughtful design details that redefine the meaning of homes. Unwind in style at Whitaker Landing, boasting a community pool and cabana—your haven for relaxation. Whether it's soaking up the sun on a hot summer day or taking a peaceful stroll around the community, every moment becomes an opportunity to embrace tranquility. Nestled in Meridianville, part of Madison County, off the Parkway 231 and Steger Road, Whitaker Landing is your oasis with all the dream amenities. Experience the luxury of a natural gas tankless hot water heater, granite counters, a full tile shower in the ensuite primary bathroom, and more—all showcasing the meticulous craftsmanship of Stone Martin Builders. Step into your gourmet kitchen, the heart of your home, where functionality meets elegance. Thoughtfully designed for both culinary creativity and stylish gatherings, these kitchens become the epicenter of family life. Whitaker Landing is equipped with integrated smart home connectivity, elevating your living experience with modern technology seamlessly woven into the fabric of your home. From energy-efficient features to high-quality construction, every detail reflects a commitment to excellence. Ready to experience the Stone Martin Builders difference? Schedule a visit to Whitaker Landing and consult with our knowledgeable Sales Prof...

Prices, plans, dimensions, features, specifications, materials, and availability of homes or communities are subject to change without notice or obligation. Illustrations are artists depictions only and may differ from completed improvements. All prices subject to change without notice. Please contact your sales associate before writing an offer.



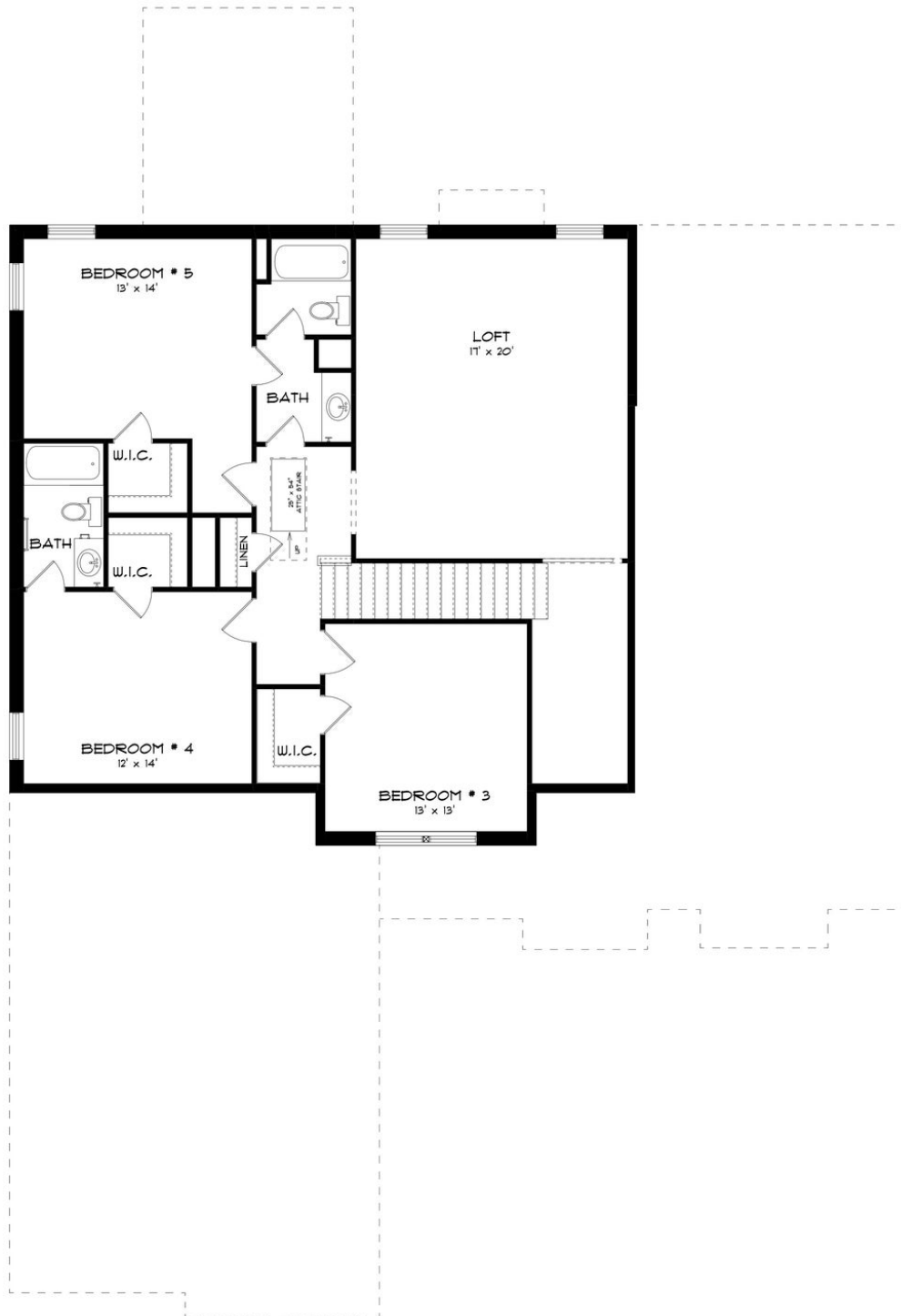
FIRST FLOOR (H)



Prices, plans, dimensions, features, specifications, materials, and availability of homes or communities are subject to change without notice or obligation. Illustrations are artists depictions only and may differ from completed improvements. All prices subject to change without notice. Please contact your sales associate before writing an offer.



SECOND FLOOR (H)



Prices, plans, dimensions, features, specifications, materials, and availability of homes or communities are subject to change without notice or obligation. Illustrations are artists depictions only and may differ from completed improvements. All prices subject to change without notice. Please contact your sales associate before writing an offer.