



**STONE MARTIN  
BUILDERS**



**9267 Paxton Street  
Montgomery, AL 36117**

**Jubilee**

**Plan:** Kinkade

**SQ FT:** 2,383

**Beds:** 3

**Baths:** 2.5

**Garage:** 2

## ABOUT THIS HOUSE

Constant appeal and elegant definitions are found in the "Kinkade" plan for those calling for luxury and comfort. A vaulted beamed ceiling in the huge great room accentuates the space along with excellent finishes. The custom fireplace allows an even greater level of amenities while offering sheer enjoyment of an evening fire on those cooler nights. The huge kitchen's attention to custom cabinetry, upgraded stainless steel appliances, and granite counter tops, are sure to enhance cooking and eating experiences. Retire to the primary suite that exudes privacy and use of space and take advantage of the well thought out primary bath with every amenity for speedy starts for the day. From something as simple as a laundry room that does not abut any bedroom or the bonus room located upstairs along with a half bath that can be used as an office space, entertainment room, or even another bedroom; this plan provides plenty of comfort.

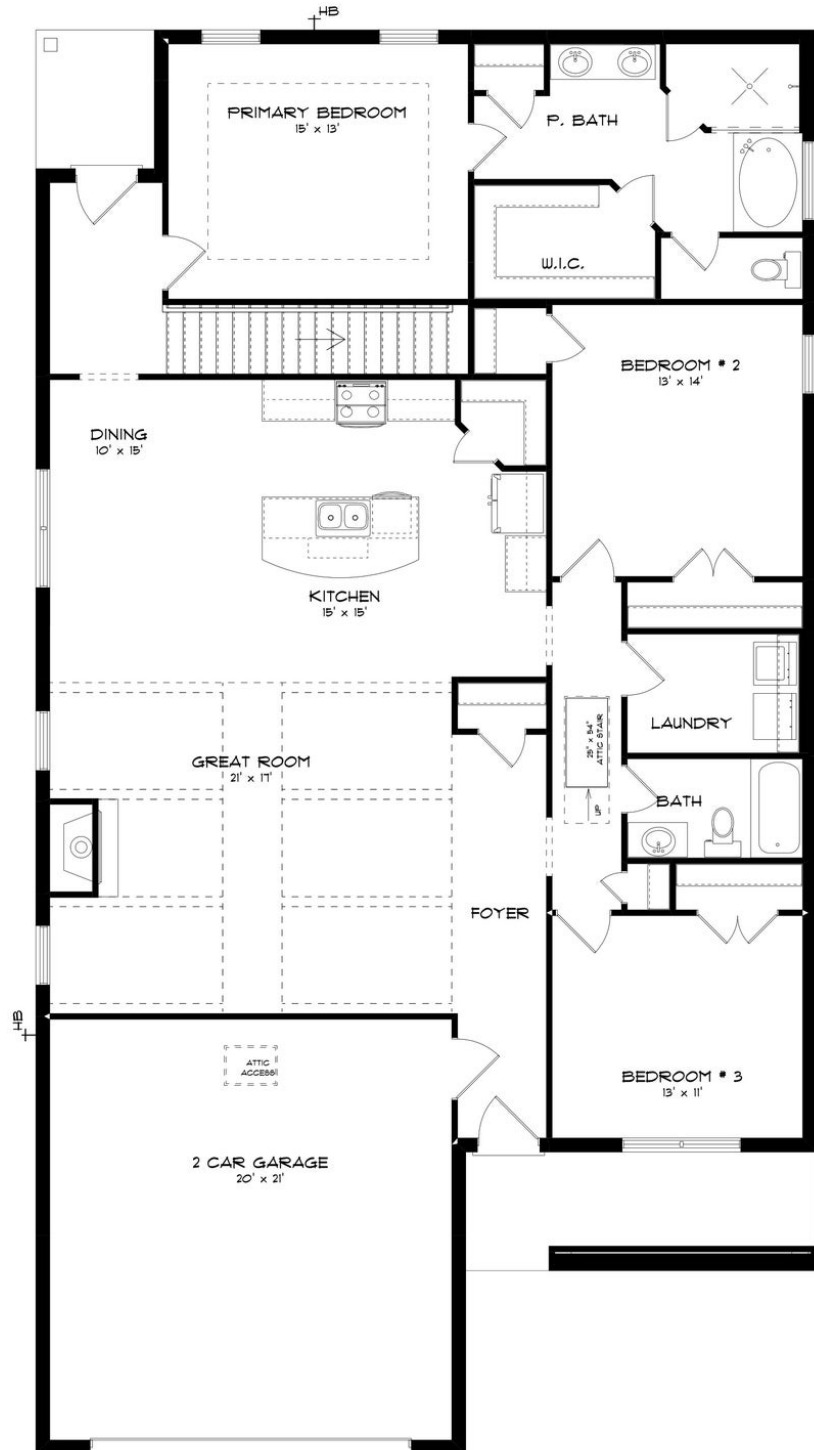
## ABOUT JUBILEE

Discover the allure of Jubilee, a Stone Martin Builders new home community nestled in the tranquil outskirts of Montgomery, AL. Escape the hustle and bustle while still enjoying easy access to the city's amenities, ensuring you never miss out on what Montgomery has to offer. Conveniently located near shopping, dining, and entertainment, including The Shoppes at Eastchase, Jubilee offers the perfect balance of suburban serenity and urban convenience. Multiple schools in close proximity make carpooling a breeze, while easy access to the interstate simplifies commuting. At Jubilee, experience the epitome of modern living with spacious floorplans, meticulously crafted to enhance your lifestyle. Immerse yourself in thoughtful design details and gourmet kitchens, perfect for entertaining and everyday living. Integrated smart home connectivity ensures convenience at your fingertips, while our commitment to high-quality construction and energy efficiency guarantees a home that exceeds expectations. Embrace the sense of community at Jubilee, where neighbors become friends and lasting connections are made. Ready to experience the Stone Martin Builders difference? Schedule a visit to Jubilee and meet with our knowledgeable Sales Professionals. Explore available homes and embark on the journey to find your personal oasis in Montgomery, AL.

Prices, plans, dimensions, features, specifications, materials, and availability of homes or communities are subject to change without notice or obligation. Illustrations are artists depictions only and may differ from completed improvements. All prices subject to change without notice. Please contact your sales associate before writing an offer.



## FIRST FLOOR (H)



Prices, plans, dimensions, features, specifications, materials, and availability of homes or communities are subject to change without notice or obligation. Illustrations are artists depictions only and may differ from completed improvements. All prices subject to change without notice. Please contact your sales associate before writing an offer.



## SECOND FLOOR (H)

