



**STONE MARTIN
BUILDERS**



**883 Sandbed Road
Newton (The Greater
Wicksburg Area), AL 36352
Cottage Grove**

Plan: Overton
SQ FT: 2,682
Beds: 4
Baths: 2.5
Garage: 2

ABOUT THIS HOUSE

The "Overton" is a 1 ½ story open floorplan with ample possibilities. This four bedroom, two and a half bath plan with bonus room begins with a refined foyer entry way that opens into a roomy living area with a vaulted ceiling. Next experience the open kitchen with large center island and adjoining dining room. The kitchen offers built in appliances, granite countertops and an expanded pantry. The primary quarters provide a large bedroom and walk in closet as well as a luxurious bathroom complete with a double granite vanity, garden/soaking tub, and tiled shower with glass door. The bonus room located upstairs includes a half bath and has plenty of possibilities as an entertainment area or extra bedroom. This layout truly is a must see!

ABOUT COTTAGE GROVE

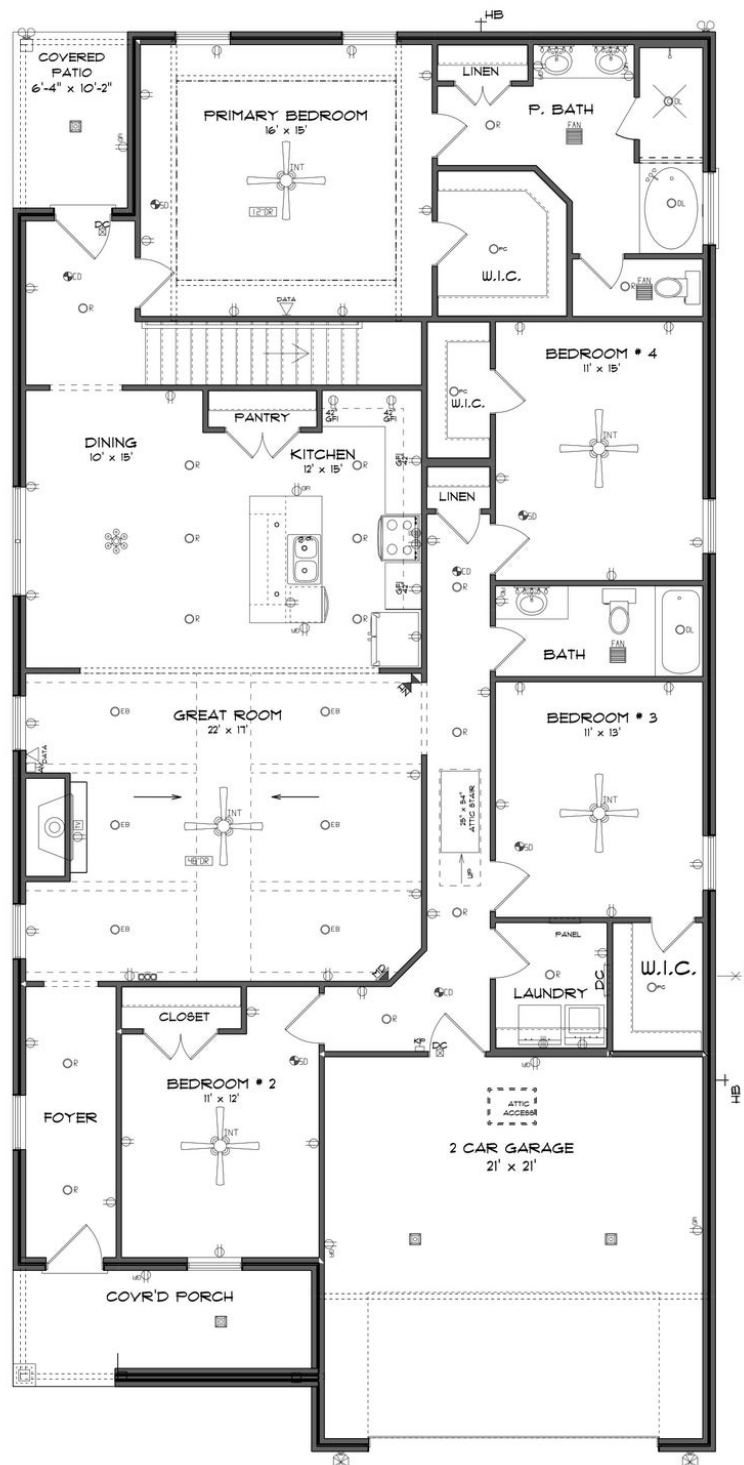
Stone Martin Builders wants to help you Spring into Savings on a new home! Ask a Sales Professional about our special incentives and new home savings! Welcome to the allure of Stone Martin Builders' latest venture in the well-established community of Cottage Grove. Situated west of Dothan, Alabama, this enclave of new construction homes brings a touch of southern charm with its four-sided brick construction and expansive lots. Discover the perfect blend of rural tranquility and urban convenience, as these homes offer easy access to Dothan, Daleville, Enterprise, and Fort Novosel, all within the coveted Wicksburg school system. Step into homes designed with southern charm, featuring spacious floorplans that provide the perfect canvas for your dream lifestyle. The thoughtful design details throughout each residence reflect Stone Martin Builders' commitment to high-quality construction, ensuring enduring value and comfort for years to come. Embrace the heart of your home in the gourmet kitchens, where functionality meets elegance. These culinary spaces are meticulously crafted to be both practical and stylish, ensuring they become the epicenter of your family's daily life. Experience the pinnacle of modern living with integrated smart home connectivity seamlessly woven into the fabric of your home. From climate control to security features, these smart technologies enhance your daily living experience, making your home both efficient and intelligent. Ready to experie...

Prices, plans, dimensions, features, specifications, materials, and availability of homes or communities are subject to change without notice or obligation. Illustrations are artists depictions only and may differ from completed improvements. All prices subject to change without notice. Please contact your sales associate before writing an offer.



**STONE MARTIN
BUILDERS**

FIRST FLOOR

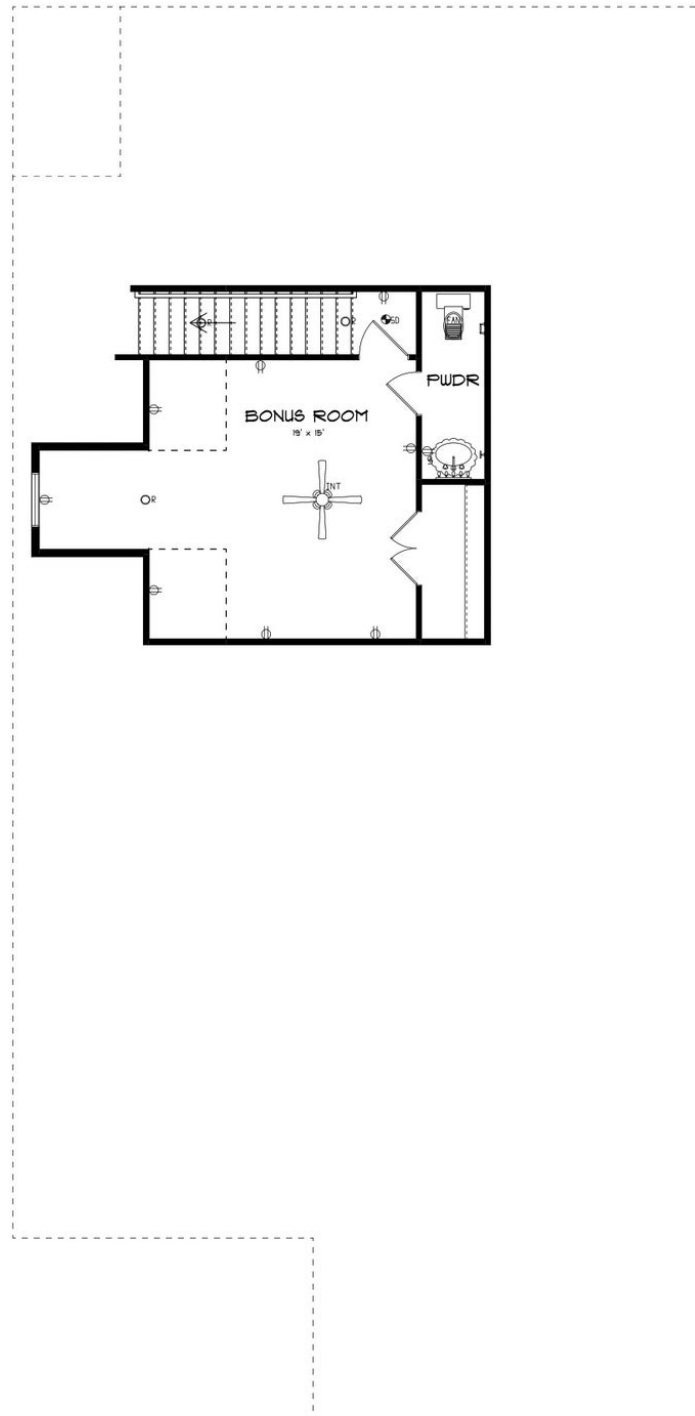


Prices, plans, dimensions, features, specifications, materials, and availability of homes or communities are subject to change without notice or obligation. Illustrations are artists depictions only and may differ from completed improvements. All prices subject to change without notice. Please contact your sales associate before writing an offer.



**STONE MARTIN
BUILDERS**

SECOND FLOOR



Prices, plans, dimensions, features, specifications, materials, and availability of homes or communities are subject to change without notice or obligation. Illustrations are artists depictions only and may differ from completed improvements. All prices subject to change without notice. Please contact your sales associate before writing an offer.