



**STONE MARTIN
BUILDERS**



**763 Sandbed Road
Newton, AL 36352
Cottage Grove**

\$353,809

Plan: Kinkade

SQ FT: 2,383

Beds: 3

Baths: 2.5

Garage: 2

ABOUT THIS HOUSE

Constant appeal and elegant definitions are found in the "Kinkade" plan for those calling for luxury and comfort. A vaulted beamed ceiling in the huge great room accentuates the space along with excellent finishes. The custom fireplace allows an even greater level of amenities while offering sheer enjoyment of an evening fire on those cooler nights. The huge kitchen's attention to custom cabinetry, upgraded stainless steel appliances, and granite counter tops, are sure to enhance cooking and eating experiences. Retire to the primary suite that exudes privacy and use of space and take advantage of the well thought out primary bath with every amenity for speedy starts for the day. From something as simple as a laundry room that does not abut any bedroom or the bonus room located upstairs along with a half bath that can be used as an office space, entertainment room, or even another bedroom; this plan provides plenty of comfort.

ABOUT COTTAGE GROVE

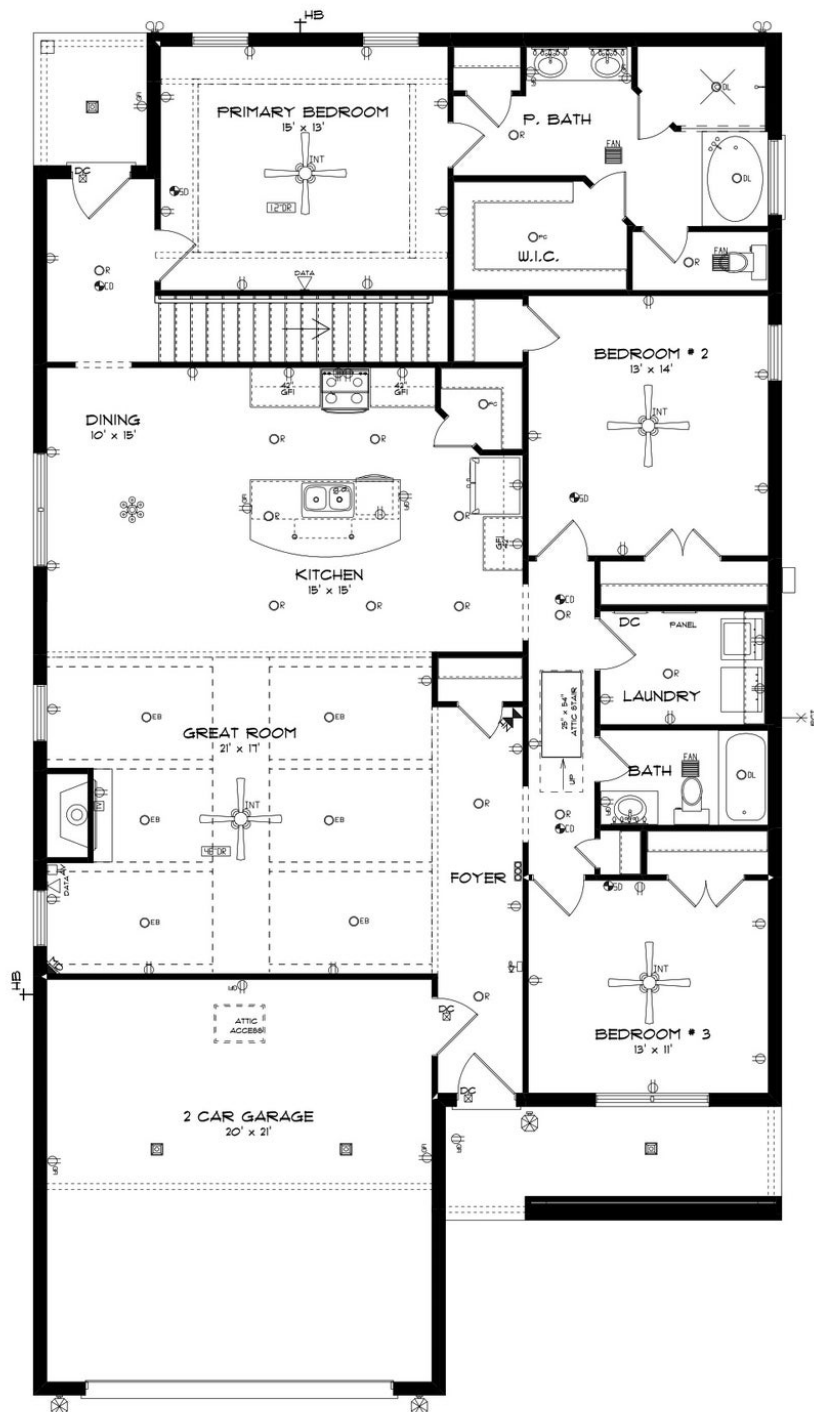
Stone Martin Builders wants to help you Spring into Savings on a new home! Ask a Sales Professional about our special incentives and new home savings! Welcome to the allure of Stone Martin Builders' latest venture in the well-established community of Cottage Grove. Situated west of Dothan, Alabama, this enclave of new construction homes brings a touch of southern charm with its four-sided brick construction and expansive lots. Discover the perfect blend of rural tranquility and urban convenience, as these homes offer easy access to Dothan, Daleville, Enterprise, and Fort Novosel, all within the coveted Wicksburg school system. Step into homes designed with southern charm, featuring spacious floorplans that provide the perfect canvas for your dream lifestyle. The thoughtful design details throughout each residence reflect Stone Martin Builders' commitment to high-quality construction, ensuring enduring value and comfort for years to come. Embrace the heart of your home in the gourmet kitchens, where functionality meets elegance. These culinary spaces are meticulously crafted to be both practical and stylish, ensuring they become the epicenter of your family's daily life. Experience the pinnacle of modern living with integrated smart home connectivity seamlessly woven into the fabric of your home. From climate control to security features, these smart technologies enhance your daily living experience, making your home both efficient and intelligent. Ready to experie...

Prices, plans, dimensions, features, specifications, materials, and availability of homes or communities are subject to change without notice or obligation. Illustrations are artists depictions only and may differ from completed improvements. All prices subject to change without notice. Please contact your sales associate before writing an offer.



**STONE MARTIN
BUILDERS**

FIRST FLOOR

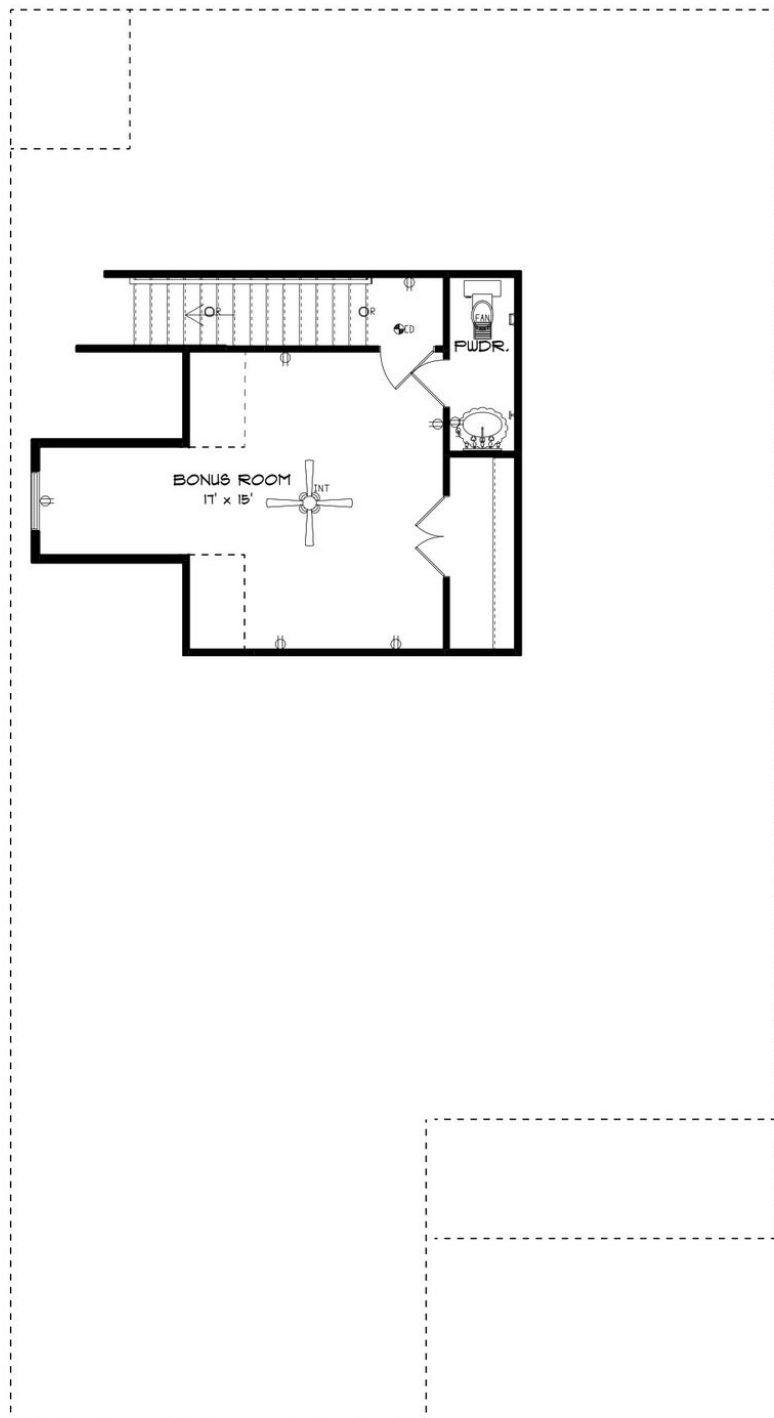


Prices, plans, dimensions, features, specifications, materials, and availability of homes or communities are subject to change without notice or obligation. Illustrations are artists depictions only and may differ from completed improvements. All prices subject to change without notice. Please contact your sales associate before writing an offer.



STONE MARTIN
BUILDERS

SECOND FLOOR



Prices, plans, dimensions, features, specifications, materials, and availability of homes or communities are subject to change without notice or obligation. Illustrations are artists depictions only and may differ from completed improvements. All prices subject to change without notice. Please contact your sales associate before writing an offer.