



**STONE MARTIN  
BUILDERS**



**799 Sandbed Road  
Newton, AL 36352  
Cottage Grove**

**\$357,524**

**Plan: Sherfield**

**SQ FT: 2,372**

**Beds: 3**

**Baths: 3.0**

**Garage: 2**

## ABOUT THIS HOUSE

Designed to fit any lifestyle, the "Sherfield" floor plan features distinct spaces while maintaining an open flow. Open and appealing, the foyer gives a sense of grandeur for establishing a classic look to this home. The fabulous primary bedroom is unusually spacious for a home of this size and will accommodate heavy furniture along with plenty of storage in the walk in closet. A dynamic great room with vaulted beamed ceiling combines style and functionality with its attention to use of living space. Entertain or simply prepare daily evening meals in this cook's kitchen with an abundance of granite counter space. No need to worry about the automobile storage, as this plan comes equipped with a two car garage. Finally two large bedrooms and an upstairs bonus room with a full bathroom attached complete this plan that provides the space and storage for growing families or simply entertaining guests.

## ABOUT COTTAGE GROVE

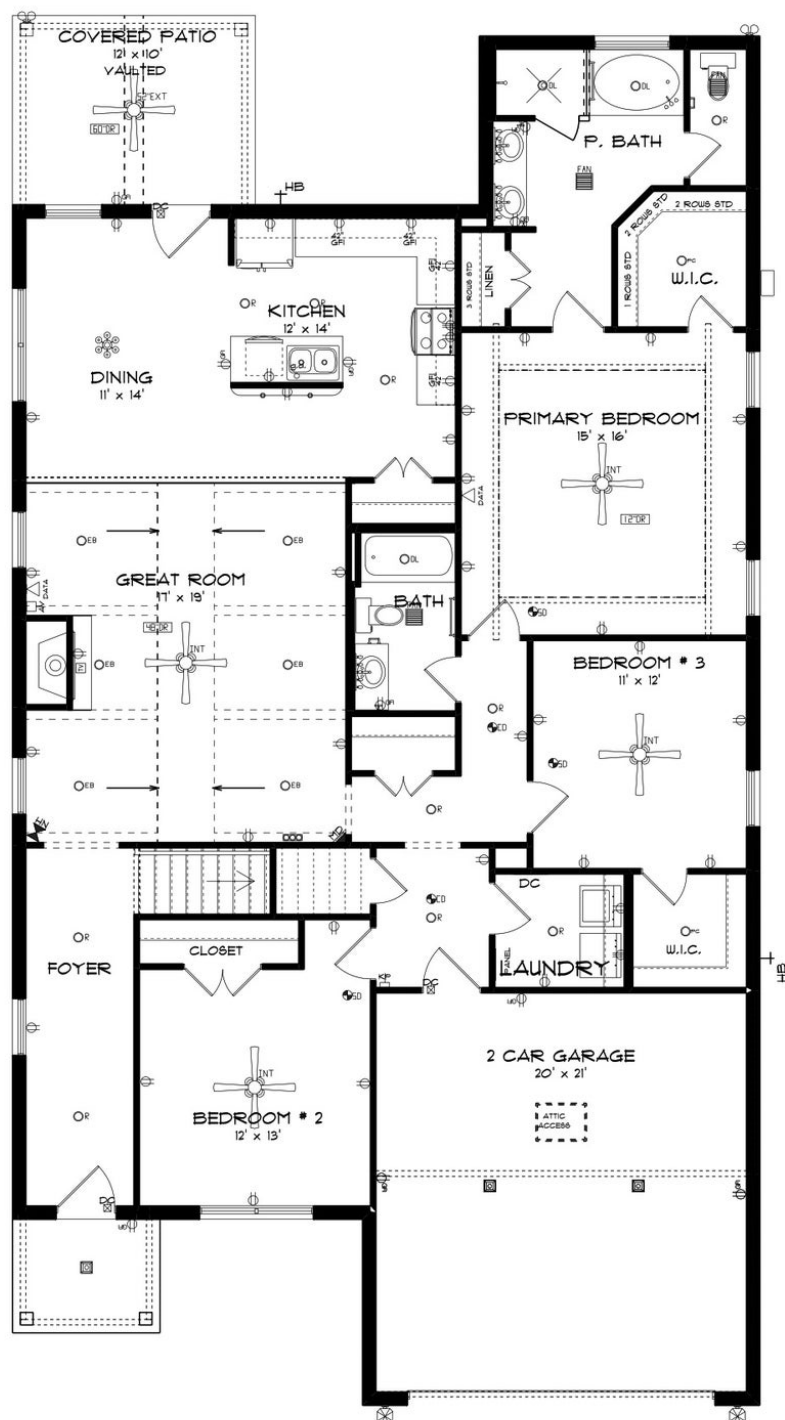
Stone Martin Builders wants to help you Spring into Savings on a new home! Ask a Sales Professional about our special incentives and new home savings! Welcome to the allure of Stone Martin Builders' latest venture in the well-established community of Cottage Grove. Situated west of Dothan, Alabama, this enclave of new construction homes brings a touch of southern charm with its four-sided brick construction and expansive lots. Discover the perfect blend of rural tranquility and urban convenience, as these homes offer easy access to Dothan, Daleville, Enterprise, and Fort Novosel, all within the coveted Wicksburg school system. Step into homes designed with southern charm, featuring spacious floorplans that provide the perfect canvas for your dream lifestyle. The thoughtful design details throughout each residence reflect Stone Martin Builders' commitment to high-quality construction, ensuring enduring value and comfort for years to come. Embrace the heart of your home in the gourmet kitchens, where functionality meets elegance. These culinary spaces are meticulously crafted to be both practical and stylish, ensuring they become the epicenter of your family's daily life. Experience the pinnacle of modern living with integrated smart home connectivity seamlessly woven into the fabric of your home. From climate control to security features, these smart technologies enhance your daily living experience, making your home both efficient and intelligent. Ready to experie...

Prices, plans, dimensions, features, specifications, materials, and availability of homes or communities are subject to change without notice or obligation. Illustrations are artists depictions only and may differ from completed improvements. All prices subject to change without notice. Please contact your sales associate before writing an offer.



**STONE MARTIN  
BUILDERS**

## FIRST FLOOR

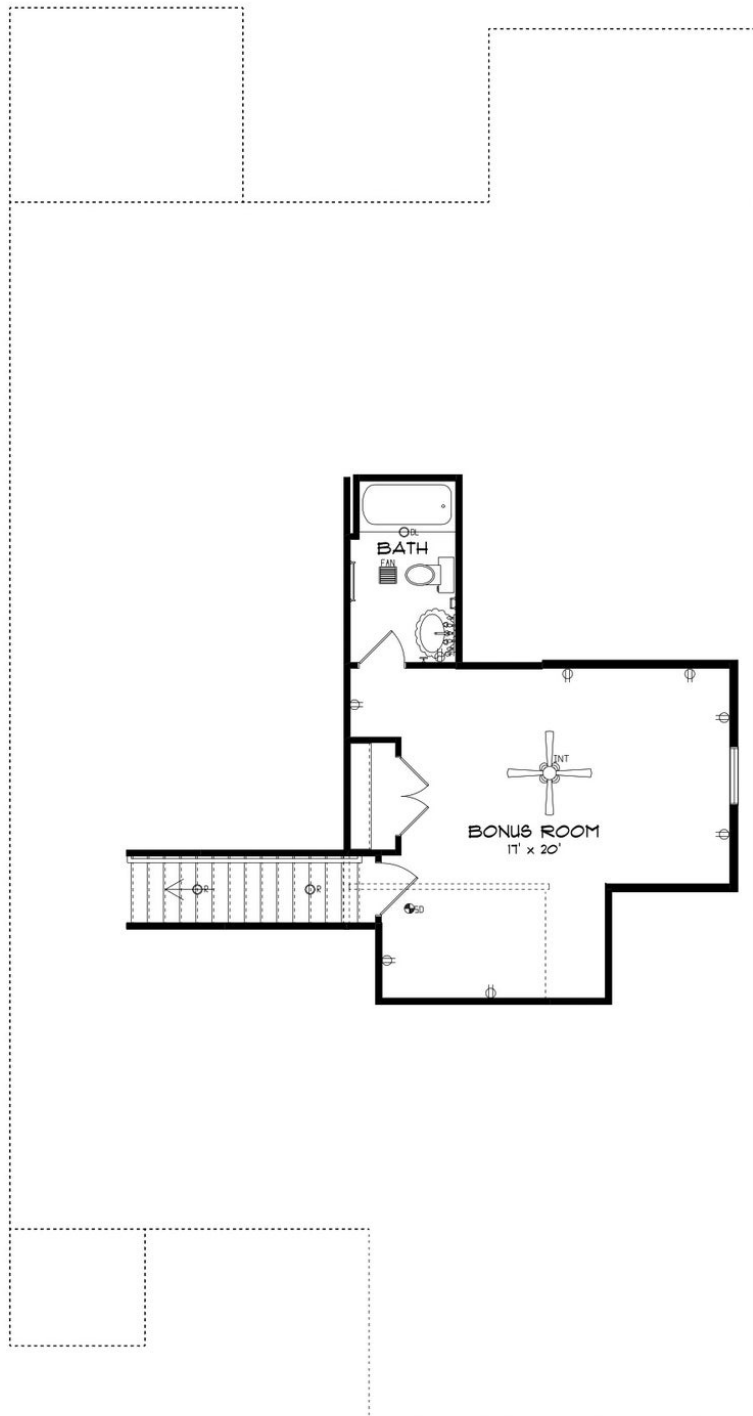


Prices, plans, dimensions, features, specifications, materials, and availability of homes or communities are subject to change without notice or obligation. Illustrations are artists depictions only and may differ from completed improvements. All prices subject to change without notice. Please contact your sales associate before writing an offer.



**STONE MARTIN  
BUILDERS**

## SECOND FLOOR



Prices, plans, dimensions, features, specifications, materials, and availability of homes or communities are subject to change without notice or obligation. Illustrations are artists depictions only and may differ from completed improvements. All prices subject to change without notice. Please contact your sales associate before writing an offer.