



**STONE MARTIN  
BUILDERS**



**931 Sandbed Road  
Newton, AL 36350  
Cottage Grove**

**Plan:** Lenox  
**SQ FT:** 2,192  
**Beds:** 4  
**Baths:** 2.0  
**Garage:** 2

## ABOUT THIS HOUSE

The "Lenox" is a one story open floorplan with ample possibilities. This 4 bedroom 2 bath plan begins with a refined foyer entry way, which opens into a roomy living area with a vaulted ceiling. Next experience the open kitchen with large center island and adjoining dining room. The kitchen offers built in appliances, granite countertops and an expanded pantry. The primary quarters provide a large bedroom and walk in closet as well as a luxurious bathroom complete with a double granite vanity, garden/soaking tub, and tiled shower with glass door. This layout truly is a must see!

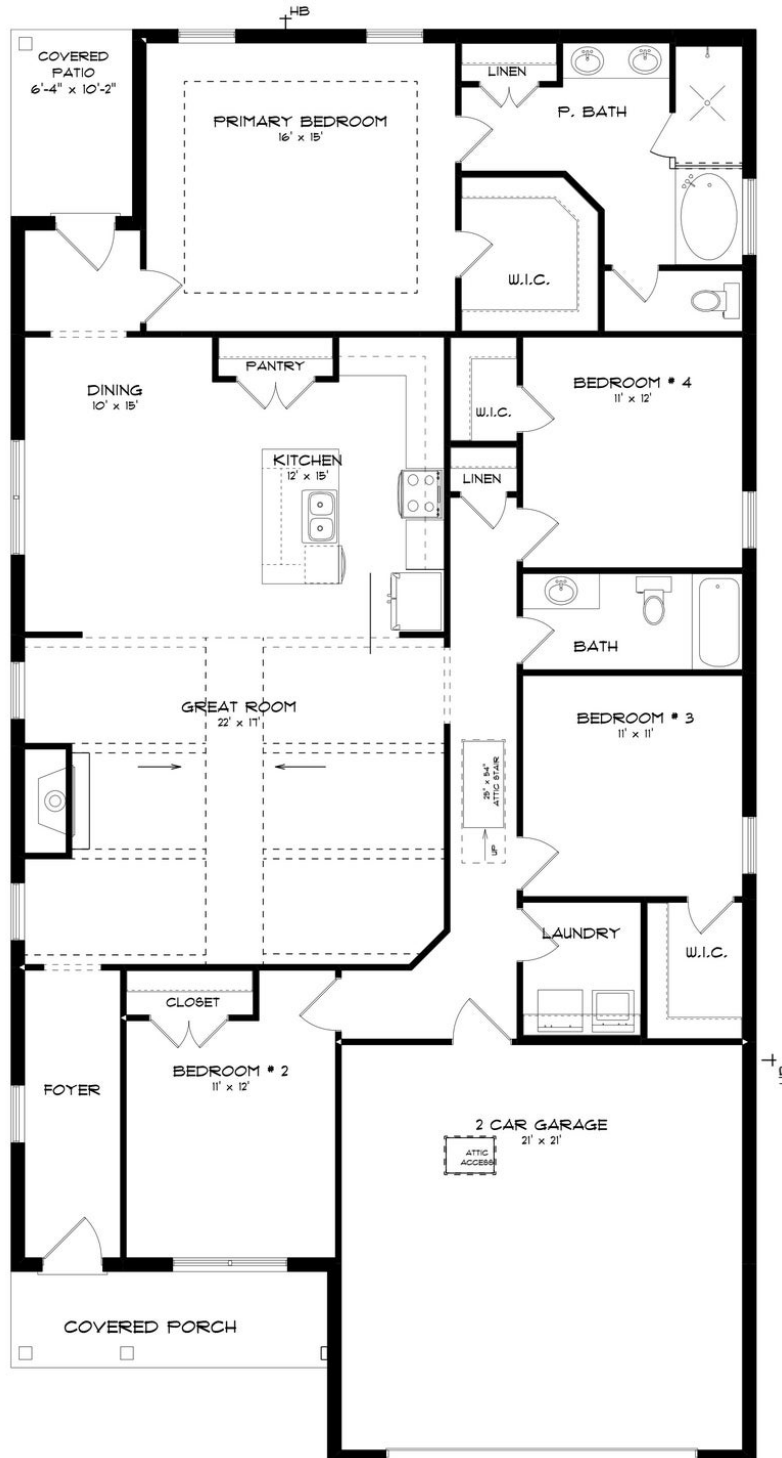
## ABOUT COTTAGE GROVE

Stone Martin Builders wants to help you get into the game of homeownership! Ask a Sales Professional about our special incentives and new home savings! Welcome to the allure of Stone Martin Builders' latest venture in the well-established community of Cottage Grove. Situated west of Dothan, Alabama, this enclave of new construction homes brings a touch of southern charm with its four-sided brick construction and expansive lots. Discover the perfect blend of rural tranquility and urban convenience, as these homes offer easy access to Dothan, Daleville, Enterprise, and Fort Novosel, all within the coveted Wicksburg school system. Step into homes designed with southern charm, featuring spacious floorplans that provide the perfect canvas for your dream lifestyle. The thoughtful design details throughout each residence reflect Stone Martin Builders' commitment to high-quality construction, ensuring enduring value and comfort for years to come. Embrace the heart of your home in the gourmet kitchens, where functionality meets elegance. These culinary spaces are meticulously crafted to be both practical and stylish, ensuring they become the epicenter of your family's daily life. Experience the pinnacle of modern living with integrated smart home connectivity seamlessly woven into the fabric of your home. From climate control to security features, these smart technologies enhance your daily living experience, making your home both efficient and intelligent. Ready to experience t...

Prices, plans, dimensions, features, specifications, materials, and availability of homes or communities are subject to change without notice or obligation. Illustrations are artists depictions only and may differ from completed improvements. All prices subject to change without notice. Please contact your sales associate before writing an offer.



## ELEVATION D



Prices, plans, dimensions, features, specifications, materials, and availability of homes or communities are subject to change without notice or obligation. Illustrations are artists depictions only and may differ from completed improvements. All prices subject to change without notice. Please contact your sales associate before writing an offer.