



**STONE MARTIN  
BUILDERS**



**2082 Superior Drive**

**Opelika, AL 36804**

**Laurel Lakes**

**\$327,799**

**Plan:** Thrive Archer

**SQ FT:** 1,833

**Beds:** 3

**Baths:** 2.0

**Garage:** 2

## ABOUT THIS HOUSE

Step into the Archer – where elegance meets practicality in a thoughtfully designed floorplan. Upon entering, an elegant foyer beckons you to explore further, guiding you to the very heart of the Archer. Here, you'll discover an inviting, open expanse that effortlessly unites the dining area and the great room, all seamlessly connected to the central kitchen. In the kitchen, a striking granite-topped island takes center stage, offering both a stylish focal point and a practical workspace. The large corner pantry provides ample storage for all your culinary needs, ensuring you have everything at your fingertips. The primary bedroom, located at the rear of the home, offers a private retreat and features a generously sized closet for all your wardrobe essentials, and the primary bath boasts dual sink vanities, adding convenience to your daily routine. Two additional secondary bedrooms provide flexibility for family, guests, or even a home office, ensuring you have plenty of space to make this home uniquely yours. Step outside to the spacious covered porch, where you can enjoy outdoor living and entertain guests in style. The Archer floorplan is a perfect blend of elegance and functionality, providing a space where you can create lasting memories and find comfort in every corner.

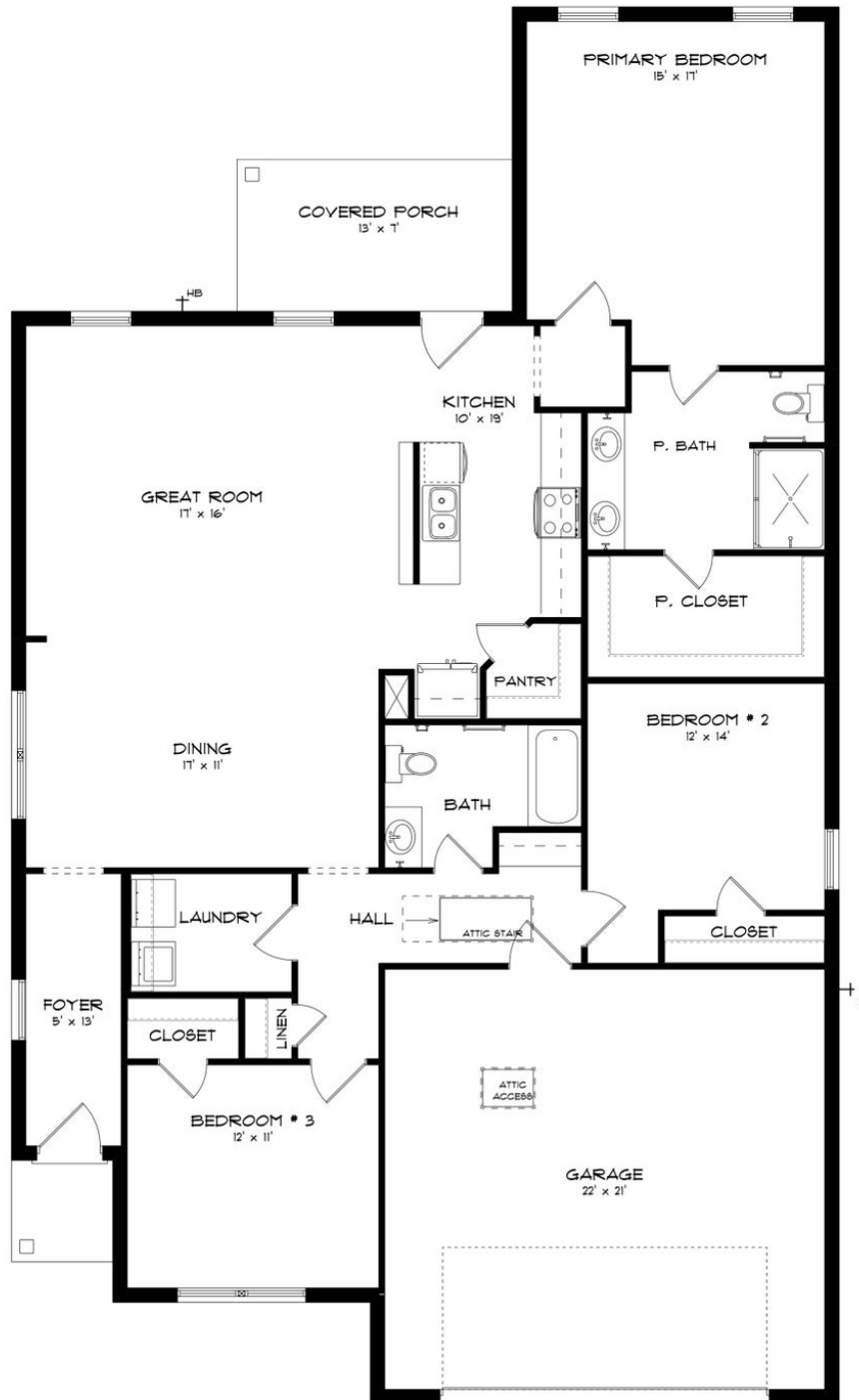
## ABOUT LAUREL LAKES

Welcome to Laurel Lakes, a place where serenity, convenience, and a strong sense of community seamlessly converge. Our meticulously planned community is on the brink of unveiling a rich array of top-tier amenities: a pristine swimming pool for relaxation, a clubhouse designed for gatherings, and expansive open spaces catering to all ages. Nestled at the intersection of N. Uniroyal Road and Ridge Road in Opelika, Laurel Lakes provides effortless access to the bustling I-85 and Highway 280, ensuring convenient connectivity to nearby destinations and conveniences. Enjoy spacious floorplans crafted with meticulous attention to detail by Stone Martin Builders, renowned for our commitment to high-quality construction, energy efficiency, and integrated smart home connectivity. At Laurel Lakes, we're not just creating a community; we're crafting a lifestyle tailored to your desires. Join us in this welcoming haven, where every day feels like a fresh adventure, and where neighbors become friends. Ready to experience the Stone Martin Builders difference? Schedule a visit to Laurel Lakes and meet with our knowledgeable Sales Professionals. Explore available homes and embark on the journey to find your personal oasis in Opelika, AL.

Prices, plans, dimensions, features, specifications, materials, and availability of homes or communities are subject to change without notice or obligation. Illustrations are artists depictions only and may differ from completed improvements. All prices subject to change without notice. Please contact your sales associate before writing an offer.



## ELEVATION B



Prices, plans, dimensions, features, specifications, materials, and availability of homes or communities are subject to change without notice or obligation. Illustrations are artists depictions only and may differ from completed improvements. All prices subject to change without notice. Please contact your sales associate before writing an offer.