



538 Towne Lake Parkway

Opelika, AL 36804

The Cove at Towne Lake

\$305,620

Plan:Walton

SQ FT:2,513

Beds:4

Baths:2.0

Garage:2

ABOUT THIS HOUSE

A remarkable one-story layout, the "Walton" is a spacious 4-bedroom plan designed for living. Beautiful foyer area with adjacent dining room leads into an open kitchen with a large granite island, granite countertops and stainless steel appliances. This kitchen also features a walk in pantry and offers a large breakfast area and great room. The master suite has a roomy design including a sitting area perfect for lounging. The master bath is equipped with double granite vanities, garden/soaking tub, separate tiled shower with a glass door, and a spacious walk in closet. This quaint home is perfect for a charming family lifestyle.

...Read More Online

ABOUT THE COVE AT TOWNE LAKE

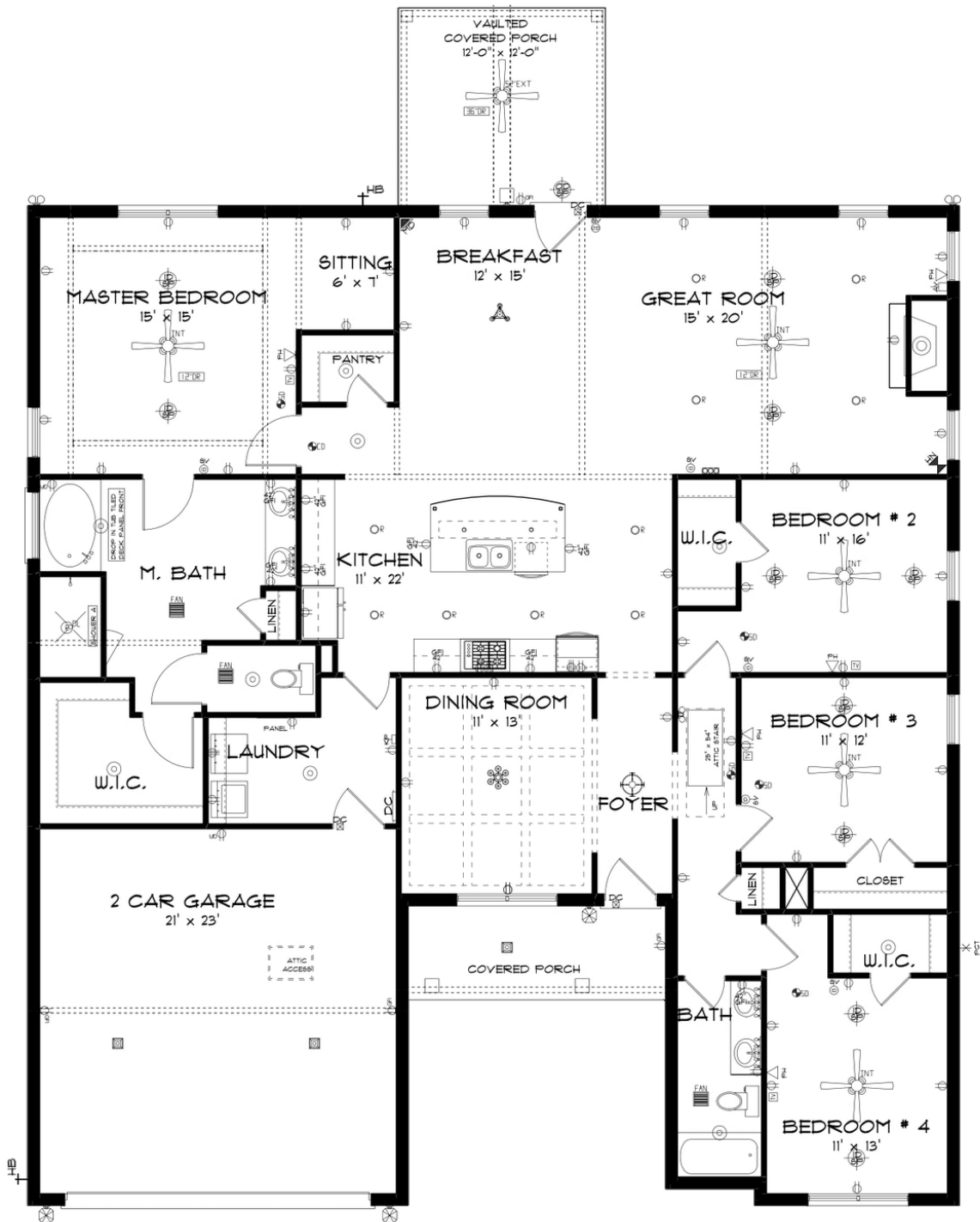
An extension of a wonderfully established subdivision. Easy access to Highway 280 and I-85. Great proximity for anyone who commutes to Columbus, Montgomery, Atlanta, Tuskegee or in between. Affordable pricing and wonderful lot sizes with good privacy. Pool and playground. Homes starting at 2200 square feet up to 3100 square feet.

...Read More Online

Prices, plans, dimensions, features, specifications, materials, and availability of homes or communities are subject to change without notice or obligation. Illustrations are artists depictions only and may differ from completed improvements. All prices subject to change without notice. Please contact your sales associate before writing an offer.



FIRST FLOOR



Prices, plans, dimensions, features, specifications, materials, and availability of homes or communities are subject to change without notice or obligation. Illustrations are artists depictions only and may differ from completed improvements. All prices subject to change without notice. Please contact your sales associate before writing an offer.