



**STONE MARTIN
BUILDERS**



**7515 Shelby Maples Drive
SE**

**Owens Cross Roads, AL
35763**

Nature's Walk On The Flint

Plan: St James II

SQ FT: 3,135

Beds: 4

Baths: 4.0

Garage: 3

ABOUT THIS HOUSE

Introducing the St. James II floorplan - a heavenly abode designed for modern living. Step into the grand foyer leading to a stunning kitchen with granite countertops and an island, seamlessly connecting to the dining area. The expansive great room features hardwood floors, a cozy fireplace, and vaulted ceilings, perfect for gatherings. Retreat to the spacious covered back patio for relaxation. With a 3-car garage providing ample storage, this 4-bed, 4-bath plan offers versatility and charm, ideal for multi-generational living. Discover the epitome of comfort and luxury in the St. James II.

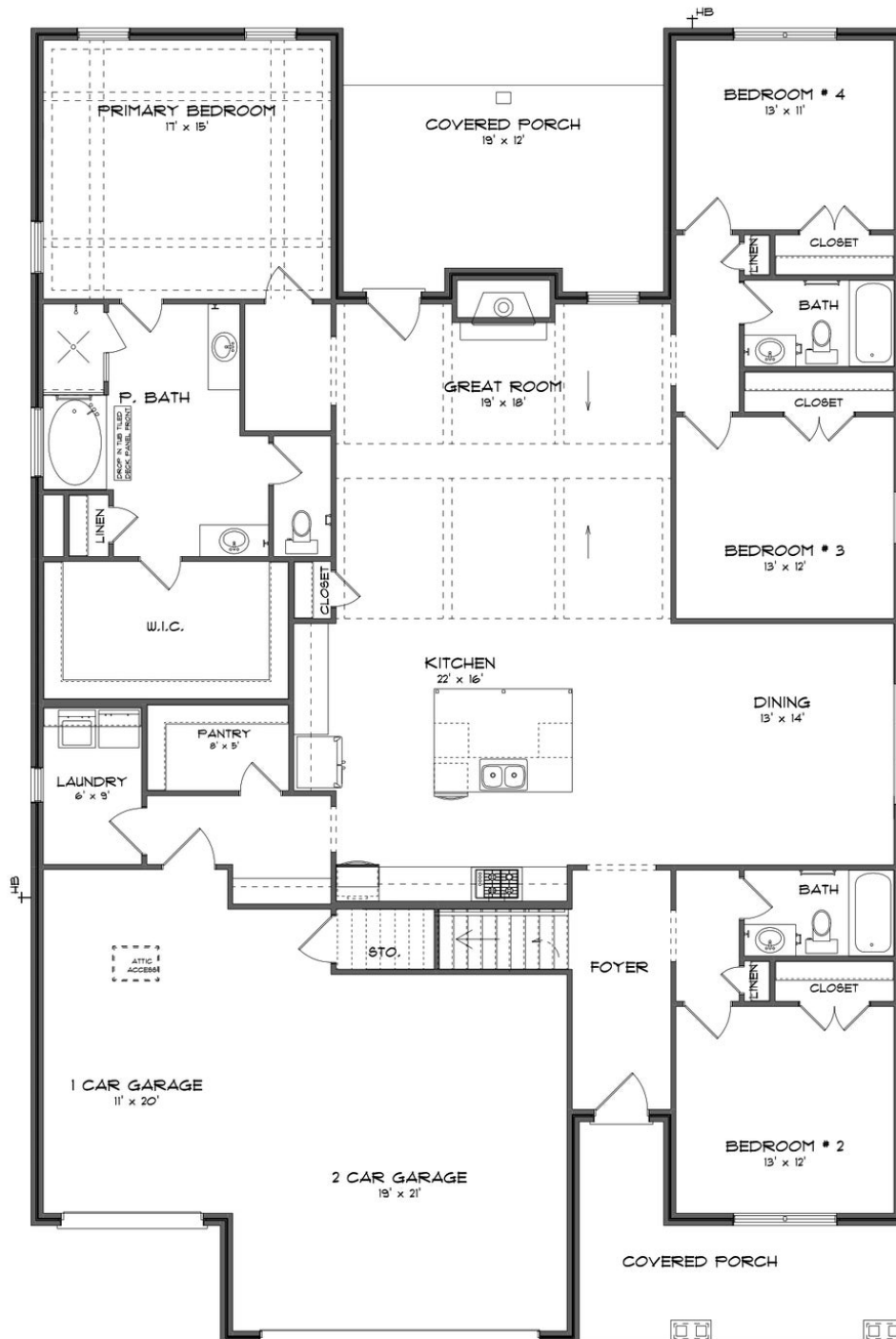
ABOUT NATURE'S WALK ON THE FLINT

Nestled along the picturesque Flint River, Nature's Walk on the Flint invites you to immerse yourself in the tranquility of this premier community, where nature meets luxury. For those who revel in the outdoors, Nature's Walk on the Flint is a haven. Surrounded by nature trails, and in proximity to the Robert Trent Jones golf course, the community offers a gateway to adventure. Discover the Goldsmith Schiffman Wildlife Sanctuary, JD & Annie S. Hays Nature Preserve, Madison County Nature Trail, and the Aldridge Creek Greenway - all just moments away. Our homes, ranging from 2,400 to 4,700 square feet, are crafted for those who seek excellence. Experience quality construction that stands the test of time, paired with integrated smart home technology for modern living. From gourmet kitchens to designer-selected finishes, every detail is meticulously designed to elevate your lifestyle. Enjoy the proximity to Downtown Huntsville, ensuring that cultural and entertainment delights are within easy reach. Whether it's a leisurely stroll along nature trails or a night out in the city, this community offers the perfect balance. Ready to experience the Stone Martin Builders difference? Schedule a visit to Nature's Walk on the Flint and meet with our knowledgeable Sales Professionals. Explore available homes and embark on the journey to find your personal oasis in Owens Cross Roads, AL.

Prices, plans, dimensions, features, specifications, materials, and availability of homes or communities are subject to change without notice or obligation. Illustrations are artists depictions only and may differ from completed improvements. All prices subject to change without notice. Please contact your sales associate before writing an offer.



FIRST FLOOR (F)



Prices, plans, dimensions, features, specifications, materials, and availability of homes or communities are subject to change without notice or obligation. Illustrations are artists depictions only and may differ from completed improvements. All prices subject to change without notice. Please contact your sales associate before writing an offer.



SECOND FLOOR (F)

