



**STONE MARTIN
BUILDERS**



**7635 Shaun Leslie Circle
Owens Cross Roads, AL
35763**

Nature's Walk On The Flint

\$488,772

Plan: Shackleford

SQ FT: 2,402

Beds: 4

Baths: 3.5

Garage: 3

ABOUT THIS HOUSE

"Shackleford" is fabulously designed with 4 bedrooms and 3.5 baths created for comfortable, spacious living. The focus of the design is the great room with vaulted ceilings and a fireplace, the central hub of the home. Tucked in the back, the large primary bedroom is an assured peaceful retreat. Three additional bedrooms complete this floor plan, all with copious closet space with two full bathrooms. The rear covered patio provides ample shade and a peaceful setting. The heart of the kitchen, the granite island, provides a fantastic space for entertainment and cookery. The kitchen opens to the dining, creating a flawless space for hosting. This well laid floor plan can accommodate the space needed for a multi-generational housing because of the in-suite sleeping area for parents or children moving back home. The plan is rounded out with ample storage and a 3-car garage.

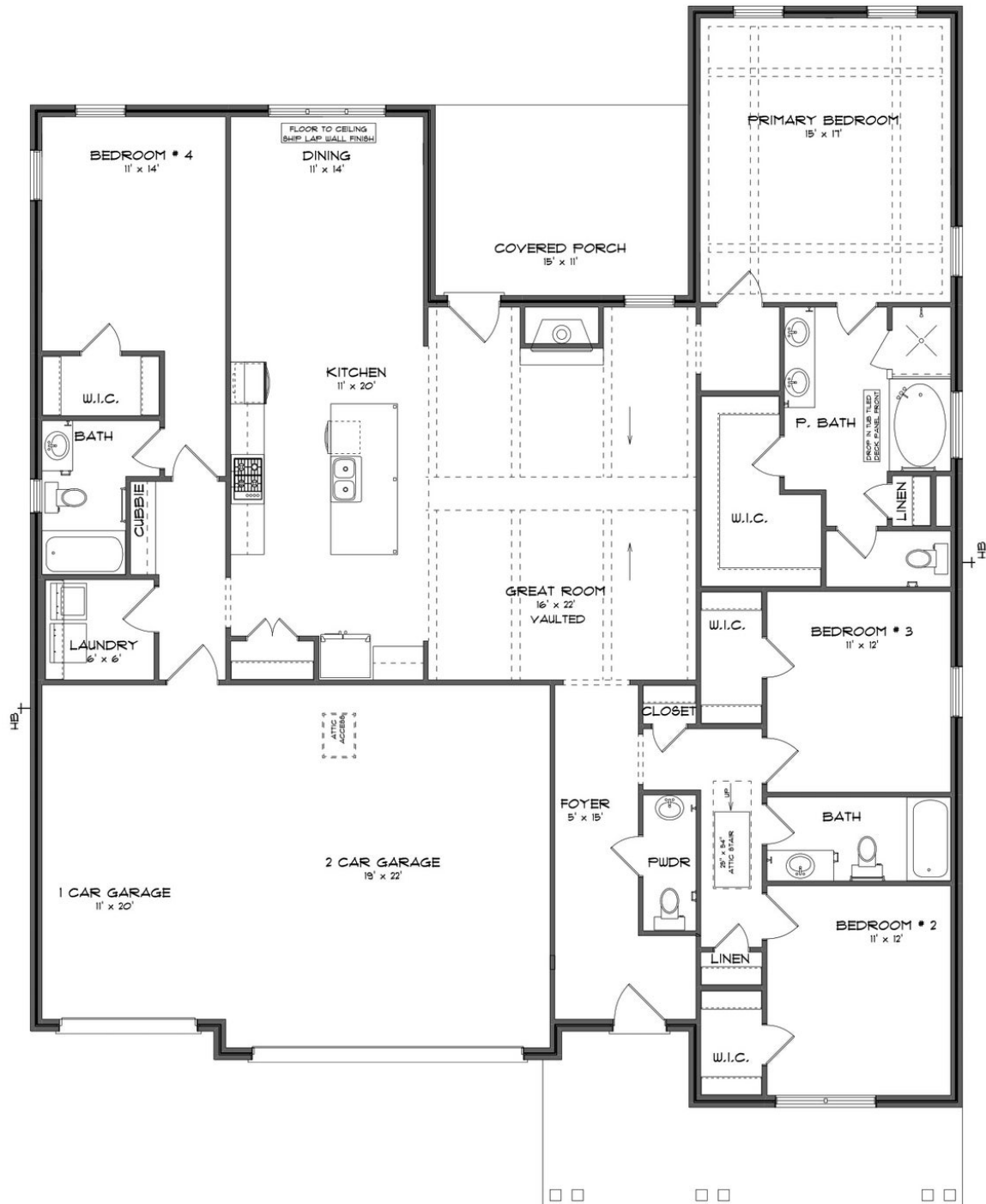
ABOUT NATURE'S WALK ON THE FLINT

Stone Martin Builders wants to help you Splash into Savings on a new home! Ask a Sales Professional about our special incentives and new home savings! Nestled along the picturesque Flint River, Nature's Walk on the Flint invites you to immerse yourself in the tranquility of this premier community, where nature meets luxury. For those who revel in the outdoors, Nature's Walk on the Flint is a haven. Surrounded by nature trails, and in proximity to the Robert Trent Jones golf course, the community offers a gateway to adventure. Discover the Goldsmith Schiffman Wildlife Sanctuary, JD & Annie S. Hays Nature Preserve, Madison County Nature Trail, and the Aldridge Creek Greenway – all just moments away. Our homes, ranging from 2,400 to 4,700 square feet, are crafted for those who seek excellence. Experience quality construction that stands the test of time, paired with integrated smart home technology for modern living. From gourmet kitchens to designer-selected finishes, every detail is meticulously designed to elevate your lifestyle. Enjoy the proximity to Downtown Huntsville, ensuring that cultural and entertainment delights are within easy reach. Whether it's a leisurely stroll along nature trails or a night out in the city, this community offers the perfect balance. Ready to experience the Stone Martin Builders difference? Schedule a visit to Nature's Walk on the Flint and meet with our knowledgeable Sales Professionals. Explore available homes and embark on the ...

Prices, plans, dimensions, features, specifications, materials, and availability of homes or communities are subject to change without notice or obligation. Illustrations are artists depictions only and may differ from completed improvements. All prices subject to change without notice. Please contact your sales associate before writing an offer.



ELEVATION F



Prices, plans, dimensions, features, specifications, materials, and availability of homes or communities are subject to change without notice or obligation. Illustrations are artists depictions only and may differ from completed improvements. All prices subject to change without notice. Please contact your sales associate before writing an offer.