



**STONE MARTIN  
BUILDERS**



**213 Royal Oaks Drive  
Pike Road, AL 36064  
Abbingdon**

**\$355,000**

**Plan:** Greystone

**SQ FT:** 2,367

**Beds:** 3

**Baths:** 3.0

**Garage:** 2

## ABOUT THIS HOUSE

Uniquely designed and carefully crafted, the "Greystone" Townhome includes 3 beds, 3 baths and 2,367 square feet. The covered porch leads directly into the foyer and open dining room. The kitchen boasts a large island, ample counter space, and a pantry. The kitchen leads directly into the grandiose great room, decorated with coffered ceilings and a center fireplace. The primary suite features a tray ceiling, walk-in closet, double vanities, separate shower, and a garden/soaking tub. The "Greystone" is complete with one other bedroom downstairs with a walk-in closet and a full bathroom. This plan includes a bonus room and additional bedroom upstairs. The "Greystone" is an interior unit.

## ABOUT ABBINGTON

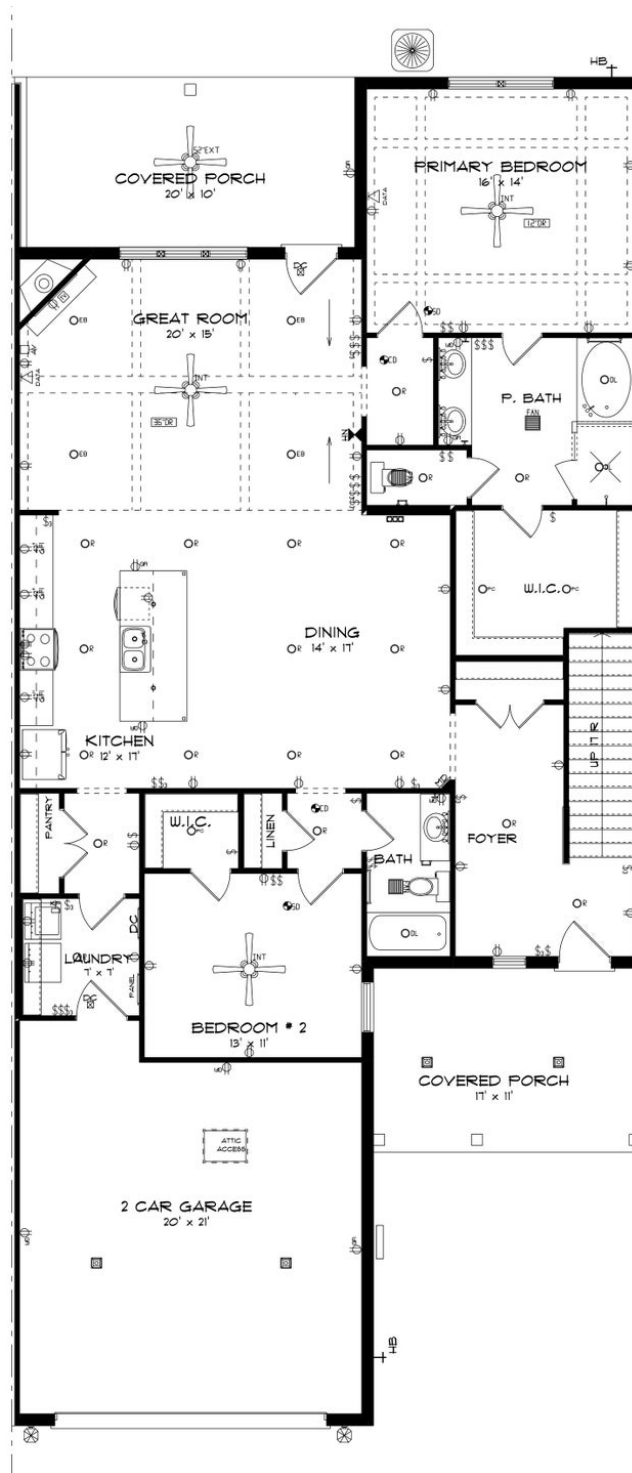
Stone Martin Builders wants to help you Spring into Savings on a new home! Ask a Sales Professional about our special incentives and new home savings! Welcome to Abbingdon, Pike Road's premier master-planned community by Stone Martin Builders. This vibrant community offers an array of new construction single-family residences and townhomes nestled in the picturesque surroundings of Pike Road, AL. Situated amidst the tranquil countryside, Abbingdon provides a serene retreat while remaining conveniently close to essential amenities. Just a short drive from I-85, residents enjoy easy access to urban conveniences like The Shoppes at Eastchase, Publix, Costco, Starbucks, Target, and many delicious dining options. Zoned for the esteemed Pike Road School System and near the Pike Road Nature Trail, Abbingdon offers top-tier education options and ample opportunities for outdoor recreation. Residents will also delight in the community's array of amenities, including a sparkling community pool, inviting playground, cozy fire pit, and charming gazebo—perfect for forging connections with neighbors and fostering a strong sense of community. At Abbingdon, you'll discover meticulously crafted homes renowned for their spacious floorplans, thoughtful design details, and gourmet kitchens. Each home boasts integrated smart home connectivity and high-quality construction, ensuring modern comfort, convenience, and energy efficiency. Ready to experience the Stone Martin Builders difference? Sche...

Prices, plans, dimensions, features, specifications, materials, and availability of homes or communities are subject to change without notice or obligation. Illustrations are artists depictions only and may differ from completed improvements. All prices subject to change without notice. Please contact your sales associate before writing an offer.



**STONE MARTIN  
BUILDERS**

## FIRST FLOOR

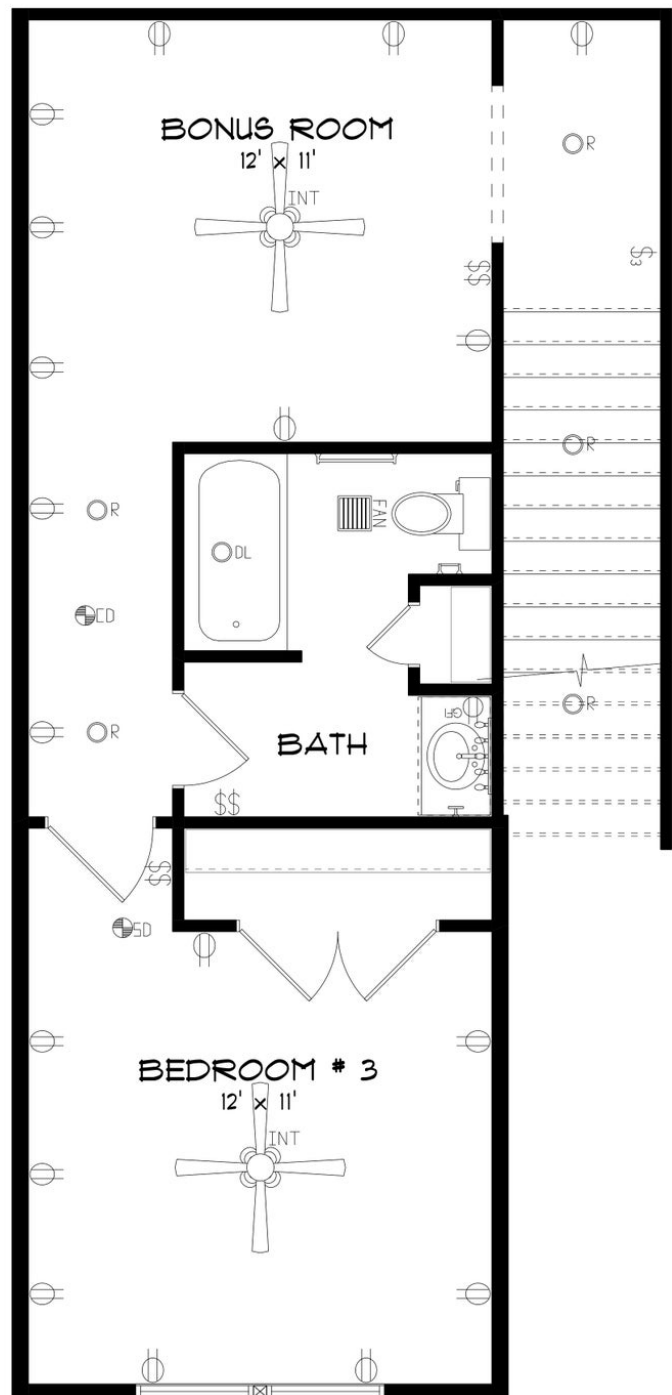


Prices, plans, dimensions, features, specifications, materials, and availability of homes or communities are subject to change without notice or obligation. Illustrations are artists depictions only and may differ from completed improvements. All prices subject to change without notice. Please contact your sales associate before writing an offer.



**STONE MARTIN  
BUILDERS**

## SECOND FLOOR



Prices, plans, dimensions, features, specifications, materials, and availability of homes or communities are subject to change without notice or obligation. Illustrations are artists depictions only and may differ from completed improvements. All prices subject to change without notice. Please contact your sales associate before writing an offer.